

## Product datasheet for **TA323229**

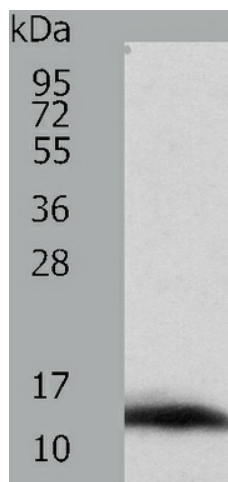
### ACYP1 Rabbit Polyclonal Antibody

#### Product data:

Product Type:	Primary Antibodies
Applications:	WB
Recommended Dilution:	ELISA: 1:1000-2000, WB: 1:200-1000
Reactivity:	Human, Mouse, Rat
Host:	Rabbit
Isotype:	IgG
Clonality:	Polyclonal
Immunogen:	Fusion protein corresponding to a region derived from 2-99 amino acids of human acylphosphatase 1, erythrocyte (common) type
Formulation:	PBS pH7.3, 0.05% NaN <sub>3</sub> , 50% glycerol
Concentration:	lot specific
Purification:	Antigen affinity purification
Conjugation:	Unconjugated
Storage:	Store at -20°C as received.
Stability:	Stable for 12 months from date of receipt.
Predicted Protein Size:	11 kDa
Gene Name:	acylphosphatase 1
Database Link:	<a href="#">NP_001098</a> <a href="#">Entrez Gene 66204 Mouse</a> <a href="#">Entrez Gene 299203 Rat</a> <a href="#">Entrez Gene 97 Human</a> <a href="#">P07311</a>
Background:	Acylphosphatase is a small cytosolic enzyme that catalyzes the hydrolysis of the carboxyl-phosphate bond of acylphosphates. Two isoenzymes have been isolated, called muscle acylphosphatase and erythrocyte acylphosphatase, on the basis of their tissue localization. This gene encodes the erythrocyte acylphosphatase isoenzyme. Alternatively spliced transcript variants that encode different proteins were identified through data analysis.?
Synonyms:	ACYPE
Protein Pathways:	Pyruvate metabolism



[View online »](#)

**Product images:**

Predicted band size: 11 kDa. Positive control: Jurkat cell lysate. Recommended dilution: 1/200-1000. (Gel: 12%SDS-PAGE Lysate: 40 ug per lane Primary antibody: 1/300 dilution Secondary antibody: Goat anti Rabbit IgG - H&L (HRP) at 1/10000 dilution Exposure time: 10 minutes)