

## Product datasheet for **TA323228**

### Acrosin (ACR) Rabbit Polyclonal Antibody

#### Product data:

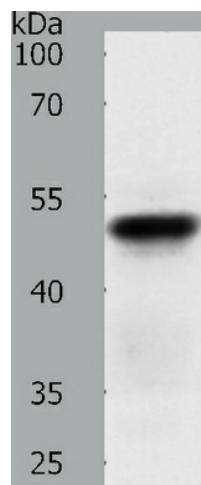
Product Type:	Primary Antibodies
Applications:	IHC, WB
Recommended Dilution:	ELISA: 1:1000-2000, WB: 1:200-1000
Reactivity:	Human, Mouse, Rat
Host:	Rabbit
Isotype:	IgG
Clonality:	Polyclonal
Immunogen:	Synthetic peptide corresponding to a region derived from 407-421 amino acids of human acrosin
Formulation:	PBS pH7.3, 0.05% NaN <sub>3</sub> , 50% glycerol
Concentration:	lot specific
Purification:	Antigen affinity purification
Conjugation:	Unconjugated
Storage:	Store at -20°C as received.
Stability:	Stable for 12 months from date of receipt.
Predicted Protein Size:	46 kDa
Gene Name:	acrosin
Database Link:	<a href="#">NP_001088</a> <a href="#">Entrez Gene 11434 MouseEntrez Gene 24163 RatEntrez Gene 49 Human P10323</a>
Background:	Acrosin is the major proteinase present in the acrosome of mature spermatozoa. It is a typical serine proteinase with trypsin-like specificity. It is stored in the acrosome in its precursor form, proacrosin. The active enzyme functions in the lysis of the zona pellucida, thus facilitating penetration of the sperm through the innermost glycoprotein layers of the ovum. The mRNA for proacrosin is synthesized only in the postmeiotic stages of spermatogenesis. In humans proacrosin first appears in the haploid spermatids.
Synonyms:	acrosin; preproacrosin; proacrosin



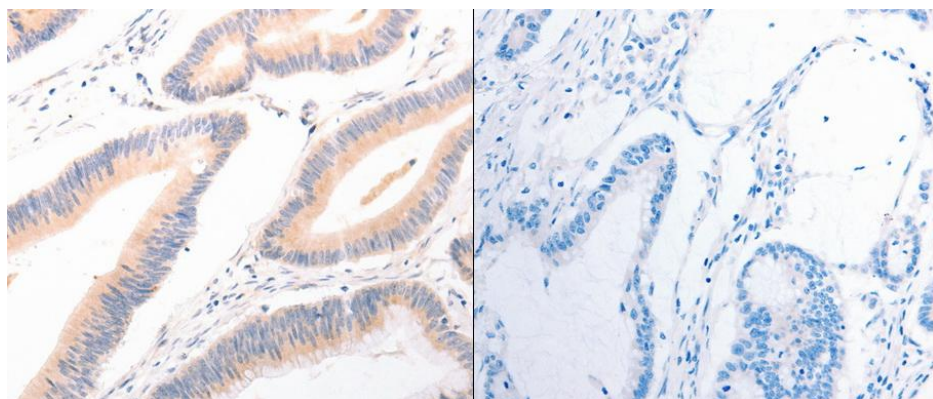
[View online »](#)

Protein Families: Druggable Genome, Protease

### Product images:



Predicted band size: 46 kDa. Positive control: A549 cell lysate. Recommended dilution: 1/200-1000. (Gel: 12%SDS-PAGE Lysate: 50 ug per lane Primary antibody: 1/200 dilution Secondary antibody: Goat anti Rabbit IgG - H&L (HRP) at 1/10000 dilution Exposure time: 40 seconds)



Predicted cell location: Cytoplasm. Positive control: Human colon cancer tissue. Recommended dilution: 1/15-50 The image on the left is immunohistochemistry of paraffin-embedded Human colon cancer using ACR antibody at dilution 1/20, on the right is treated with the synthetic peptide. (Original magnification: x 200)