

## Product datasheet for **TA323225**

### alpha Adducin (ADD1) Rabbit Polyclonal Antibody

#### Product data:

Product Type:	Primary Antibodies
Applications:	IHC
Recommended Dilution:	IHC: 50-200 Positive control: Human cervical cancer Predicted cell location: Cytoplasm
Reactivity:	Human, Mouse, Rat
Host:	Rabbit
Isotype:	IgG
Clonality:	Polyclonal
Immunogen:	Full length fusion protein
Formulation:	PBS pH7.3, 0.05% NaN <sub>3</sub> , 50% glycerol
Concentration:	lot specific
Purification:	Antigen affinity purification
Conjugation:	Unconjugated
Storage:	Store at -20°C as received.
Stability:	Stable for 12 months from date of receipt.
Gene Name:	adducin 1
Database Link:	<a href="#">NP_001110</a> <a href="#">Entrez Gene 11518 Mouse</a> <a href="#">Entrez Gene 24170 Rat</a> <a href="#">Entrez Gene 118 Human</a> <a href="#">P35611</a>



[View online »](#)

**Background:**

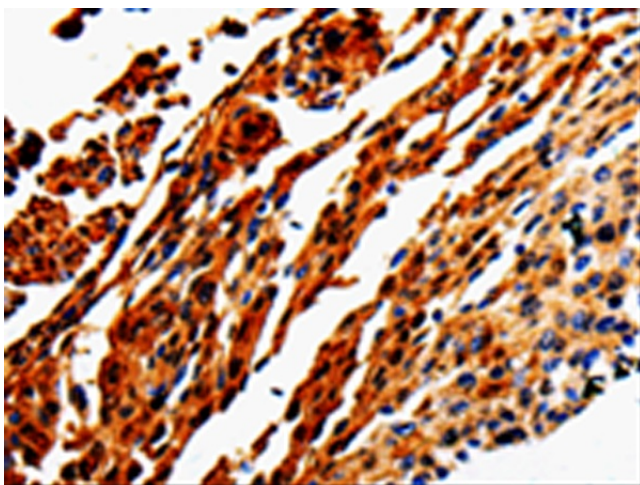
Adducins are a family of cytoskeleton proteins encoded by three genes (alpha; beta; gamma). Adducin is a heterodimeric protein that consists of related subunits; which are produced from distinct genes but share a similar structure. Alpha- and beta-adducin include a protease-resistant N-terminal region and a protease-sensitive; hydrophilic C-terminal region. Alpha- and gamma-adducins are ubiquitously expressed. In contrast; beta-adducin is expressed at high levels in brain and hematopoietic tissues. Adducin binds with high affinity to Ca(2+)/calmodulin and is a substrate for protein kinases A and C. Alternative splicing results in multiple variants encoding distinct isoforms; however; not all variants have been fully described.

**Synonyms:**

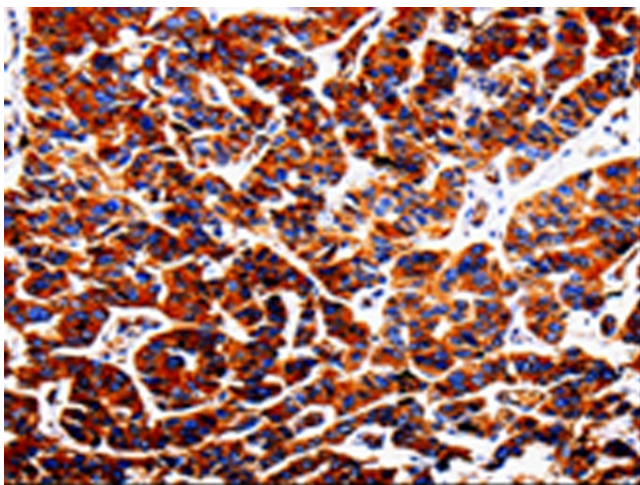
ADDA

**Protein Families:**

Druggable Genome

**Product images:**

Immunohistochemistry of paraffin-embedded Human cervical cancer tissue using TA323225 (ADD1 Antibody) at dilution 1/50. (Original magnification: ×200)



Immunohistochemistry of paraffin-embedded Human lung cancer tissue using TA323225 (ADD1 Antibody) at dilution 1/50. (Original magnification: ×200)