

Product datasheet for **TA323222S**

AP1B1 Rabbit Polyclonal Antibody

Product data:

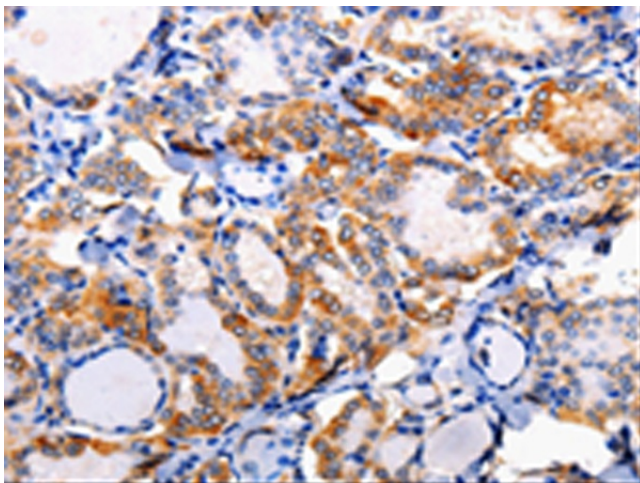
Product Type:	Primary Antibodies
Applications:	IHC
Recommended Dilution:	IHC: 50-200 Positive control: Human thyroid cancer Predicted cell location: Cytoplasm
Reactivity:	Human, Mouse, Rat
Host:	Rabbit
Isotype:	IgG
Clonality:	Polyclonal
Immunogen:	Synthetic peptide corresponding to a region derived from 18-30 amino acids of Human Adapter-related protein complex 1 subunit beta-1
Formulation:	PBS pH7.3, 0.05% NaN ₃ , 50% glycerol
Purification:	Antigen affinity purification
Conjugation:	Unconjugated
Storage:	Store at -20°C as received.
Stability:	Stable for 12 months from date of receipt.
Gene Name:	adaptor related protein complex 1 beta 1 subunit
Database Link:	NP_001118 Entrez Gene 11764 Mouse Entrez Gene 29663 Rat Entrez Gene 162 Human Q10567
Background:	Adaptor protein complex 1 is found at the cytoplasmic face of coated vesicles located at the Golgi complex; where it mediates both the recruitment of clathrin to the membrane and the recognition of sorting signals within the cytosolic tails of transmembrane receptors. This complex is a heterotetramer composed of two large; one medium; and one small adaptin subunit. The protein encoded by this gene serves as one of the large subunits of this complex and is a member of the adaptin protein family. This gene is a candidate meningioma gene. Alternative splicing results in multiple transcript variants.
Synonyms:	ADTB1; AP105A; BAM22; CLAPB2



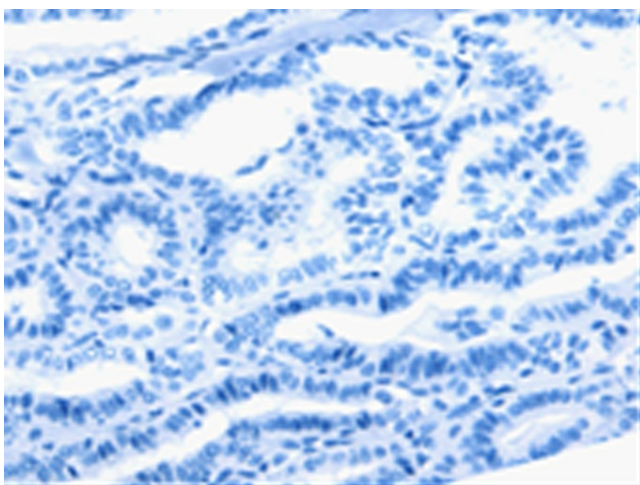
[View online »](#)

Protein Pathways: Lysosome

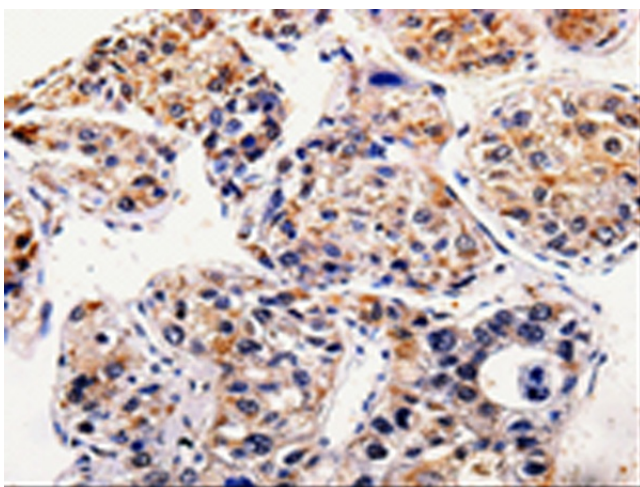
Product images:



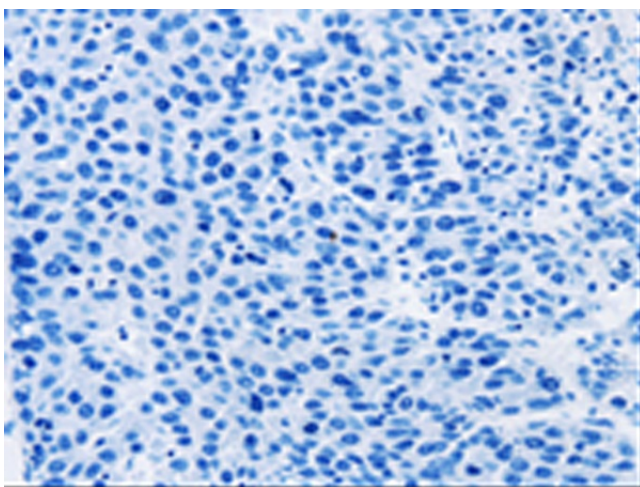
Immunohistochemistry of paraffin-embedded Human thyroid cancer tissue using [TA323222] (AP1B1 Antibody) at dilution 1/100 (Original magnification: $\times 200$)



Immunohistochemistry of paraffin-embedded Human thyroid cancer tissue using [TA323222] (AP1B1 Antibody) at dilution 1/100, treated with synthetic peptide. (Original magnification: $\times 200$)



Immunohistochemistry of paraffin-embedded Human liver cancer tissue using [TA323222] (AP1B1 Antibody) at dilution 1/100 (Original magnification: $\times 200$)



Immunohistochemistry of paraffin-embedded Human liver cancer tissue using [TA323222] (AP1B1 Antibody) at dilution 1/100, treated with synthetic peptide. (Original magnification: $\times 200$)