

## Product datasheet for **TA323220**

### Adrenomedullin (ADM) Rabbit Polyclonal Antibody

#### Product data:

Product Type:	Primary Antibodies
Applications:	IHC
Recommended Dilution:	IHC: 25-100 Positive control: Human lymphoma Predicted cell location: Secreted
Reactivity:	Human
Host:	Rabbit
Isotype:	IgG
Clonality:	Polyclonal
Immunogen:	Synthetic peptide corresponding to a region derived from 129-141 amino acids of human adrenomedullin
Formulation:	PBS pH7.3, 0.05% NaN <sub>3</sub> , 50% glycerol
Concentration:	lot specific
Purification:	Antigen affinity purification
Conjugation:	Unconjugated
Storage:	Store at -20°C as received.
Stability:	Stable for 12 months from date of receipt.
Gene Name:	adrenomedullin
Database Link:	<a href="#">NP_001115</a> <a href="#">Entrez Gene 133 Human</a> <a href="#">P35318</a>



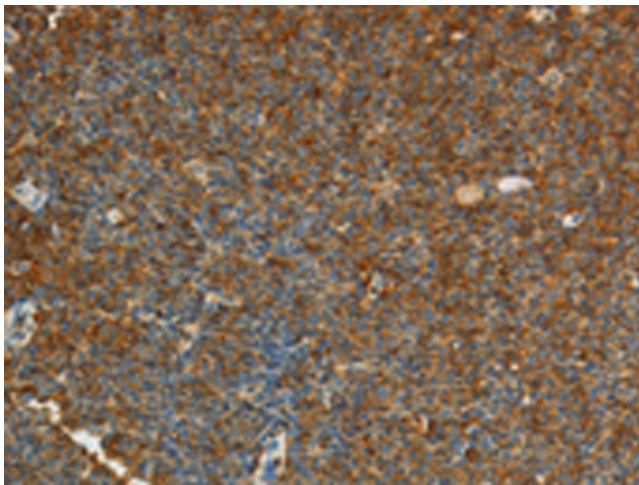
[View online »](#)

**Background:** Adrenomedullin; a hypotensive peptide found in human pheochromocytoma; consists of 52 amino acids; has 1 intramolecular disulfide bond; and shows a slight homology with the calcitonin gene-related peptide. It may function as a hormone in circulation control because it is found in blood in a considerable concentration. The precursor; called preproadrenomedullin; is 185 amino acids long. By RNA-blot analysis; human adrenomedullin mRNA was found to be highly expressed in several tissues. Genomic ADM DNA consists of 4 exons and 3 introns; with the 5-prime flanking region containing TATA; CAAT; and GC boxes. There are also multiple binding sites for activator protein-2 and a cAMP-regulated enhancer element.

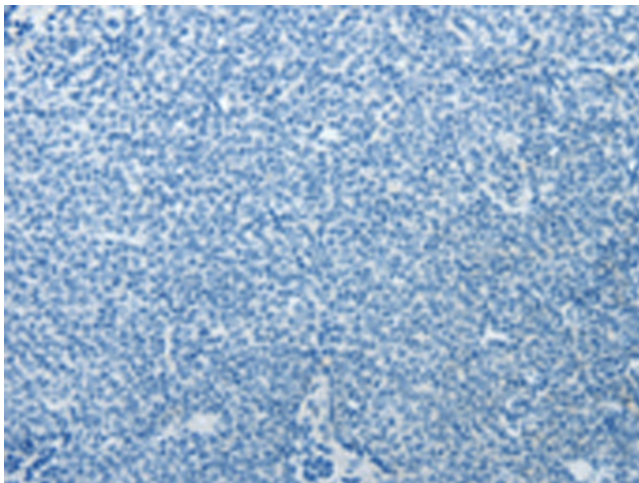
**Synonyms:** AM; PAMP

**Protein Families:** Druggable Genome, Secreted Protein

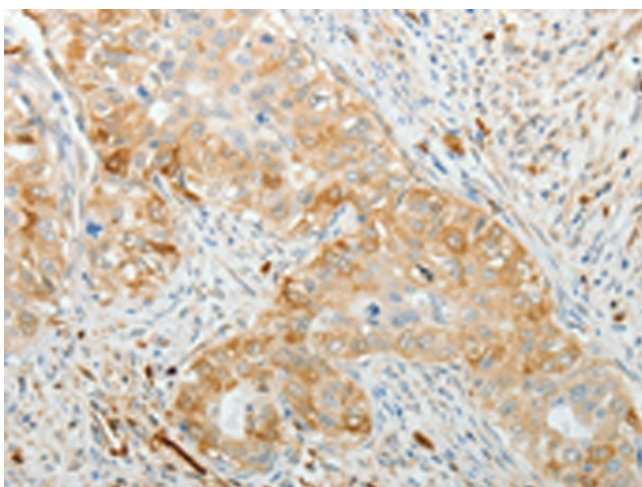
**Product images:**



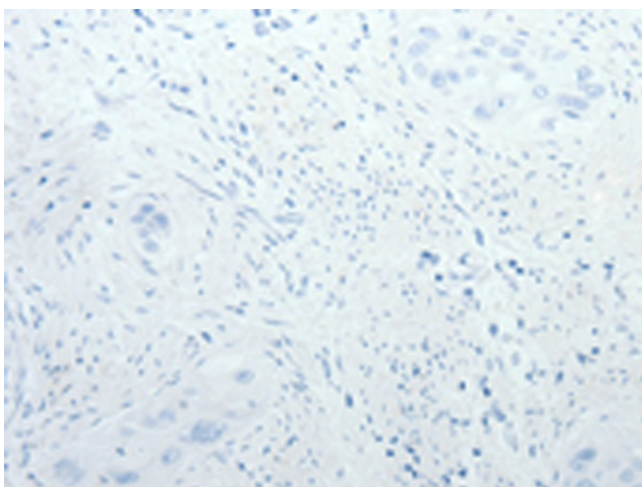
Immunohistochemistry of paraffin-embedded Human lymphoma tissue using TA323220 (ADM Antibody) at dilution 1/20 (Original magnification: ×200)



Immunohistochemistry of paraffin-embedded Human lymphoma tissue using TA323220 (ADM Antibody) at dilution 1/20, treated with synthetic peptide. (Original magnification: ×200)



Immunohistochemistry of paraffin-embedded Human cervical cancer tissue using TA323220 (ADM Antibody) at dilution 1/20 (Original magnification: ×200)



Immunohistochemistry of paraffin-embedded Human cervical cancer tissue using TA323220 (ADM Antibody) at dilution 1/20, treated with synthetic peptide. (Original magnification: ×200)