

Product datasheet for **TA323213**

Bcl x (BCL2L1) Rabbit Polyclonal Antibody

Product data:

Product Type:	Primary Antibodies
Applications:	WB
Recommended Dilution:	WB: 500-2000 WB positive control: Human cervical cancer tissue
Reactivity:	Human, Mouse, Rat
Host:	Rabbit
Isotype:	IgG
Clonality:	Polyclonal
Immunogen:	Fusion protein corresponding to a region derived from 1-210 amino acids of human BCL2-like 1
Formulation:	PBS pH7.3, 0.05% NaN ₃ , 50% glycerol
Concentration:	lot specific
Purification:	Antigen affinity purification
Conjugation:	Unconjugated
Storage:	Store at -20°C as received.
Stability:	Stable for 12 months from date of receipt.
Predicted Protein Size:	26 kDa
Gene Name:	BCL2 like 1
Database Link:	NP_001182 Entrez Gene 12048 Mouse Entrez Gene 24888 Rat Entrez Gene 598 Human Q07817



[View online »](#)

Background:

The protein encoded by this gene belongs to the BCL-2 protein family. BCL-2 family members form hetero- or homodimers and act as anti- or pro-apoptotic regulators that are involved in a wide variety of cellular activities. The proteins encoded by this gene are located at the outer mitochondrial membrane; and have been shown to regulate outer mitochondrial membrane channel (VDAC) opening. VDAC regulates mitochondrial membrane potential; and thus controls the production of reactive oxygen species and release of cytochrome C by mitochondria; both of which are the potent inducers of cell apoptosis. Two alternatively spliced transcript variants; which encode distinct isoforms; have been reported. The longer isoform acts as an apoptotic inhibitor and the shorter form acts as an apoptotic activator.?

Synonyms:

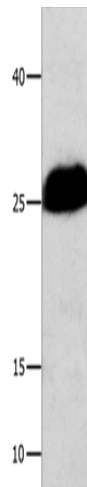
Bcl-X; BCL-XL; BCL2L; BCLX; PPP1R52; S

Protein Families:

Druggable Genome, ES Cell Differentiation/IPS, Transmembrane

Protein Pathways:

Amyotrophic lateral sclerosis (ALS), Apoptosis, Chronic myeloid leukemia, Jak-STAT signaling pathway, Pancreatic cancer, Pathways in cancer, Small cell lung cancer

Product images:

Gel: 12+15%SDS-PAGE

Lysate: 40 µg

Lane: Human cervical cancer tissue

Primary antibody: TA323213 (BCL2L1 Antibody) at dilution 1/300

Secondary antibody: Goat anti rabbit IgG at 1/8000 dilution

Exposure time: 10 seconds