

## Product datasheet for **TA323212**

### **Bcl x (BCL2L1) Rabbit Polyclonal Antibody**

#### **Product data:**

Product Type:	Primary Antibodies
Applications:	WB
Recommended Dilution:	ELISA: 1:2000-5000, WB: 1:500-2000
Reactivity:	Human, Mouse, Rat
Host:	Rabbit
Isotype:	IgG
Clonality:	Polyclonal
Immunogen:	Fusion protein corresponding to N terminal 1-210 amino acids of Human Bcl-2-like protein 1
Formulation:	PBS pH7.3, 0.05% NaN <sub>3</sub> , 50% glycerol
Concentration:	lot specific
Purification:	Antigen affinity purification
Conjugation:	Unconjugated
Storage:	Store at -20°C as received.
Stability:	Stable for 12 months from date of receipt.
Predicted Protein Size:	26 kDa
Gene Name:	BCL2 like 1
Database Link:	<a href="#">NP_001182</a> <a href="#">Entrez Gene 12048 MouseEntrez Gene 24888 RatEntrez Gene 598 Human Q07817</a>

**Background:** The protein encoded by this gene belongs to the BCL-2 protein family. BCL-2 family members form hetero- or homodimers and act as anti- or pro-apoptotic regulators that are involved in a wide variety of cellular activities. The proteins encoded by this gene are located at the outer mitochondrial membrane; and have been shown to regulate outer mitochondrial membrane channel (VDAC) opening. VDAC regulates mitochondrial membrane potential; and thus controls the production of reactive oxygen species and release of cytochrome C by mitochondria; both of which are the potent inducers of cell apoptosis. Two alternatively spliced transcript variants; which encode distinct isoforms; have been reported. The longer isoform acts as an apoptotic inhibitor and the shorter form acts as an apoptotic activator.



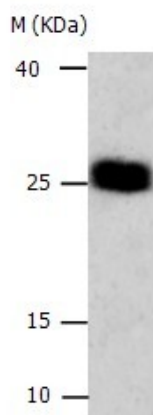
[View online »](#)

**Synonyms:** Bcl-X; BCL-XL; BCL2L; BCLX; PPP1R52; S

**Protein Families:** Druggable Genome, ES Cell Differentiation/IPS, Transmembrane

**Protein Pathways:** Amyotrophic lateral sclerosis (ALS), Apoptosis, Chronic myeloid leukemia, Jak-STAT signaling pathway, Pancreatic cancer, Pathways in cancer, Small cell lung cancer

### Product images:



Predicted band size: 26kDa. Positive control: Human cervical cancer tissue lysate. Recommended dilution: 1/500-2000. (Gel: 10%SDS-PAGE Lysate: 15 ug Primary antibody: 1/750 dilution Secondary antibody: Donkey anti Rabbit IgG - H&L (HRP) at 1/3000 dilution Exposure time: 10 seconds)