

Product datasheet for **TA323208**

BMP4 Rabbit Polyclonal Antibody

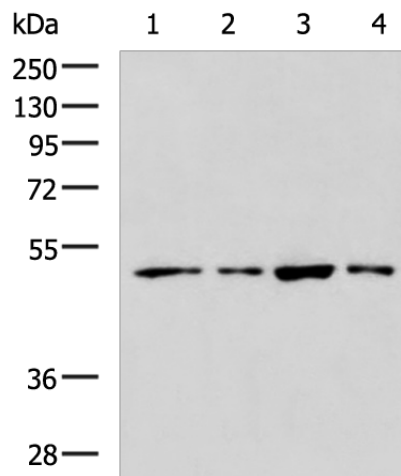
Product data:

Product Type:	Primary Antibodies
Applications:	IHC, WB
Recommended Dilution:	WB: 200-1000 WB positive control: Hela, HT-29, 231 and HepG2 cell lysates IHC: 200-400 Positive control: Human liver cancer Predicted cell location: Secreted
Reactivity:	Human, Mouse, Rat
Host:	Rabbit
Isotype:	IgG
Clonality:	Polyclonal
Immunogen:	Fusion protein corresponding to a region derived from 293-408 amino acids of human bone morphogenetic protein 4
Formulation:	PBS pH7.3, 0.05% NaN ₃ , 50% glycerol
Concentration:	lot specific
Purification:	Antigen affinity purification
Conjugation:	Unconjugated
Storage:	Store at -20°C as received.
Stability:	Stable for 12 months from date of receipt.
Predicted Protein Size:	47 kDa
Gene Name:	bone morphogenetic protein 4
Database Link:	NP_001193 Entrez Gene 12159 Mouse Entrez Gene 25296 Rat Entrez Gene 652 Human P12644

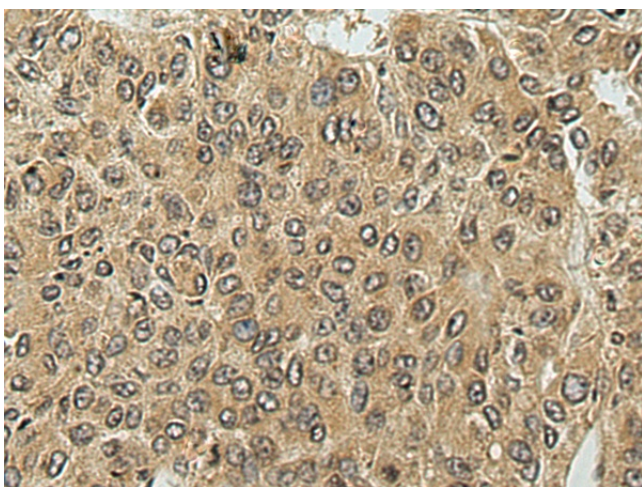


[View online »](#)

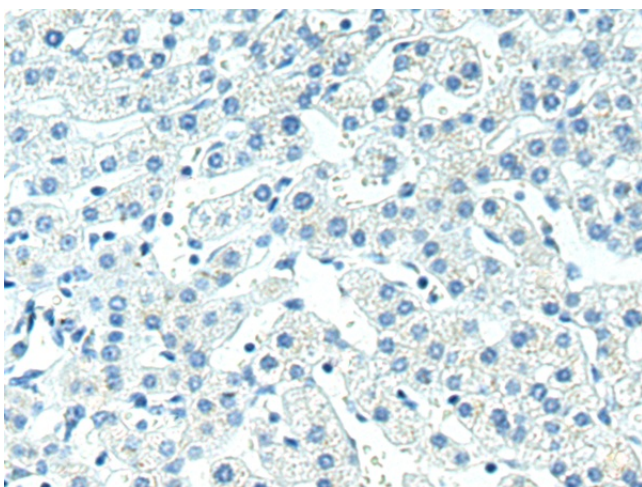
Background:	The protein encoded by this gene is a member of the bone morphogenetic protein family which is part of the transforming growth factor-beta superfamily. The superfamily includes large families of growth and differentiation factors. Bone morphogenetic proteins were originally identified by an ability of demineralized bone extract to induce endochondral osteogenesis in vivo in an extraskelatal site. This particular family member plays an important role in the onset of endochondral bone formation in humans; and a reduction in expression has been associated with a variety of bone diseases; including the heritable disorder Fibrodysplasia Ossificans Progressiva. Alternative splicing in the 5' untranslated region of this gene has been described and three variants are described; all encoding an identical protein.
Synonyms:	BMP2B; BMP2B1; MCOPS6; OFC11; ZYME
Protein Families:	Adult stem cells, Cancer stem cells, Druggable Genome, Embryonic stem cells, Induced pluripotent stem cells, Secreted Protein, Stem cell relevant signaling - TGFb/BMP signaling pathway
Protein Pathways:	Basal cell carcinoma, Hedgehog signaling pathway, Pathways in cancer, TGF-beta signaling pathway

Product images:

Gel: 8%SDS-PAGE
Lysate: 40 µg
Lane 1-4: HeLa
HT-29
231 and HepG2 cell lysates
Primary antibody: TA323208 (BMP4 Antibody) at
dilution 1/250
Secondary antibody: Goat anti rabbit IgG at
1/5000 dilution
Exposure time: 10 minutes



Immunohistochemistry of paraffin-embedded Human liver cancer tissue using TA323208 (BMP4 Antibody) at dilution 1/180 (Original magnification: x200)



Immunohistochemistry of paraffin-embedded Human liver cancer tissue using TA323208 (BMP4 Antibody) at dilution 1/180, treated with fusion protein. (Original magnification: x200)