

Product datasheet for **TA323205S**

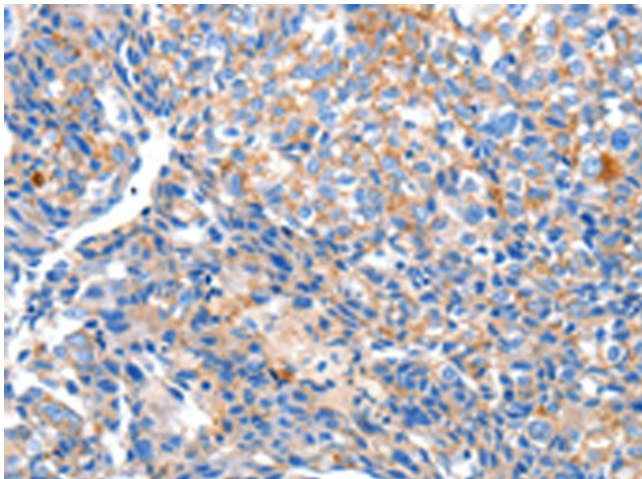
HCN2 Rabbit Polyclonal Antibody

Product data:

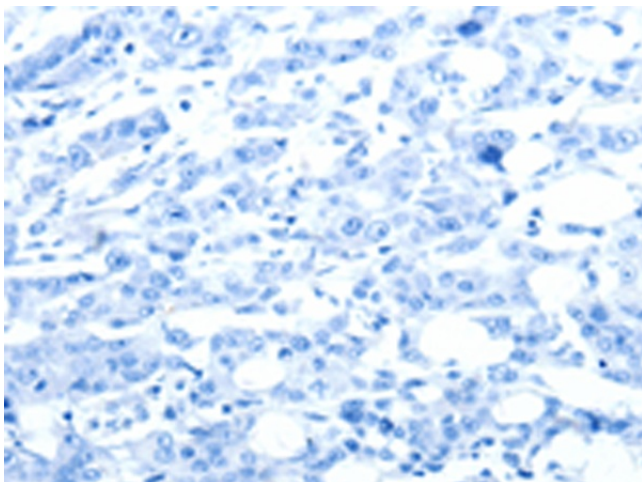
Product Type:	Primary Antibodies
Applications:	IHC
Recommended Dilution:	IHC: 50-200 Positive control: Human breast cancer Predicted cell location: Cytoplasm
Reactivity:	Human, Mouse, Rat
Host:	Rabbit
Isotype:	IgG
Clonality:	Polyclonal
Immunogen:	Synthetic peptide corresponding to a region derived from 874-886 amino acids of Human hyperpolarization activated cyclic nucleotide-gated potassium channel 2
Formulation:	PBS pH7.3, 0.05% NaN ₃ , 50% glycerol
Purification:	Antigen affinity purification
Conjugation:	Unconjugated
Storage:	Store at -20°C as received.
Stability:	Stable for 12 months from date of receipt.
Gene Name:	hyperpolarization activated cyclic nucleotide gated potassium channel 2
Database Link:	NP_001185 Entrez Gene 15166 Mouse Entrez Gene 114244 Rat Entrez Gene 610 Human Q9UL51
Background:	Hyperpolarization-activated cation channels of the HCN gene family; such as HCN2; contribute to spontaneous rhythmic activity in both heart and brain. Hyperpolarization-activated ion channel exhibiting weak selectivity for potassium over sodium ions. Contributes to the native pacemaker currents in heart (If) and in neurons (Ih). Produces a large instantaneous current. Activated by cAMP. Modulated by intracellular chloride ions and pH; acidic pH shifts the activation to more negative voltages.
Synonyms:	BCNG-2; BCNG2; HAC-1
Protein Families:	Druggable Genome, Ion Channels: Cyclic nucleotide gated, Transmembrane



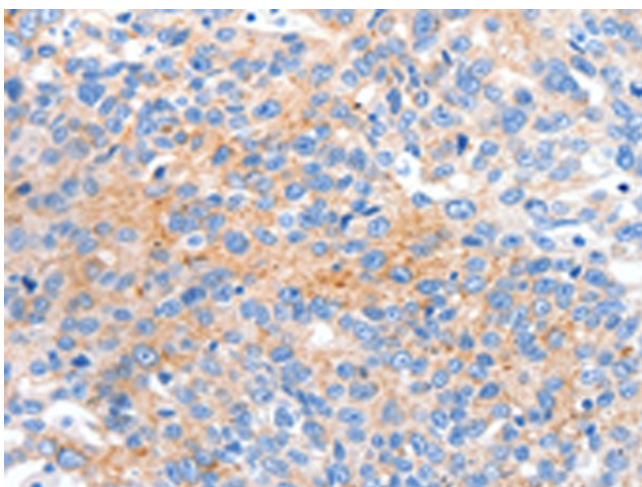
[View online »](#)

Product images:

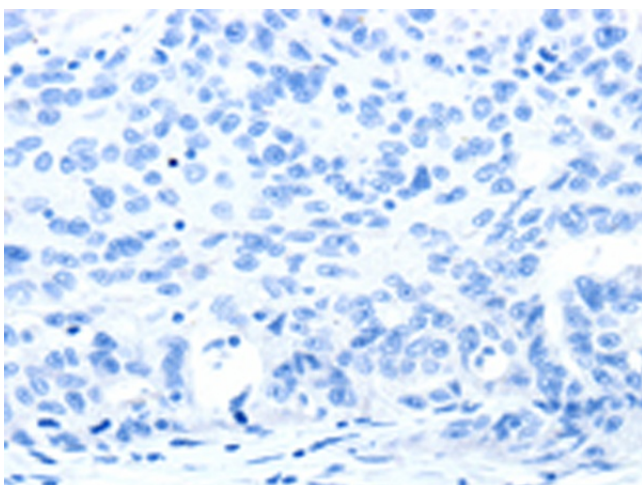
Immunohistochemistry of paraffin-embedded Human breast cancer tissue using [TA323205] (HCN2 Antibody) at dilution 1/80 (Original magnification: $\times 200$)



Immunohistochemistry of paraffin-embedded Human breast cancer tissue using [TA323205] (HCN2 Antibody) at dilution 1/80, treated with synthetic peptide. (Original magnification: $\times 200$)



Immunohistochemistry of paraffin-embedded Human ovarian cancer tissue using [TA323205] (HCN2 Antibody) at dilution 1/80 (Original magnification: $\times 200$)



Immunohistochemistry of paraffin-embedded Human ovarian cancer tissue using [TA323205] (HCN2 Antibody) at dilution 1/80, treated with synthetic peptide. (Original magnification: $\times 200$)