

## Product datasheet for **TA323204**

### Caspase 1 (CASP1) Rabbit Polyclonal Antibody

#### Product data:

Product Type:	Primary Antibodies
Applications:	IHC, WB
Recommended Dilution:	WB: 500-2000 WB positive control: MCF-7 cell, 293T cell, Hela cell, Jurkat cell lysates IHC: 25-50 Positive control: Human liver cancer Predicted cell location: Cytoplasm
Reactivity:	Human
Host:	Rabbit
Isotype:	IgG
Clonality:	Polyclonal
Immunogen:	Full length fusion protein
Formulation:	PBS pH7.4, 0.05% NaN <sub>3</sub> , 40% glycerol
Concentration:	lot specific
Purification:	Antigen affinity purification
Conjugation:	Unconjugated
Storage:	Store at -20°C as received.
Stability:	Stable for 12 months from date of receipt.
Predicted Protein Size:	45 kDa
Gene Name:	caspase 1
Database Link:	<a href="#">NP_001214</a> <a href="#">Entrez Gene 834 Human</a> <a href="#">P29466</a>



[View online »](#)

**Background:**

This gene encodes a protein which is a member of the cysteine-aspartic acid protease (caspase) family. Sequential activation of caspases plays a central role in the execution-phase of cell apoptosis. Caspases exist as inactive proenzymes which undergo proteolytic processing at conserved aspartic residues to produce 2 subunits; large and small; that dimerize to form the active enzyme. This gene was identified by its ability to proteolytically cleave and activate the inactive precursor of interleukin-1; a cytokine involved in the processes such as inflammation; septic shock; and wound healing. This gene has been shown to induce cell apoptosis and may function in various developmental stages. Studies of a similar gene in mouse suggest a role in the pathogenesis of Huntington disease. Alternative splicing results in transcript variants encoding distinct isoforms.

**Synonyms:**

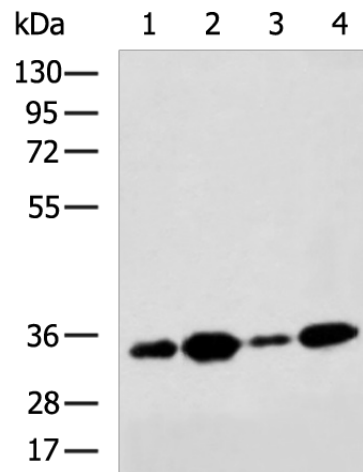
ICE; IL1BC; P45

**Protein Families:**

Druggable Genome, Protease

**Protein Pathways:**

Amyotrophic lateral sclerosis (ALS), Cytosolic DNA-sensing pathway, NOD-like receptor signaling pathway

**Product images:**

Gel: 8%SDS-PAGE

Lysate: 40 µg

Lane 1-4: MCF-7 cell

293T cell

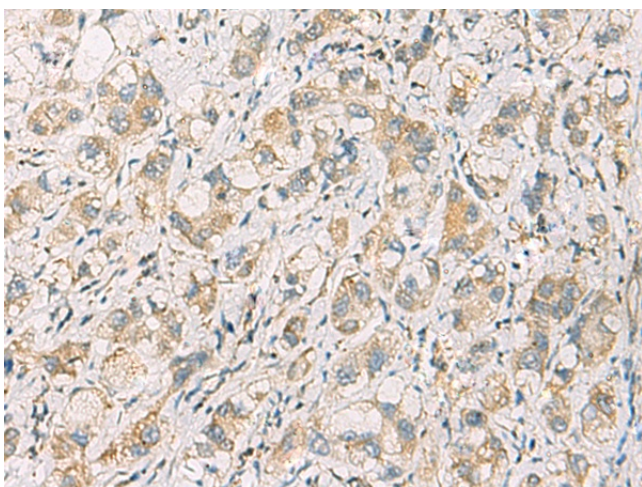
HeLa cell

Jurkat cell lysates

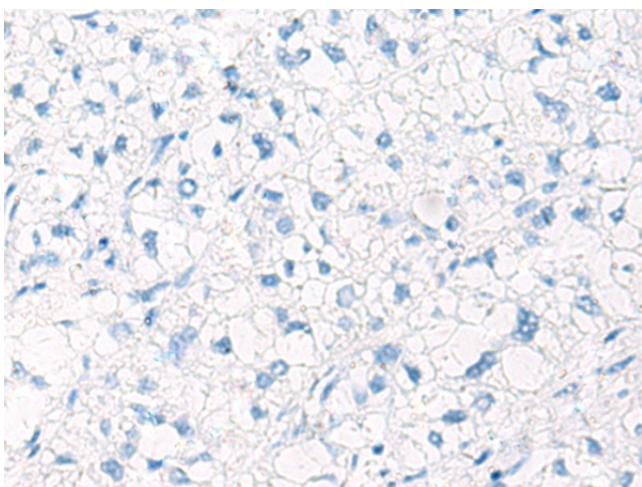
Primary antibody: TA323204 (CASP1 Antibody) at dilution 1/500

Secondary antibody: Goat anti rabbit IgG at 1/5000 dilution

Exposure time: 1 minute



Immunohistochemistry of paraffin-embedded Human liver cancer tissue using TA323204 (CASP1 Antibody) at dilution 1/40 (Original magnification:  $\times 200$ )



Immunohistochemistry of paraffin-embedded Human liver cancer tissue using TA323204 (CASP1 Antibody) at dilution 1/40, treated with fusion protein. (Original magnification:  $\times 200$ )