

Product datasheet for **TA323202**

CAMK2B Rabbit Polyclonal Antibody

Product data:

| | |
|------------------------------|--|
| Product Type: | Primary Antibodies |
| Applications: | IHC |
| Recommended Dilution: | IHC: 10-25 Positive control: Human thyroid cancer Predicted cell location: Cytoplasm |
| Reactivity: | Human, Mouse, Rat |
| Host: | Rabbit |
| Isotype: | IgG |
| Clonality: | Polyclonal |
| Immunogen: | Fusion protein corresponding to a region derived from 14-272 amino acids of Human Calcium/calmodulin-dependent protein kinase type II subunit beta |
| Formulation: | PBS pH7.3, 0.05% NaN ₃ , 50% glycerol |
| Concentration: | lot specific |
| Purification: | Antigen affinity purification |
| Conjugation: | Unconjugated |
| Storage: | Store at -20°C as received. |
| Stability: | Stable for 12 months from date of receipt. |
| Gene Name: | calcium/calmodulin dependent protein kinase II beta |
| Database Link: | NP_742081 Entrez Gene 12323 MouseEntrez Gene 24245 RatEntrez Gene 816 Human Q13554 |
| Background: | The product of this gene belongs to the serine/threonine protein kinase family and to the Ca(2+)/calmodulin-dependent protein kinase subfamily. Calcium signaling is crucial for several aspects of plasticity at glutamatergic synapses. In mammalian cells; the enzyme is composed of four different chains: alpha; beta; gamma; and delta. The product of this gene is a beta chain. It is possible that distinct isoforms of this chain have different cellular localizations and interact differently with calmodulin. Eight transcript variants encoding eight distinct isoforms have been identified for this gene. |



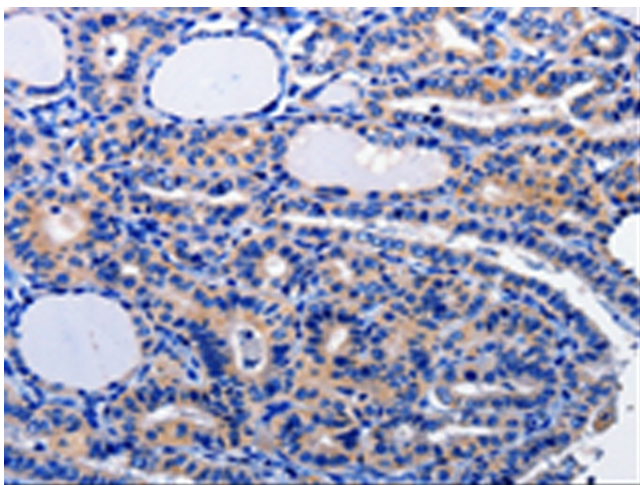
[View online »](#)

Synonyms: CAM2; CAMK2; CAMKB

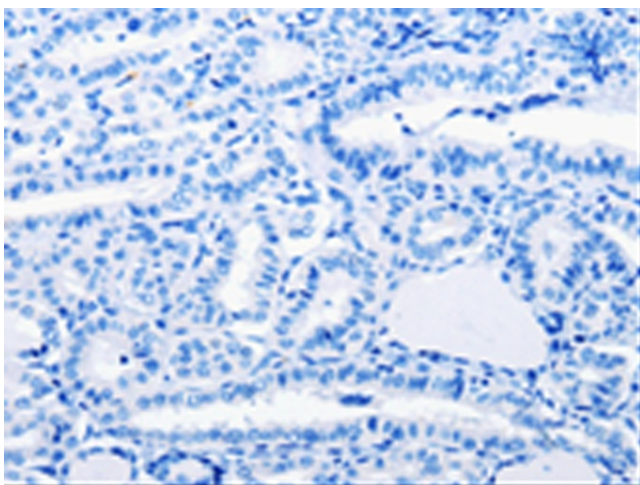
Protein Families: Druggable Genome, Protein Kinase

Protein Pathways: Calcium signaling pathway, ErbB signaling pathway, Glioma, GnRH signaling pathway, Long-term potentiation, Melanogenesis, Neurotrophin signaling pathway, Olfactory transduction, Oocyte meiosis, Wnt signaling pathway

Product images:



Immunohistochemistry of paraffin-embedded Human thyroid cancer tissue using TA323202 (CAMK2B Antibody) at dilution 1/10 (Original magnification: $\times 200$)



Immunohistochemistry of paraffin-embedded Human thyroid cancer tissue using TA323202 (CAMK2B Antibody) at dilution 1/10, treated with fusion protein. (Original magnification: $\times 200$)