

## Product datasheet for **TA323199**

### Caspase-7 (CASP7) Rabbit Polyclonal Antibody

#### Product data:

Product Type:	Primary Antibodies
Applications:	IHC, WB
Recommended Dilution:	WB: 200-1000 WB positive control: Mouse brain tissue IHC: 25-100 Positive control: Human liver cancer Predicted cell location: Cytoplasm
Reactivity:	Human, Mouse
Host:	Rabbit
Isotype:	IgG
Clonality:	Polyclonal
Immunogen:	Fusion protein corresponding to a region derived from 207-303 amino acids of human caspase 7, apoptosis-related cysteine peptidase
Formulation:	PBS pH7.3, 0.05% NaN <sub>3</sub> , 50% glycerol
Concentration:	lot specific
Purification:	Antigen affinity purification
Conjugation:	Unconjugated
Storage:	Store at -20°C as received.
Stability:	Stable for 12 months from date of receipt.
Predicted Protein Size:	34 kDa
Gene Name:	caspase 7
Database Link:	<a href="#">NP_001218</a> <a href="#">Entrez Gene 12369 Mouse</a> <a href="#">Entrez Gene 840 Human</a> <a href="#">P55210</a>



[View online »](#)

**Background:**

This gene encodes a member of the cysteine-aspartic acid protease (caspase) family. Sequential activation of caspases plays a central role in the execution-phase of cell apoptosis. Caspases exist as inactive proenzymes which undergo proteolytic processing at conserved aspartic residues to produce two subunits, large and small, that dimerize to form the active enzyme. The precursor of the encoded protein is cleaved by caspase 3 and 10, is activated upon cell death stimuli and induces apoptosis. Alternatively spliced transcript variants encoding multiple isoforms have been observed for this gene.?

**Synonyms:**

CASP-7; CMH-1; ICE-LAP3; LICE2; MCH3

**Protein Families:**

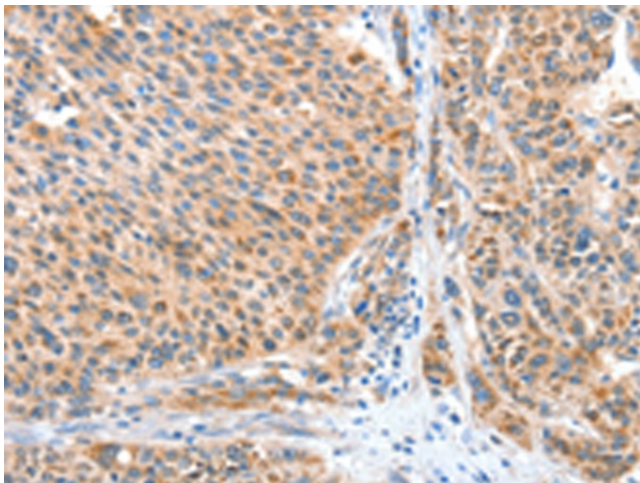
Druggable Genome, Protease

**Protein Pathways:**

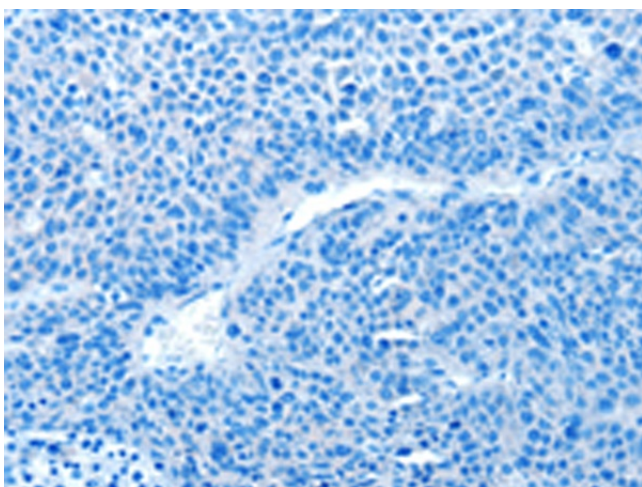
Alzheimer's disease, Apoptosis

**Product images:**

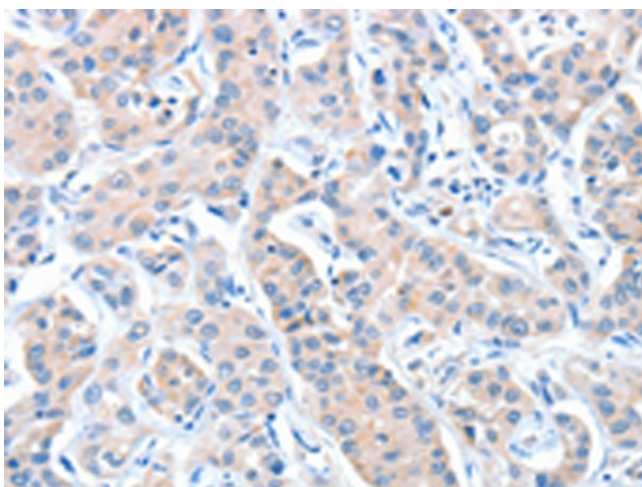

Gel: 8+12%SDS-PAGE  
 Lysate: 40 µg  
 Lane: Mouse brain tissue  
 Primary antibody: TA323199 (CASP7 Antibody) at dilution 1/186  
 Secondary antibody: Goat anti rabbit IgG at 1/8000 dilution  
 Exposure time: 1 minute



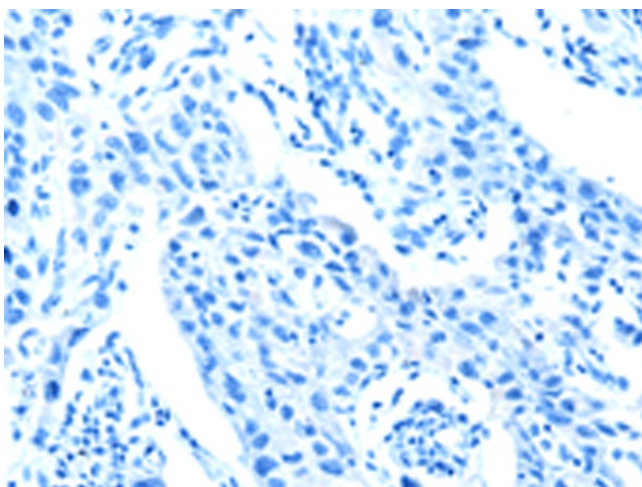
Immunohistochemistry of paraffin-embedded Human liver cancer tissue using TA323199 (CASP7 Antibody) at dilution 1/20 (Original magnification: ×200)



Immunohistochemistry of paraffin-embedded Human liver cancer tissue using TA323199 (CASP7 Antibody) at dilution 1/20, treated with fusion protein. (Original magnification:  $\times 200$ )



Immunohistochemistry of paraffin-embedded Human lung cancer tissue using TA323199 (CASP7 Antibody) at dilution 1/20 (Original magnification:  $\times 200$ )



Immunohistochemistry of paraffin-embedded Human lung cancer tissue using TA323199 (CASP7 Antibody) at dilution 1/20, treated with fusion protein. (Original magnification:  $\times 200$ )