

Product datasheet for **TA323198**

CDK3 Rabbit Polyclonal Antibody

Product data:

Product Type:	Primary Antibodies
Applications:	IHC
Recommended Dilution:	IHC: 25-100 Positive control: Human lung cancer Predicted cell location: Cytoplasm
Reactivity:	Human, Mouse
Host:	Rabbit
Isotype:	IgG
Clonality:	Polyclonal
Immunogen:	Synthetic peptide corresponding to a region derived from 235-250 amino acids of Human cyclin-dependent kinase 3
Formulation:	PBS pH7.3, 0.05% NaN ₃ , 50% glycerol
Concentration:	lot specific
Purification:	Antigen affinity purification
Conjugation:	Unconjugated
Storage:	Store at -20°C as received.
Stability:	Stable for 12 months from date of receipt.
Gene Name:	cyclin-dependent kinase 3
Database Link:	NP_001249 Entrez Gene 1018 Human Q00526



[View online »](#)

Background:

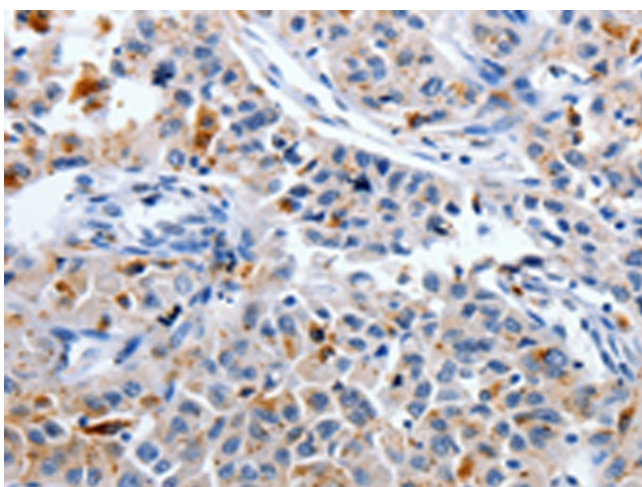
This gene encodes a member of the cyclin-dependent protein kinase family. The protein promotes entry into S phase; in part by activating members of the E2F family of transcription factors. The protein also associates with cyclin C and phosphorylates the retinoblastoma 1 protein to promote exit from G₀. Serine/threonine-protein kinase that plays a critical role in the control of the eukaryotic cell cycle; involved in G₀-G₁ and G₁-S cell cycle transitions. Interacts with CCNC/cyclin-C during interphase. Phosphorylates histone H1; ATF1; RB1 and CABLES1. ATF1 phosphorylation triggers ATF1 transactivation and transcriptional activities; and promotes cell proliferation and transformation. CDK3/cyclin-C mediated RB1 phosphorylation is required for G₀-G₁ transition. Promotes G₁-S transition probably by contributing to the activation of E2F1; E2F2 and E2F3 in a RB1-independent manner.

Synonyms:

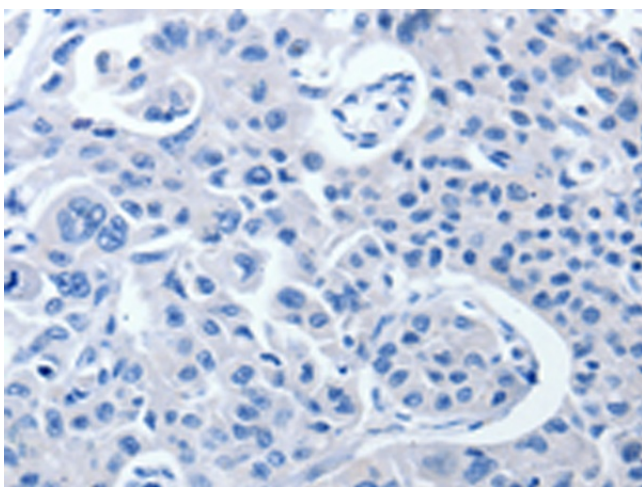
cyclin-dependent kinase 3

Protein Families:

Druggable Genome, Protein Kinase

Product images:

Immunohistochemistry of paraffin-embedded Human lung cancer tissue using TA323198 (CDK3 Antibody) at dilution 1/30 (Original magnification: ×200)



Immunohistochemistry of paraffin-embedded Human lung cancer tissue using TA323198 (CDK3 Antibody) at dilution 1/30, treated with synthetic peptide. (Original magnification: ×200)