

Product datasheet for **TA323192S**

Claudin 7 (CLDN7) Rabbit Polyclonal Antibody

Product data:

Product Type:	Primary Antibodies
Applications:	IHC, WB
Recommended Dilution:	WB: 1000-3000 WB positive control: Human liver cancer tissue IHC: 50-150 Positive control: Human colon cancer Predicted cell location: Cytoplasm, Cell membrane
Reactivity:	Human, Mouse, Rat
Host:	Rabbit
Isotype:	IgG
Clonality:	Polyclonal
Immunogen:	Synthetic peptide corresponding to a region derived from 199-212 amino acids of Human claudin 7
Formulation:	PBS pH7.3, 0.05% NaN ₃ , 50% glycerol
Purification:	Antigen affinity purification
Conjugation:	Unconjugated
Storage:	Store at -20°C as received.
Stability:	Stable for 12 months from date of receipt.
Predicted Protein Size:	23 kDa
Gene Name:	claudin 7
Database Link:	NP_001298 Entrez Gene 53624 Mouse Entrez Gene 65132 Rat Entrez Gene 1366 Human O95471



[View online »](#)

Background:

This gene encodes a member of the claudin family. Claudins are integral membrane proteins and components of tight junction strands. Tight junction strands serve as a physical barrier to prevent solutes and water from passing freely through the paracellular space between epithelial or endothelial cell sheets; and also play critical roles in maintaining cell polarity and signal transductions. Differential expression of this gene has been observed in different types of malignancies; including breast cancer; ovarian cancer; hepatocellular carcinomas; urinary tumors; prostate cancer; lung cancer; head and neck cancers; thyroid carcinomas; etc.. Alternatively spliced transcript variants encoding different isoforms have been found.

Synonyms:

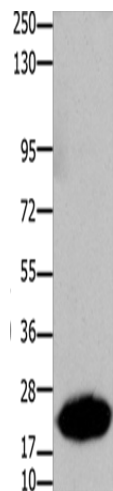
CEPTRL2; claudin-1; CLDN-7; CPETRL2; Hs.84359

Protein Families:

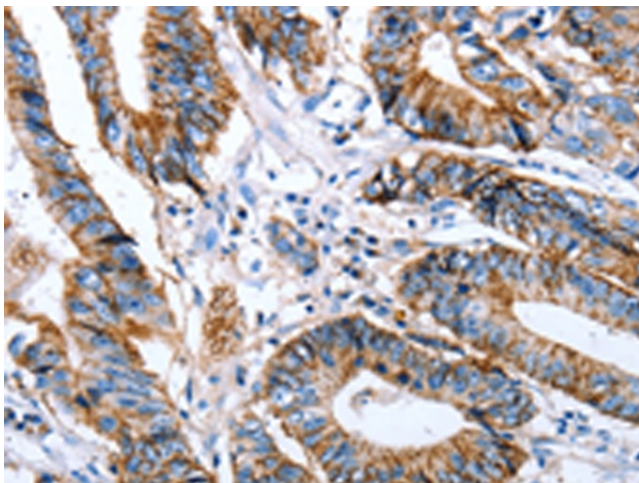
Transmembrane

Protein Pathways:

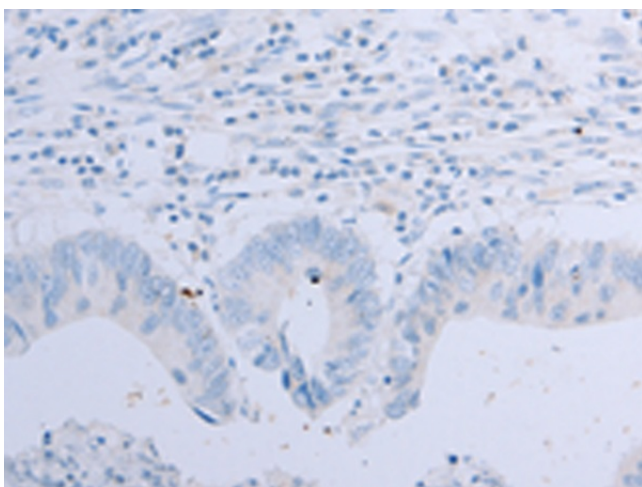
Cell adhesion molecules (CAMs), Leukocyte transendothelial migration, Tight junction

Product images:


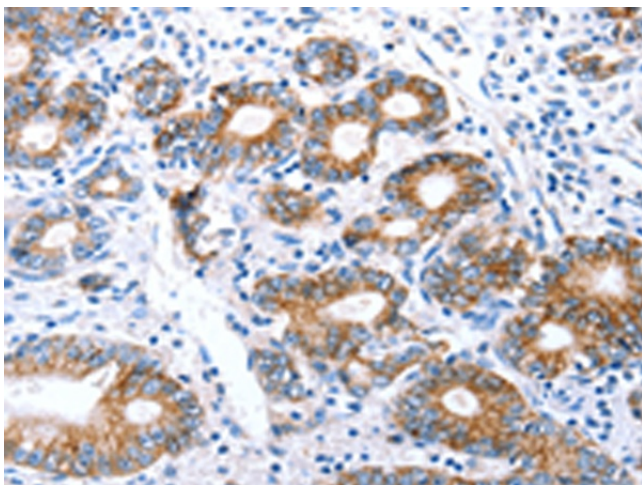
Gel: 10%SDS-PAGE
 Lysate: 30 µg
 Lane: Human liver cancer tissue
 Primary antibody: [TA323192] (CLDN7 Antibody) at dilution 1/1050
 Secondary antibody: Goat anti rabbit IgG at 1/8000 dilution
 Exposure time: 40 seconds



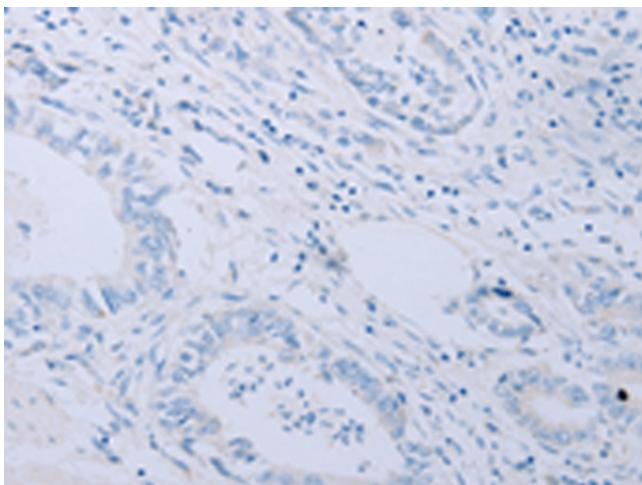
Immunohistochemistry of paraffin-embedded Human colon cancer tissue using [TA323192] (CLDN7 Antibody) at dilution 1/50 (Original magnification: ×200)



Immunohistochemistry of paraffin-embedded Human colon cancer tissue using [TA323192] (CLDN7 Antibody) at dilution 1/50, treated with synthetic peptide. (Original magnification: $\times 200$)



Immunohistochemistry of paraffin-embedded Human stomach cancer tissue using [TA323192] (CLDN7 Antibody) at dilution 1/50 (Original magnification: $\times 200$)



Immunohistochemistry of paraffin-embedded Human stomach cancer tissue using [TA323192] (CLDN7 Antibody) at dilution 1/50, treated with synthetic peptide. (Original magnification: $\times 200$)