

## Product datasheet for **TA323192**

### Claudin 7 (CLDN7) Rabbit Polyclonal Antibody

#### Product data:

Product Type:	Primary Antibodies
Applications:	IHC, WB
Recommended Dilution:	WB: 1000-3000 WB positive control: Human liver cancer tissue IHC: 50-150 Positive control: Human colon cancer Predicted cell location: Cytoplasm, Cell membrane
Reactivity:	Human, Mouse, Rat
Host:	Rabbit
Isotype:	IgG
Clonality:	Polyclonal
Immunogen:	Synthetic peptide corresponding to a region derived from 199-212 amino acids of Human claudin 7
Formulation:	PBS pH7.3, 0.05% NaN <sub>3</sub> , 50% glycerol
Concentration:	lot specific
Purification:	Antigen affinity purification
Conjugation:	Unconjugated
Storage:	Store at -20°C as received.
Stability:	Stable for 12 months from date of receipt.
Predicted Protein Size:	23 kDa
Gene Name:	claudin 7
Database Link:	<a href="#">NP_001298</a> <a href="#">Entrez Gene 53624 Mouse</a> <a href="#">Entrez Gene 65132 Rat</a> <a href="#">Entrez Gene 1366 Human</a> <a href="#">O95471</a>



[View online »](#)

**Background:**

This gene encodes a member of the claudin family. Claudins are integral membrane proteins and components of tight junction strands. Tight junction strands serve as a physical barrier to prevent solutes and water from passing freely through the paracellular space between epithelial or endothelial cell sheets; and also play critical roles in maintaining cell polarity and signal transductions. Differential expression of this gene has been observed in different types of malignancies; including breast cancer; ovarian cancer; hepatocellular carcinomas; urinary tumors; prostate cancer; lung cancer; head and neck cancers; thyroid carcinomas; etc.. Alternatively spliced transcript variants encoding different isoforms have been found.

**Synonyms:**

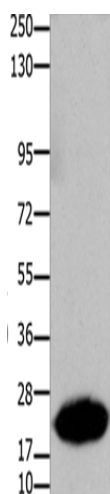
CEPTRL2; claudin-1; CLDN-7; CPETRL2; Hs.84359

**Protein Families:**

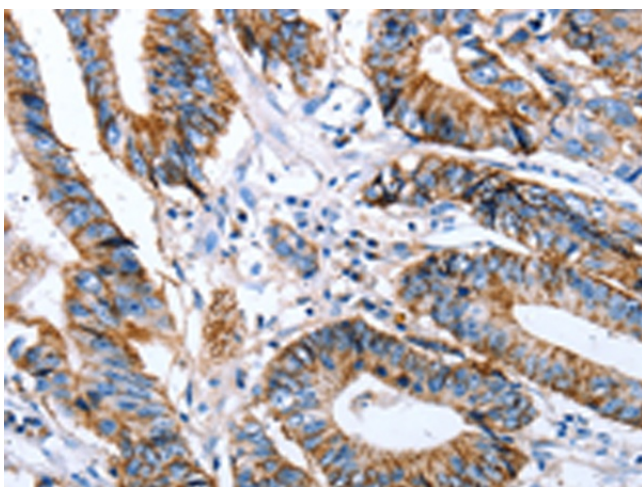
Transmembrane

**Protein Pathways:**

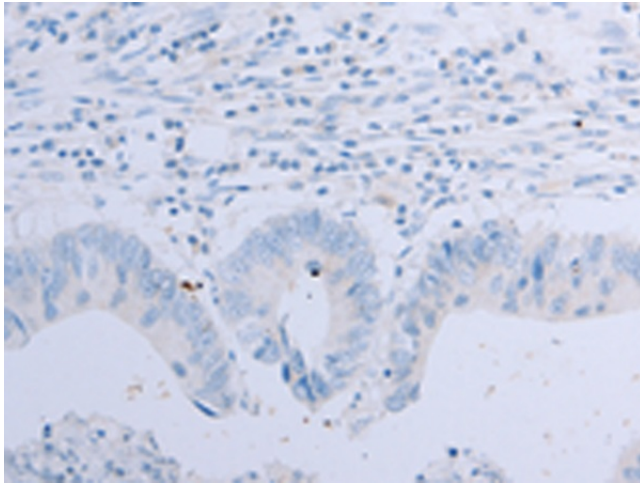
Cell adhesion molecules (CAMs), Leukocyte transendothelial migration, Tight junction

**Product images:**

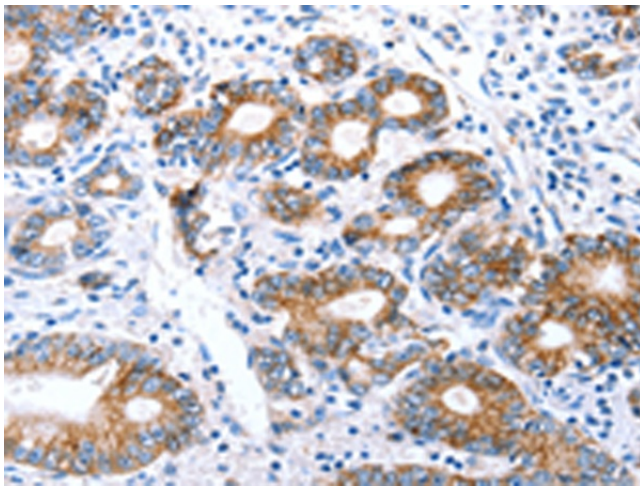
Gel: 10%SDS-PAGE  
Lysate: 30  $\mu$ g  
Lane: Human liver cancer tissue  
Primary antibody: TA323192 (CLDN7 Antibody) at dilution 1/1050  
Secondary antibody: Goat anti rabbit IgG at 1/8000 dilution  
Exposure time: 40 seconds



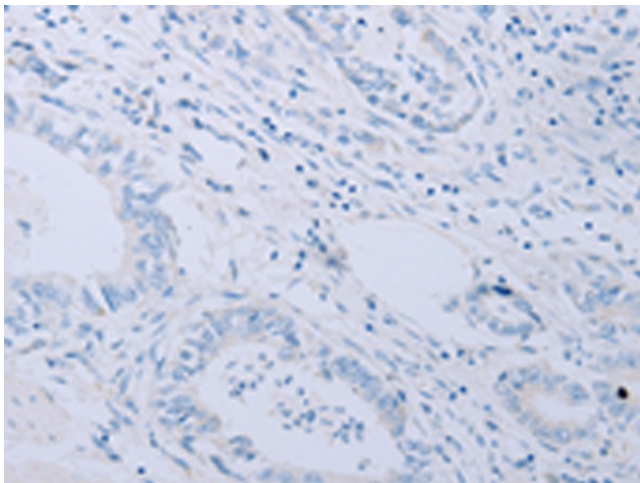
Immunohistochemistry of paraffin-embedded Human colon cancer tissue using TA323192 (CLDN7 Antibody) at dilution 1/50 (Original magnification:  $\times$ 200)



Immunohistochemistry of paraffin-embedded Human colon cancer tissue using TA323192 (CLDN7 Antibody) at dilution 1/50, treated with synthetic peptide. (Original magnification: ×200)



Immunohistochemistry of paraffin-embedded Human stomach cancer tissue using TA323192 (CLDN7 Antibody) at dilution 1/50 (Original magnification: ×200)



Immunohistochemistry of paraffin-embedded Human stomach cancer tissue using TA323192 (CLDN7 Antibody) at dilution 1/50, treated with synthetic peptide. (Original magnification: ×200)