

## Product datasheet for **TA323191S**

### Claudin 7 (CLDN7) Rabbit Polyclonal Antibody

#### Product data:

Product Type:	Primary Antibodies
Applications:	WB
Recommended Dilution:	WB: 200-1000 WB positive control: Mouse liver tissue
Reactivity:	Human, Mouse, Rat
Host:	Rabbit
Isotype:	IgG
Clonality:	Polyclonal
Immunogen:	Synthetic peptide corresponding to a region derived from 199-212 amino acids of Human claudin 7
Formulation:	PBS pH7.3, 0.05% NaN <sub>3</sub> , 50% glycerol
Purification:	Antigen affinity purification
Conjugation:	Unconjugated
Storage:	Store at -20°C as received.
Stability:	Stable for 12 months from date of receipt.
Predicted Protein Size:	23 kDa
Gene Name:	claudin 7
Database Link:	<a href="#">NP_001298</a> <a href="#">Entrez Gene 53624 Mouse</a> <a href="#">Entrez Gene 65132 Rat</a> <a href="#">Entrez Gene 1366 Human</a> <a href="#">O95471</a>

**Background:** This gene encodes a member of the claudin family. Claudins are integral membrane proteins and components of tight junction strands. Tight junction strands serve as a physical barrier to prevent solutes and water from passing freely through the paracellular space between epithelial or endothelial cell sheets; and also play critical roles in maintaining cell polarity and signal transductions. Differential expression of this gene has been observed in different types of malignancies; including breast cancer; ovarian cancer; hepatocellular carcinomas; urinary tumors; prostate cancer; lung cancer; head and neck cancers; thyroid carcinomas; etc.. Alternatively spliced transcript variants encoding different isoforms have been found.



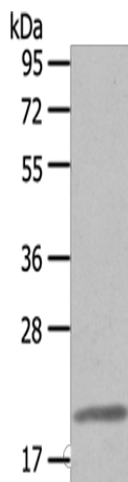
[View online »](#)

**Synonyms:** CEPTRL2; claudin-1; CLDN-7; CPETRL2; Hs.84359

**Protein Families:** Transmembrane

**Protein Pathways:** Cell adhesion molecules (CAMs), Leukocyte transendothelial migration, Tight junction

**Product images:**



Gel: 10%SDS-PAGE  
Lysate: 40 µg  
Lane: Mouse liver tissue  
Primary antibody: [TA323191] (CLDN7 Antibody)  
at dilution 1/200  
Secondary antibody: Goat anti rabbit IgG at  
1/8000 dilution  
Exposure time: 1 minute