

## Product datasheet for **TA323189**

### Claudin 3 (CLDN3) Rabbit Polyclonal Antibody

#### Product data:

Product Type:	Primary Antibodies
Applications:	IHC, WB
Recommended Dilution:	WB: 500-2000 WB positive control: Human colon cancer tissue IHC: 25-100 Positive control: Human cervical cancer Predicted cell location: Cytoplasm, Cell membrane
Reactivity:	Human
Host:	Rabbit
Isotype:	IgG
Clonality:	Polyclonal
Immunogen:	Synthetic peptide corresponding to a region derived from 207-220 amino acids of Human claudin 3
Formulation:	PBS pH7.3, 0.05% NaN <sub>3</sub> , 50% glycerol
Concentration:	lot specific
Purification:	Antigen affinity purification
Conjugation:	Unconjugated
Storage:	Store at -20°C as received.
Stability:	Stable for 12 months from date of receipt.
Predicted Protein Size:	23 kDa
Gene Name:	claudin 3
Database Link:	<a href="#">NP_001297</a> <a href="#">Entrez Gene 1365 Human</a> <a href="#">O15551</a>



[View online »](#)

**Background:**

Tight junctions represent one mode of cell-to-cell adhesion in epithelial or endothelial cell sheets; forming continuous seals around cells and serving as a physical barrier to prevent solutes and water from passing freely through the paracellular space. These junctions are comprised of sets of continuous networking strands in the outwardly facing cytoplasmic leaflet; with complementary grooves in the inwardly facing extracytoplasmic leaflet. The protein encoded by this intronless gene; a member of the claudin family; is an integral membrane protein and a component of tight junction strands. It is also a low-affinity receptor for Clostridium perfringens enterotoxin; and shares aa sequence similarity with a putative apoptosis-related protein found in rat.

**Synonyms:**

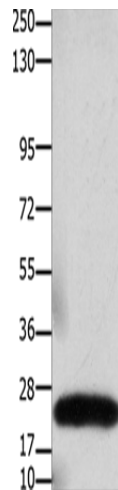
C7orf1; CPE-R2; CPETR2; HRVP1; RVP1

**Protein Families:**

Druggable Genome, Transmembrane

**Protein Pathways:**

Cell adhesion molecules (CAMs), Leukocyte transendothelial migration, Tight junction

**Product images:**

Gel: 10%SDS-PAGE

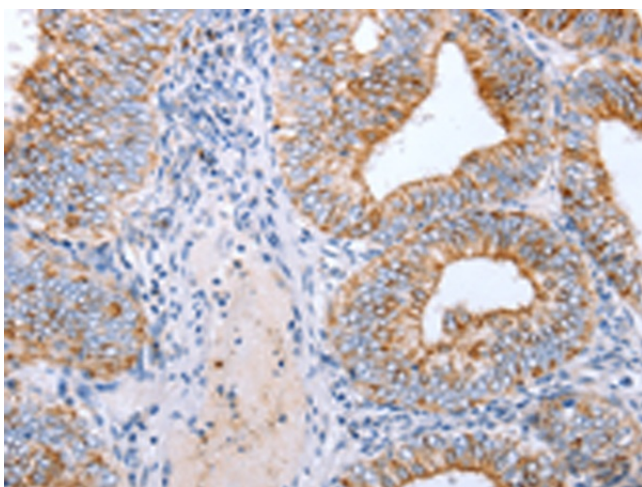
Lysate: 30 µg

Lane: Human colon cancer tissue

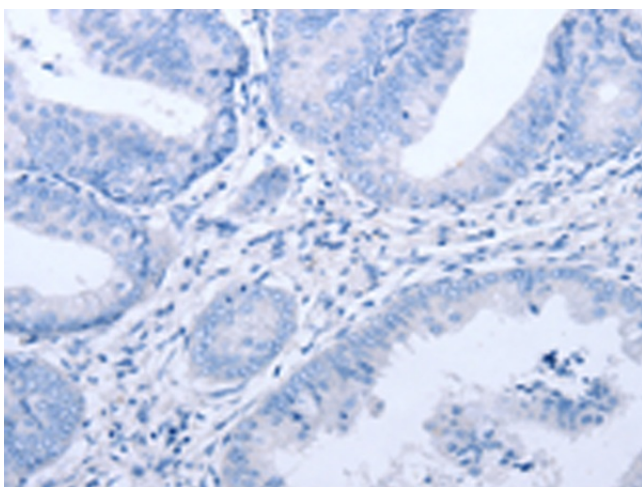
Primary antibody: TA323189 (CLDN3 Antibody) at dilution 1/550

Secondary antibody: Goat anti rabbit IgG at 1/8000 dilution

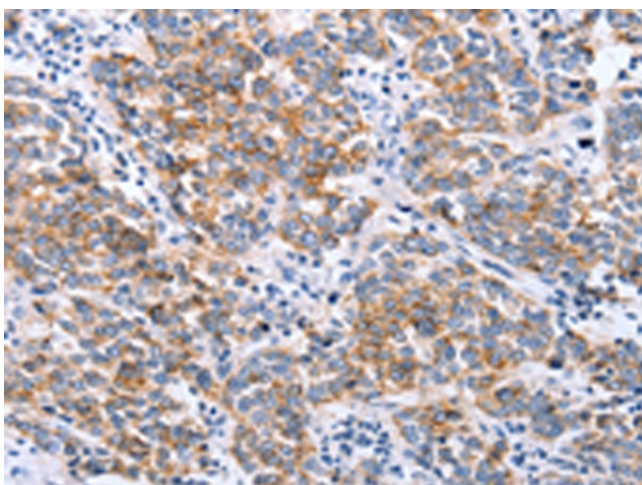
Exposure time: 20 seconds



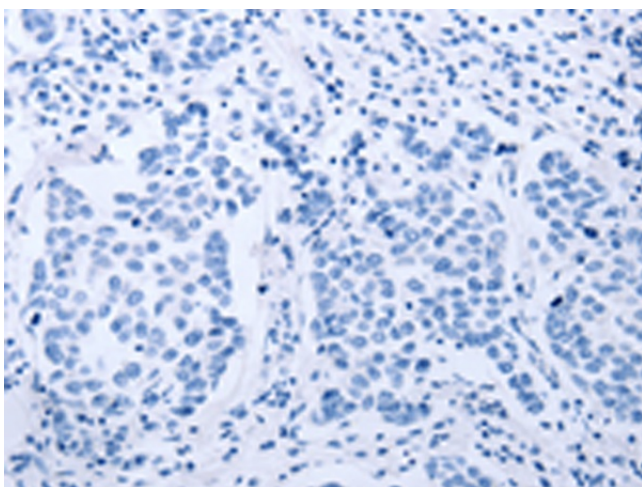
Immunohistochemistry of paraffin-embedded Human cervical cancer tissue using TA323189 (CLDN3 Antibody) at dilution 1/25 (Original magnification:  $\times 200$ )



Immunohistochemistry of paraffin-embedded Human cervical cancer tissue using TA323189 (CLDN3 Antibody) at dilution 1/25, treated with synthetic peptide. (Original magnification:  $\times 200$ )



Immunohistochemistry of paraffin-embedded Human breast cancer tissue using TA323189 (CLDN3 Antibody) at dilution 1/25 (Original magnification:  $\times 200$ )



Immunohistochemistry of paraffin-embedded Human breast cancer tissue using TA323189 (CLDN3 Antibody) at dilution 1/25, treated with synthetic peptide. (Original magnification:  $\times 200$ )