

## Product datasheet for **TA323186S**

### CRMP2 (DPYSL2) Rabbit Polyclonal Antibody

#### Product data:

Product Type:	Primary Antibodies
Applications:	IHC
Recommended Dilution:	IHC: 50-300 Positive control: Human liver cancer Predicted cell location: Cytoplasm
Reactivity:	Human, Mouse, Rat
Host:	Rabbit
Isotype:	IgG
Clonality:	Polyclonal
Immunogen:	Synthetic peptide corresponding to a region derived from 476-493 amino acids of Human dihydropyrimidinase-like 2
Formulation:	PBS pH7.3, 0.05% NaN <sub>3</sub> , 50% glycerol
Purification:	Antigen affinity purification
Conjugation:	Unconjugated
Storage:	Store at -20°C as received.
Stability:	Stable for 12 months from date of receipt.
Gene Name:	dihydropyrimidinase like 2
Database Link:	<a href="#">NP_001377</a> <a href="#">Entrez Gene 12934 Mouse</a> <a href="#">Entrez Gene 25416 Rat</a> <a href="#">Entrez Gene 1808 Human</a> <a href="#">Q16555</a>

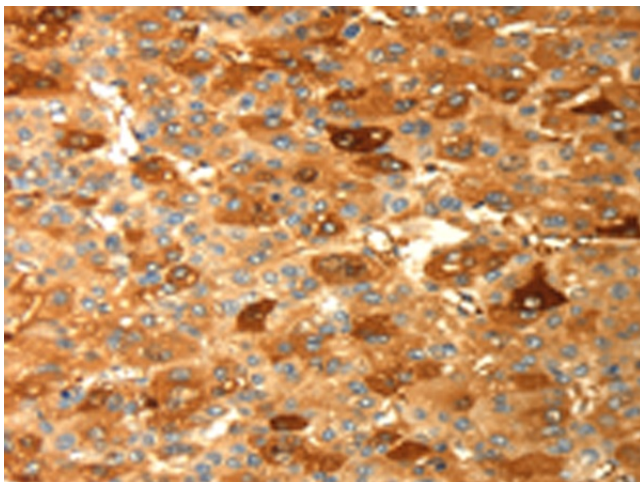
**Background:** This gene encodes a member of the collapsin response mediator protein family. Collapsin response mediator proteins form homo- and hetero-tetramers and facilitate neuron guidance; growth and polarity. The encoded protein promotes microtubule assembly and is required for Sema3A-mediated growth cone collapse; and also plays a role in synaptic signaling through interactions with calcium channels. This gene has been implicated in multiple neurological disorders; and hyperphosphorylation of the encoded protein may play a key role in the development of Alzheimer's disease. Alternatively spliced transcript variants encoding multiple isoforms have been observed for this gene.



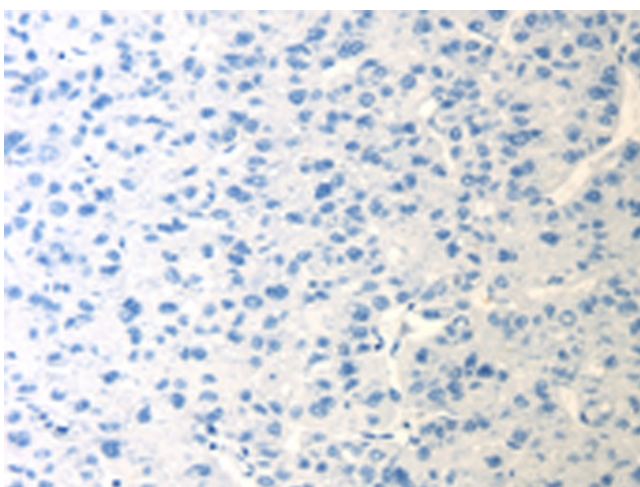
[View online »](#)

**Synonyms:** CRMP-2; CRMP2; DHPRP2; DRP-2; DRP2; N2A3; ULIP-2; ULIP2  
**Protein Families:** Druggable Genome  
**Protein Pathways:** Axon guidance

**Product images:**



Immunohistochemistry of paraffin-embedded Human liver cancer tissue using [TA323186] (DPYSL2 Antibody) at dilution 1/25 (Original magnification:  $\times 200$ )



Immunohistochemistry of paraffin-embedded Human liver cancer tissue using [TA323186] (DPYSL2 Antibody) at dilution 1/25, treated with synthetic peptide. (Original magnification:  $\times 200$ )