

Product datasheet for **TA323185**

CRMP2 (DPYSL2) Rabbit Polyclonal Antibody

Product data:

Product Type:	Primary Antibodies
Applications:	IHC, WB
Recommended Dilution:	WB: 200-1000 WB positive control: NIH/3T3 cells IHC: 25-100 Positive control: Human colon cancer Predicted cell location: Cytoplasm
Reactivity:	Human, Mouse, Rat
Host:	Rabbit
Isotype:	IgG
Clonality:	Polyclonal
Immunogen:	Synthetic peptide corresponding to a region derived from 476-493 amino acids of Human Collapsin response mediator protein 2
Formulation:	PBS pH7.3, 0.05% NaN ₃ , 50% glycerol
Concentration:	lot specific
Purification:	Antigen affinity purification
Conjugation:	Unconjugated
Storage:	Store at -20°C as received.
Stability:	Stable for 12 months from date of receipt.
Predicted Protein Size:	62 kDa
Gene Name:	dihydropyrimidinase like 2
Database Link:	NP_001377 Entrez Gene 12934 Mouse Entrez Gene 25416 Rat Entrez Gene 1808 Human Q16555



[View online »](#)

Background:

This gene encodes a member of the collapsin response mediator protein family. Collapsin response mediator proteins form homo- and hetero-tetramers and facilitate neuron guidance; growth and polarity. The encoded protein promotes microtubule assembly and is required for Sema3A-mediated growth cone collapse; and also plays a role in synaptic signaling through interactions with calcium channels. This gene has been implicated in multiple neurological disorders; and hyperphosphorylation of the encoded protein may play a key role in the development of Alzheimer's disease. Alternatively spliced transcript variants encoding multiple isoforms have been observed for this gene.

Synonyms:

CRMP-2; CRMP2; DHPRP2; DRP-2; DRP2; N2A3; ULIP-2; ULIP2

Protein Families:

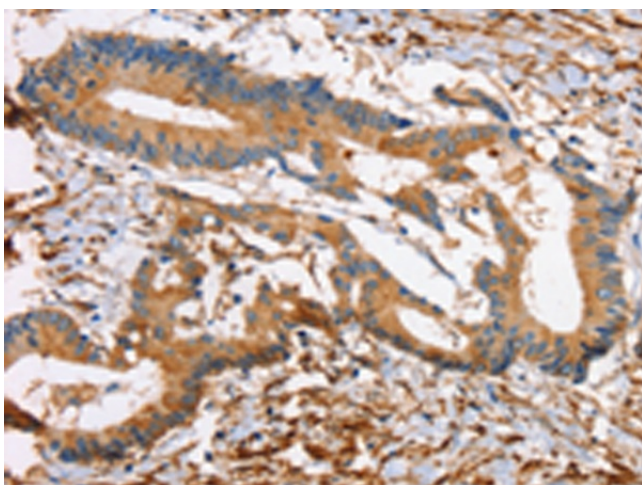
Druggable Genome

Protein Pathways:

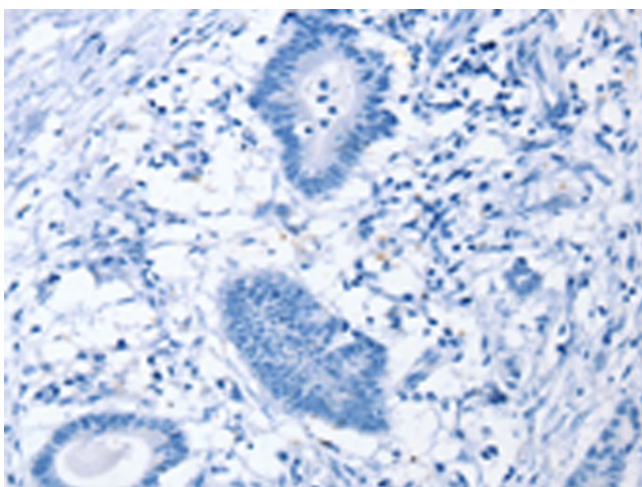
Axon guidance

Product images:

Gel: 8%SDS-PAGE
Lysate: 30 µg
Lane: NIH/3T3 cells
Primary antibody: TA323185 (DPYSL2 Antibody) at dilution 1/400
Secondary antibody: Goat anti rabbit IgG at 1/8000 dilution
Exposure time: 15 seconds



Immunohistochemistry of paraffin-embedded Human colon cancer tissue using TA323185 (DPYSL2 Antibody) at dilution 1/45 (Original magnification: ×200)



Immunohistochemistry of paraffin-embedded Human colon cancer tissue using TA323185 (DPYSL2 Antibody) at dilution 1/45, treated with synthetic peptide. (Original magnification: ×200)