

Product datasheet for **TA323183**

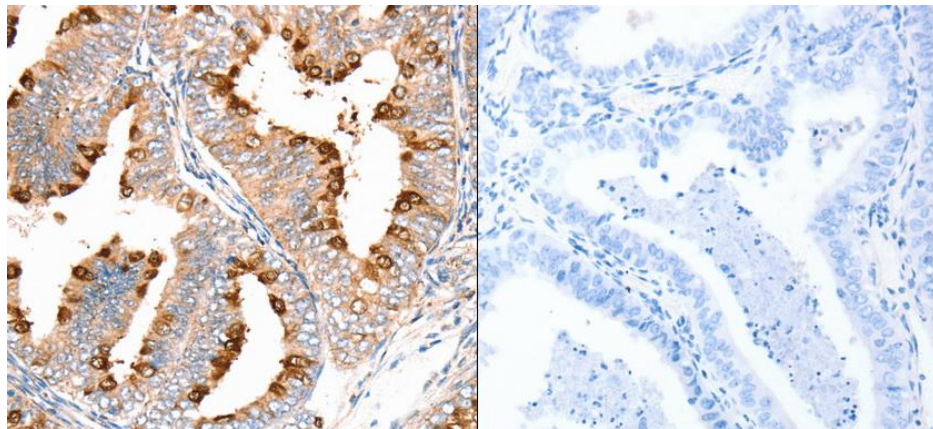
DNMT1 Rabbit Polyclonal Antibody

Product data:

Product Type:	Primary Antibodies
Applications:	IHC
Recommended Dilution:	ELISA: 1:500-5000, IHC: 1:25-100
Reactivity:	Human, Mouse, Rat
Host:	Rabbit
Isotype:	IgG
Clonality:	Polyclonal
Immunogen:	Synthetic peptide corresponding to a region derived from 637-650 amino acids of Human DNA (cytosine-5)-methyltransferase 1
Formulation:	PBS pH7.3, 0.05% NaN ₃ , 50% glycerol
Concentration:	lot specific
Purification:	Antigen affinity purification
Conjugation:	Unconjugated
Storage:	Store at -20°C as received.
Stability:	Stable for 12 months from date of receipt.
Gene Name:	DNA (cytosine-5-)-methyltransferase 1
Database Link:	NP_001370 Entrez Gene 13433 Mouse Entrez Gene 84350 Rat Entrez Gene 1786 Human P26358
Background:	DNA (cytosine-5-)-methyltransferase 1 has a role in the establishment and regulation of tissue-specific patterns of methylated cytosine residues. Aberrant methylation patterns are associated with certain human tumors and developmental abnormalities. Two transcript variants encoding different isoforms have been found for this gene.
Synonyms:	ADCADN; AIM; CXXC9; DNMT; HSN1E; m.HsaI; MCMT
Protein Families:	Druggable Genome, Transcription Factors
Protein Pathways:	Cysteine and methionine metabolism, Metabolic pathways



[View online »](#)

Product images:

Predicted cell location: Cytoplasm, Nucleus.
Positive control: Human cervical cancer tissue.
Recommended dilution: 1/25-100 The image on the left is immunohistochemistry of paraffin-embedded Human cervical cancer tissue using DNMT1 antibody at dilution 1/35, on the right is treated with the synthetic peptide. (Original magnification: x200)