

Product datasheet for **TA323180**

AKR1C1 Rabbit Polyclonal Antibody

Product data:

Product Type:	Primary Antibodies
Applications:	IHC
Recommended Dilution:	IHC: 25-100 Positive control: Human thyroid cancer Predicted cell location: Cytoplasm
Reactivity:	Human
Host:	Rabbit
Isotype:	IgG
Clonality:	Polyclonal
Immunogen:	Synthetic peptide corresponding to a region derived from 290-304 amino acids of human aldo-keto reductase family 1, member C1
Formulation:	PBS pH7.3, 0.05% NaN ₃ , 50% glycerol
Concentration:	lot specific
Purification:	Antigen affinity purification
Conjugation:	Unconjugated
Storage:	Store at -20°C as received.
Stability:	Stable for 12 months from date of receipt.
Gene Name:	aldo-keto reductase family 1, member C1
Database Link:	NP_001344 Entrez Gene 1645 Human Q04828
Background:	This gene encodes a member of the aldo/keto reductase superfamily; which consists of more than 40 known enzymes and proteins. These enzymes catalyze the conversion of aldehydes and ketones to their corresponding alcohols by utilizing NADH and/or NADPH as cofactors. The enzymes display overlapping but distinct substrate specificity. This enzyme catalyzes the reaction of progesterone to the inactive form 20-alpha-hydroxy-progesterone. This gene shares high sequence identity with three other gene members and is clustered with those three genes at chromosome 10p15-p14.?



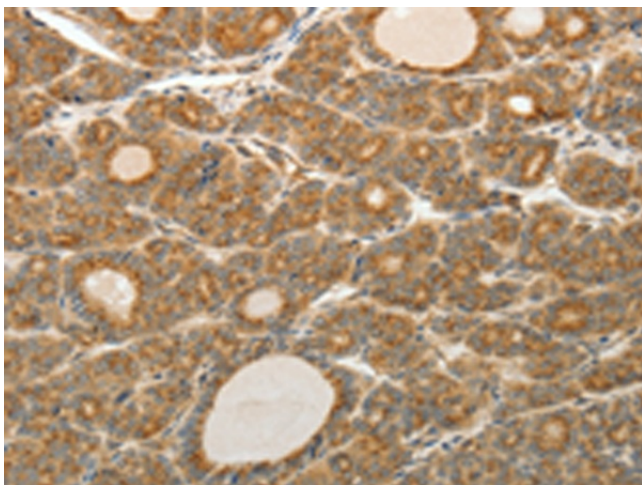
[View online »](#)

Synonyms: 2-ALPHA-HSD; 20-ALPHA-HSD; C9; DD1; DD2; DDH; DDH1; H-37; HAKRC; HBAB; MBAB

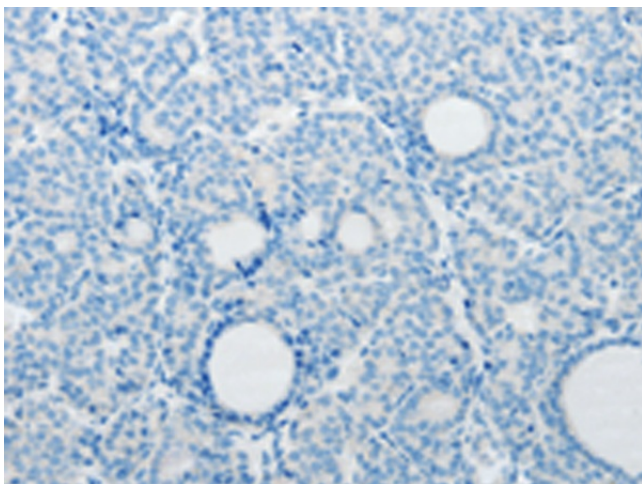
Protein Families: Druggable Genome

Protein Pathways: Metabolism of xenobiotics by cytochrome P450

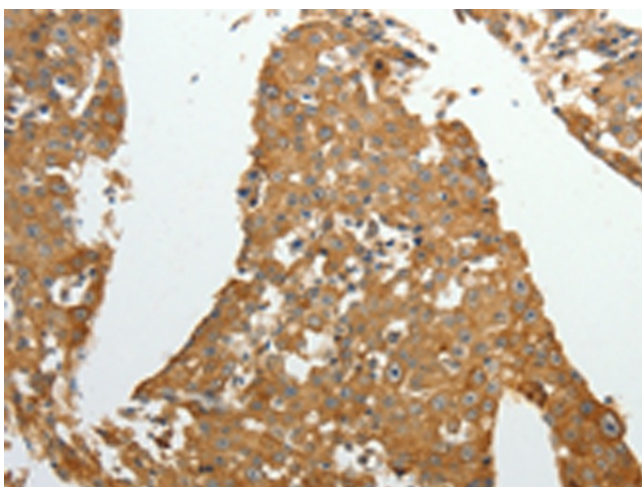
Product images:



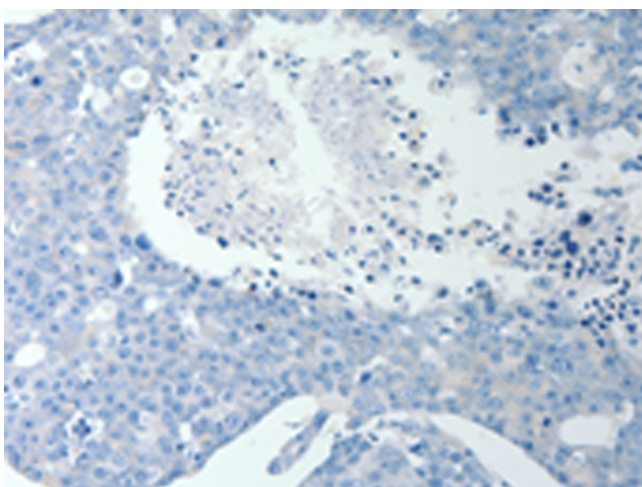
Immunohistochemistry of paraffin-embedded Human thyroid cancer tissue using TA323180 (AKR1C1 Antibody) at dilution 1/20 (Original magnification: ×200)



Immunohistochemistry of paraffin-embedded Human thyroid cancer tissue using TA323180 (AKR1C1 Antibody) at dilution 1/20, treated with synthetic peptide. (Original magnification: ×200)



Immunohistochemistry of paraffin-embedded Human breast cancer tissue using TA323180 (AKR1C1 Antibody) at dilution 1/20 (Original magnification: $\times 200$)



Immunohistochemistry of paraffin-embedded Human breast cancer tissue using TA323180 (AKR1C1 Antibody) at dilution 1/20, treated with synthetic peptide. (Original magnification: $\times 200$)