

Product datasheet for **TA323177S**

EDA Rabbit Polyclonal Antibody

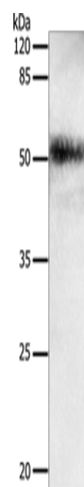
Product data:

Product Type:	Primary Antibodies
Applications:	IHC, WB
Recommended Dilution:	WB: 500-2000 WB positive control: Human lung cancer tissue IHC: 25-100 Positive control: Human prostate cancer Predicted cell location: Cell membrane
Reactivity:	Human, Mouse
Host:	Rabbit
Isotype:	IgG
Clonality:	Polyclonal
Immunogen:	Synthetic peptide corresponding to a region derived from 284-298 amino acids of Human Ectodysplasin-A
Formulation:	PBS pH7.3, 0.05% NaN ₃ , 50% glycerol
Purification:	Antigen affinity purification
Conjugation:	Unconjugated
Storage:	Store at -20°C as received.
Stability:	Stable for 12 months from date of receipt.
Predicted Protein Size:	49 kDa
Gene Name:	ectodysplasin A
Database Link:	NP_001390 Entrez Gene 13607 Mouse Entrez Gene 1896 Human Q92838

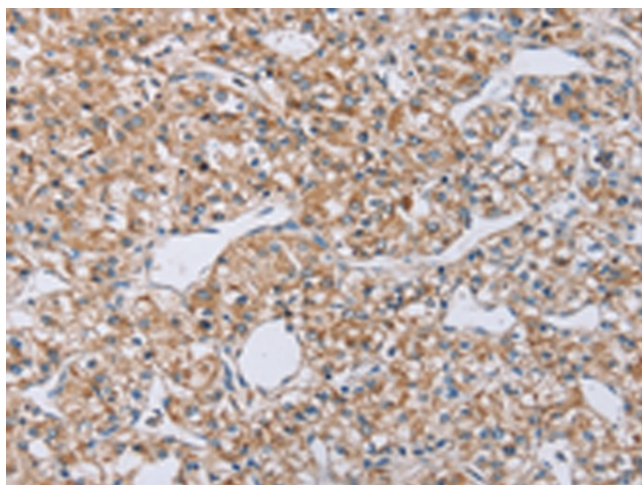


[View online »](#)

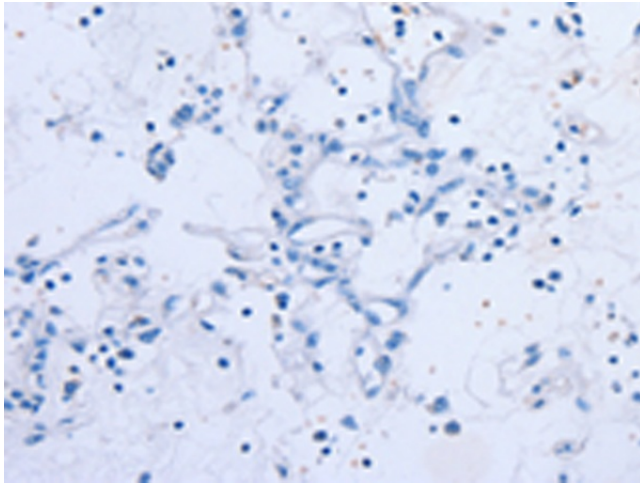
Background:	The protein encoded by this gene is a type II membrane protein that can be cleaved by furin to produce a secreted form. The encoded protein; which belongs to the tumor necrosis factor family; acts as a homotrimer and may be involved in cell-cell signaling during the development of ectodermal organs. Defects in this gene are a cause of ectodermal dysplasia; anhidrotic; which is also known as X-linked hypohidrotic ectodermal dysplasia. Several transcript variants encoding many different isoforms have been found for this gene.
Synonyms:	ECTD1; ED1; ED1-A1; ED1-A2; EDA-A1; EDA-A2; EDA1; EDA2; HED; HED1; ODT1; STHAGX1; XHED; XLHED
Protein Families:	Druggable Genome, Secreted Protein, Transmembrane
Protein Pathways:	Cytokine-cytokine receptor interaction

Product images:

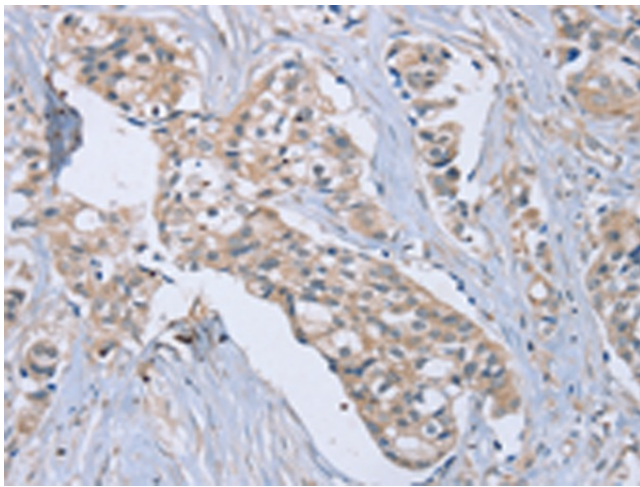
Gel: 10%SDS-PAGE
Lysate: 30 μ g
Lane: Human lung cancer tissue
Primary antibody: [TA323177] (EDA Antibody) at dilution 1/650
Secondary antibody: Goat anti rabbit IgG at 1/8000 dilution
Exposure time: 5 minutes



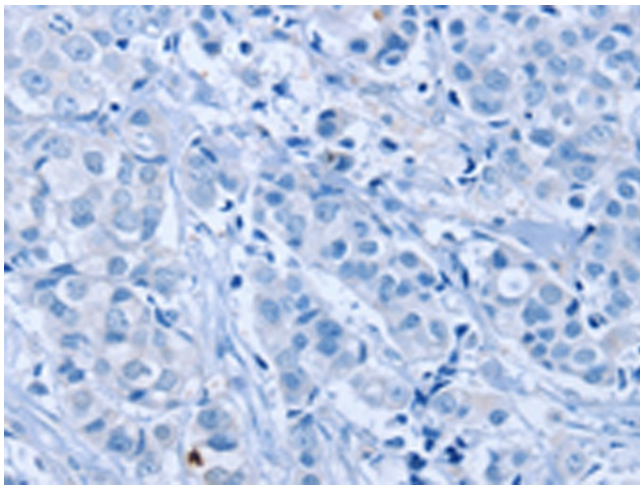
Immunohistochemistry of paraffin-embedded Human prostate cancer tissue using [TA323177] (EDA Antibody) at dilution 1/40 (Original magnification: \times 200)



Immunohistochemistry of paraffin-embedded Human prostate cancer tissue using [TA323177] (EDA Antibody) at dilution 1/40, treated with synthetic peptide. (Original magnification: x200)



Immunohistochemistry of paraffin-embedded Human breast cancer tissue using [TA323177] (EDA Antibody) at dilution 1/40 (Original magnification: x200)



Immunohistochemistry of paraffin-embedded Human breast cancer tissue using [TA323177] (EDA Antibody) at dilution 1/40, treated with synthetic peptide. (Original magnification: x200)