

## Product datasheet for **TA323177**

### EDA Rabbit Polyclonal Antibody

#### Product data:

Product Type:	Primary Antibodies
Applications:	IHC, WB
Recommended Dilution:	WB: 500-2000 WB positive control: Human lung cancer tissue IHC: 25-100 Positive control: Human prostate cancer Predicted cell location: Cell membrane
Reactivity:	Human, Mouse
Host:	Rabbit
Isotype:	IgG
Clonality:	Polyclonal
Immunogen:	Synthetic peptide corresponding to a region derived from 284-298 amino acids of Human Ectodysplasin-A
Formulation:	PBS pH7.3, 0.05% NaN <sub>3</sub> , 50% glycerol
Concentration:	lot specific
Purification:	Antigen affinity purification
Conjugation:	Unconjugated
Storage:	Store at -20°C as received.
Stability:	Stable for 12 months from date of receipt.
Predicted Protein Size:	49 kDa
Gene Name:	ectodysplasin A
Database Link:	<a href="#">NP_001390</a> <a href="#">Entrez Gene 13607 Mouse</a> <a href="#">Entrez Gene 1896 Human</a> <a href="#">Q92838</a>



[View online »](#)

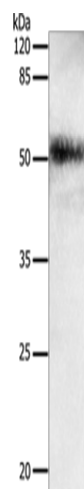
**Background:** The protein encoded by this gene is a type II membrane protein that can be cleaved by furin to produce a secreted form. The encoded protein; which belongs to the tumor necrosis factor family; acts as a homotrimer and may be involved in cell-cell signaling during the development of ectodermal organs. Defects in this gene are a cause of ectodermal dysplasia; anhidrotic; which is also known as X-linked hypohidrotic ectodermal dysplasia. Several transcript variants encoding many different isoforms have been found for this gene.

**Synonyms:** ECTD1; ED1; ED1-A1; ED1-A2; EDA-A1; EDA-A2; EDA1; EDA2; HED; HED1; ODT1; STHAGX1; XHED; XLHED

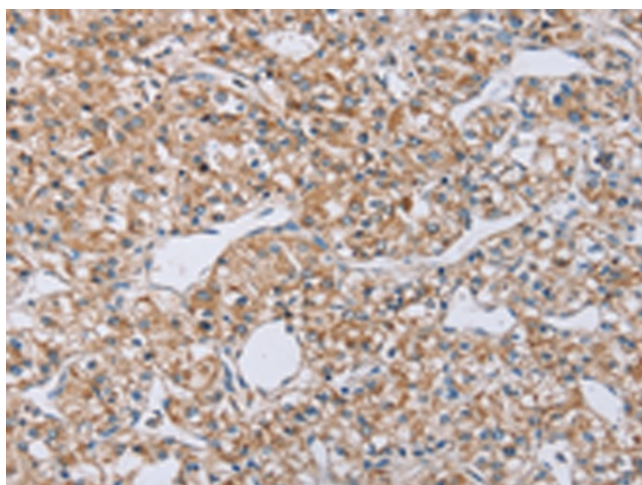
**Protein Families:** Druggable Genome, Secreted Protein, Transmembrane

**Protein Pathways:** Cytokine-cytokine receptor interaction

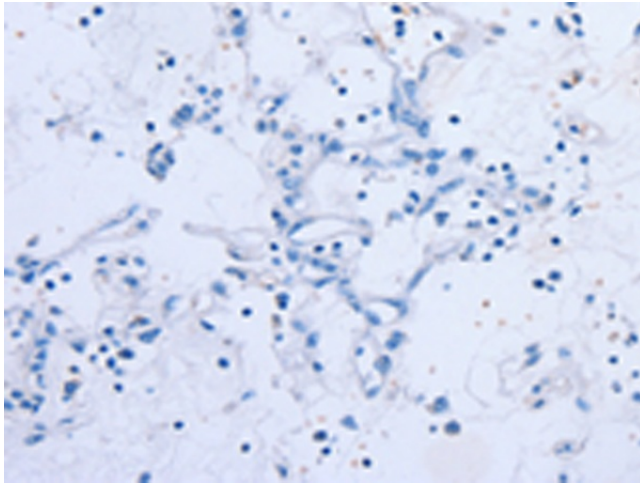
### Product images:



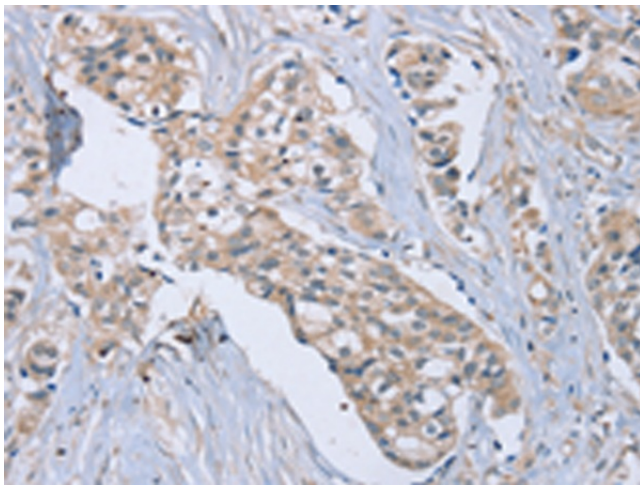
Gel: 10%SDS-PAGE  
Lysate: 30 µg  
Lane: Human lung cancer tissue  
Primary antibody: TA323177 (EDA Antibody) at dilution 1/650  
Secondary antibody: Goat anti rabbit IgG at 1/8000 dilution  
Exposure time: 5 minutes



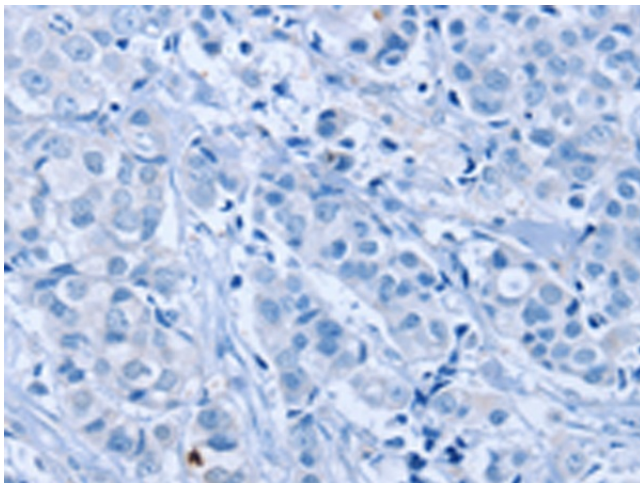
Immunohistochemistry of paraffin-embedded Human prostate cancer tissue using TA323177 (EDA Antibody) at dilution 1/40 (Original magnification: x200)



Immunohistochemistry of paraffin-embedded Human prostate cancer tissue using TA323177 (EDA Antibody) at dilution 1/40, treated with synthetic peptide. (Original magnification: ×200)



Immunohistochemistry of paraffin-embedded Human breast cancer tissue using TA323177 (EDA Antibody) at dilution 1/40 (Original magnification: ×200)



Immunohistochemistry of paraffin-embedded Human breast cancer tissue using TA323177 (EDA Antibody) at dilution 1/40, treated with synthetic peptide. (Original magnification: ×200)