

## Product datasheet for **TA323176**

### EEF1G Rabbit Polyclonal Antibody

#### Product data:

Product Type:	Primary Antibodies
Applications:	IHC, WB
Recommended Dilution:	WB: 500-2000 WB positive control: Human liver cancer tissue IHC: 50-200 Positive control: Human colon cancer Predicted cell location: Cytoplasm
Reactivity:	Human, Mouse, Rat
Host:	Rabbit
Isotype:	IgG
Clonality:	Polyclonal
Immunogen:	Fusion protein corresponding to a region derived from 276-437 amino acids of human eukaryotic translation elongation factor 1 gamma
Formulation:	PBS pH7.3, 0.05% NaN <sub>3</sub> , 50% glycerol
Concentration:	lot specific
Purification:	Antigen affinity purification
Conjugation:	Unconjugated
Storage:	Store at -20°C as received.
Stability:	Stable for 12 months from date of receipt.
Predicted Protein Size:	50 kDa
Gene Name:	eukaryotic translation elongation factor 1 gamma
Database Link:	<a href="#">NP_001395</a> <a href="#">Entrez Gene 67160 Mouse</a> <a href="#">Entrez Gene 293725 Rat</a> <a href="#">Entrez Gene 1937 Human</a> <a href="#">P26641</a>



[View online »](#)

**Background:**

This gene encodes a subunit of the elongation factor-1 complex; which is responsible for the enzymatic delivery of aminoacyl tRNAs to the ribosome. This subunit contains an N-terminal glutathione transferase domain; which may be involved in regulating the assembly of multisubunit complexes containing this elongation factor and aminoacyl-tRNA synthetases. Probably plays a role in anchoring the complex to other cellular components.

**Synonyms:**

EF1G; GIG35

**Product images:**

Gel: 8%SDS-PAGE

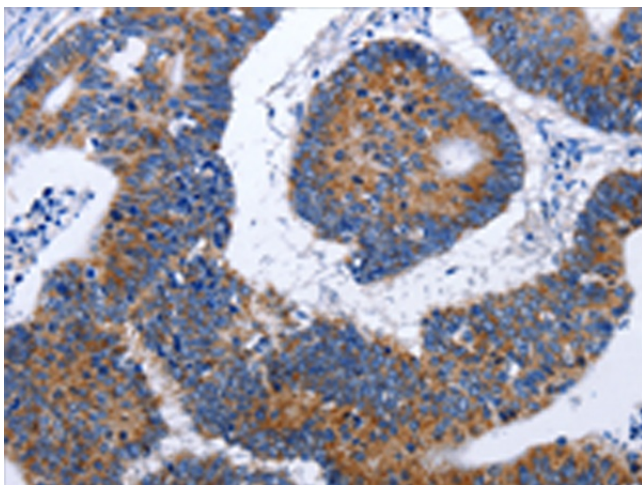
Lysate: 40 µg

Lane: Human liver cancer tissue

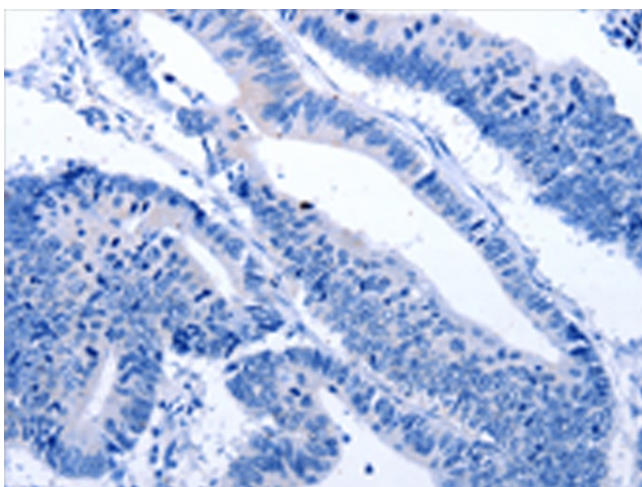
Primary antibody: TA323176 (EEF1G Antibody) at dilution 1/800

Secondary antibody: Goat anti rabbit IgG at 1/8000 dilution

Exposure time: 20 seconds



Immunohistochemistry of paraffin-embedded Human colon cancer tissue using TA323176 (EEF1G Antibody) at dilution 1/50 (Original magnification: ×200)



Immunohistochemistry of paraffin-embedded Human colon cancer tissue using TA323176 (EEF1G Antibody) at dilution 1/50, treated with fusion protein. (Original magnification:  $\times 200$ )