

## Product datasheet for **TA323175**

### CELSR2 Rabbit Polyclonal Antibody

#### Product data:

Product Type:	Primary Antibodies
Applications:	IHC
Recommended Dilution:	IHC: 25-100 Positive control: Human brain Predicted cell location: Cytoplasm
Reactivity:	Human, Mouse, Rat
Host:	Rabbit
Isotype:	IgG
Clonality:	Polyclonal
Immunogen:	Synthetic peptide corresponding to a region derived from 2623-2639 amino acids of human cadherin, EGF LAG seven-pass G-type receptor 2
Formulation:	PBS pH7.3, 0.05% NaN <sub>3</sub> , 50% glycerol
Concentration:	lot specific
Purification:	Antigen affinity purification
Conjugation:	Unconjugated
Storage:	Store at -20°C as received.
Stability:	Stable for 12 months from date of receipt.
Gene Name:	cadherin EGF LAG seven-pass G-type receptor 2
Database Link:	<a href="#">NP_001399</a> <a href="#">Entrez Gene 53883 Mouse</a> <a href="#">Entrez Gene 83465 Rat</a> <a href="#">Entrez Gene 1952 Human</a> <a href="#">Q9HCU4</a>



[View online »](#)

**Background:**

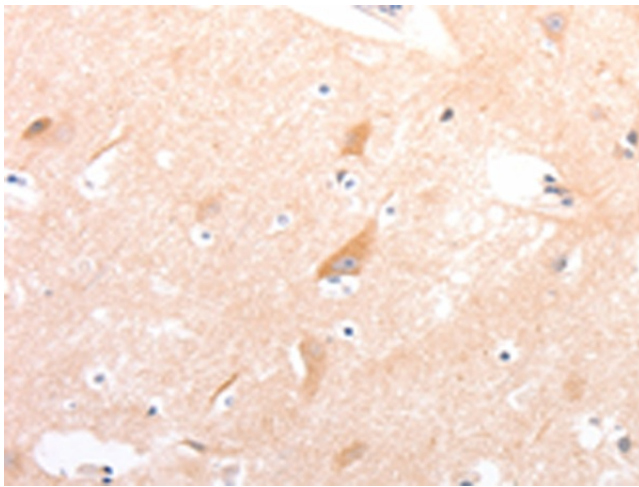
The protein encoded by this gene is a member of the flamingo subfamily; part of the cadherin superfamily. The flamingo subfamily consists of nonclassic-type cadherins; a subpopulation that does not interact with catenins. The flamingo cadherins are located at the plasma membrane and have nine cadherin domains; seven epidermal growth factor-like repeats and two laminin A G-type repeats in their ectodomain. They also have seven transmembrane domains; a characteristic unique to this subfamily. It is postulated that these proteins are receptors involved in contact-mediated communication; with cadherin domains acting as homophilic binding regions and the EGF-like domains involved in cell adhesion and receptor-ligand interactions. The specific function of this particular member has not been determined.

**Synonyms:**

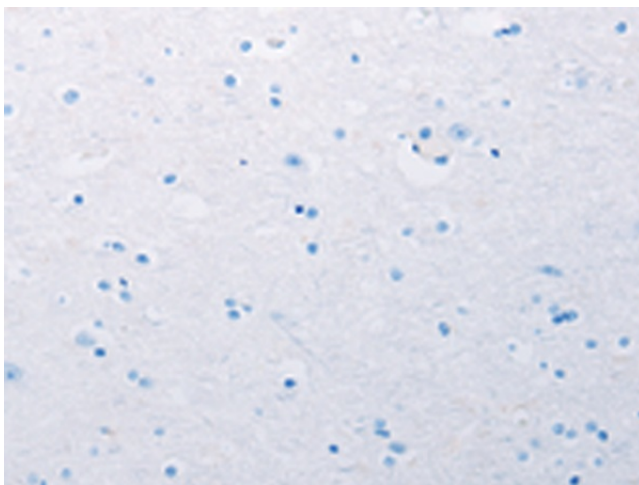
ADGRC2; CDHF10; EGFL2; Flamingo1; MEGF3

**Protein Families:**

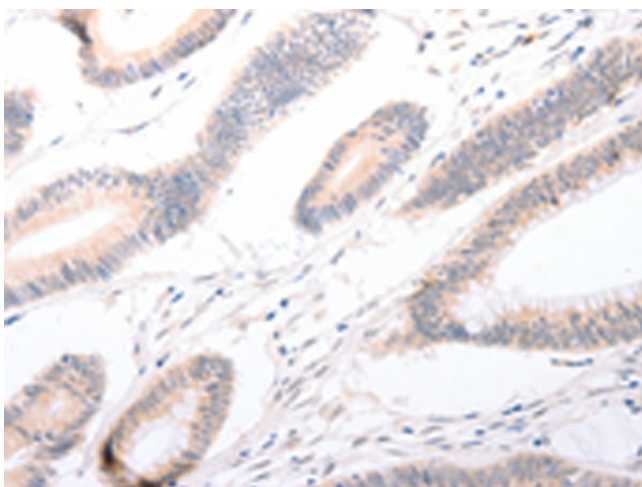
Druggable Genome, Transmembrane

**Product images:**

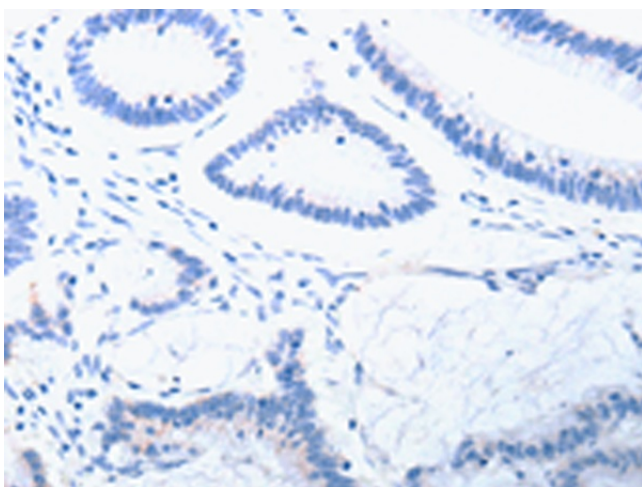
Immunohistochemistry of paraffin-embedded Human brain tissue using TA323175 (CELSR2 Antibody) at dilution 1/50 (Original magnification: ×200)



Immunohistochemistry of paraffin-embedded Human brain tissue using TA323175 (CELSR2 Antibody) at dilution 1/50, treated with synthetic peptide. (Original magnification: ×200)



Immunohistochemistry of paraffin-embedded Human colon cancer tissue using TA323175 (CELSR2 Antibody) at dilution 1/50 (Original magnification:  $\times 200$ )



Immunohistochemistry of paraffin-embedded Human colon cancer tissue using TA323175 (CELSR2 Antibody) at dilution 1/50, treated with synthetic peptide. (Original magnification:  $\times 200$ )