

Product datasheet for **TA323171**

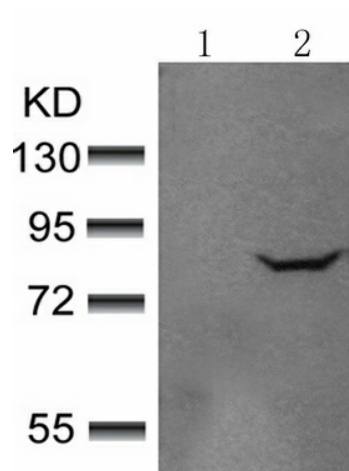
EIF4B Rabbit Polyclonal Antibody

Product data:

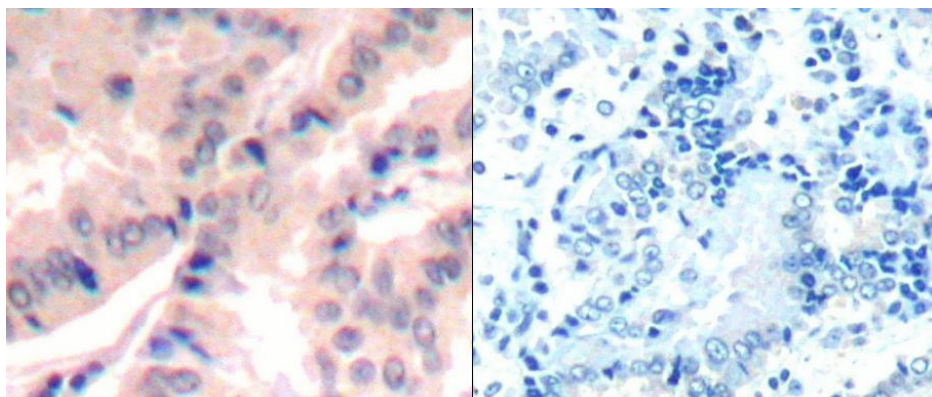
Product Type:	Primary Antibodies
Applications:	IHC, WB
Recommended Dilution:	WB: 1:500-1000, IHC: 1:50-100
Reactivity:	Human, Mouse
Modifications:	Phospho-specific
Host:	Rabbit
Isotype:	IgG
Clonality:	Polyclonal
Immunogen:	Peptide sequence around phosphorylation site of Serine 422 (T-G-S(p)-E-S) derived from Human eIF4B.
Formulation:	PBS pH7.3, 0.05% NaN ₃ , 50% glycerol
Concentration:	lot specific
Purification:	Antigen affinity purification
Conjugation:	Unconjugated
Storage:	Store at -20°C as received.
Stability:	Stable for 12 months from date of receipt.
Predicted Protein Size:	80 kDa
Gene Name:	eukaryotic translation initiation factor 4B
Database Link:	NP_060977 Entrez Gene 55378 Human Entrez Gene 1975 Human P23588
Background:	Required for the binding of mRNA to ribosomes. Functions in close association with EIF4-F and EIF4-A. Binds near the 5'-terminal cap of mRNA in presence of EIF-4F and ATP. Promotes the ATPase activity and the ATP-dependent RNA unwinding activity of both EIF4-A and EIF4-F.
Synonyms:	EIF-4B; PRO1843



[View online »](#)

Product images:

Predicted band size: 80 kDa. Positive control: Hela cells treated with EGF lysate. Recommended dilution: 1/ 500-1000. (Gel: 8%SDS-PAGE Lane 1: Hela cells untreated with EGF lysate Lane 2: Hela cells treated with EGF lysate Lysates: 30 ug per lane Primary antibody: 1/500 dilution Secondary antibody: Goat anti Rabbit IgG - H&L (HRP) at 1/10000 dilution Exposure time: 1 minute)



Predicted cell location: Cytoplasm. Positive control: Human lung carcinoma tissue. Recommended dilution: 1/ 50-100 The image on the left is immunohistochemistry of paraffin-embedded human lung carcinoma tissue using EIF4B (phospho-Ser422) antibody at dilution 1/50, on the right is treated with the synthetic peptide. (Original magnification: x200)