

## Product datasheet for **TA323165**

### HFH4 (FOXJ1) Rabbit Polyclonal Antibody

#### Product data:

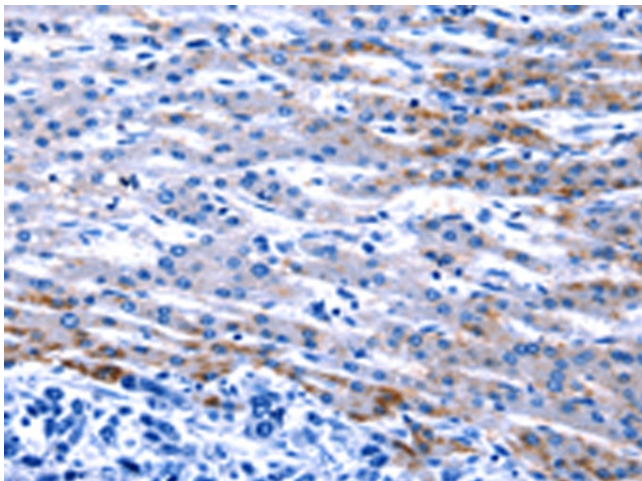
|                       |   |
|-----------------------|---|
| Product Type:         | Primary Antibodies  |
| Applications:         | IHC   |
| Recommended Dilution: | IHC: 20-100<br>Positive control: Human liver cancer<br>Predicted cell location: Cytoplasm   |
| Reactivity:           | Human, Mouse, Rat   |
| Host:                 | Rabbit  |
| Isotype:              | IgG   |
| Clonality:            | Polyclonal  |
| Immunogen:            | Synthetic peptide corresponding to a region derived from 400-414 amino acids of Human forkhead box J1   |
| Formulation:          | PBS pH7.3, 0.05% NaN <sub>3</sub> , 50% glycerol  |
| Concentration:        | lot specific  |
| Purification:         | Antigen affinity purification   |
| Conjugation:          | Unconjugated  |
| Storage:              | Store at -20°C as received.   |
| Stability:            | Stable for 12 months from date of receipt.  |
| Gene Name:            | forkhead box J1   |
| Database Link:        | <a href="#">NP_001445</a><br><a href="#">Entrez Gene 15223 MouseEntrez Gene 116557 RatEntrez Gene 2302 Human Q92949</a>   |
| Background:           | Forkhead box protein J1 is a protein that in humans is encoded by the FOXJ1 gene. This gene encodes a member of the forkhead family of transcription factors. Similar genes in zebrafish and mouse have been shown to regulate the transcription of genes that control the production of motile cilia. The mouse ortholog also functions in the determination of left-right asymmetry. Polymorphisms in this gene are associated with systemic lupus erythematosus and allergic rhinitis. |
| Synonyms:             | FKHL13; HFH-4; HFH4   |



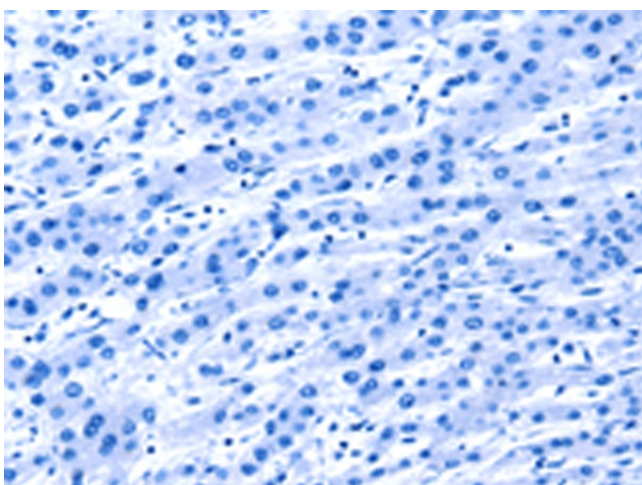
[View online »](#)

Protein Families: Transcription Factors

### Product images:



Immunohistochemistry of paraffin-embedded Human liver cancer tissue using TA323165 (FOXJ1 Antibody) at dilution 1/20 (Original magnification: ×200)



Immunohistochemistry of paraffin-embedded Human liver cancer tissue using TA323165 (FOXJ1 Antibody) at dilution 1/20, treated with synthetic peptide. (Original magnification: ×200)