

Product datasheet for **TA323162**

GDI1 Rabbit Polyclonal Antibody

Product data:

Product Type:	Primary Antibodies
Applications:	IHC, WB
Recommended Dilution:	WB: 200-1000 WB positive control: Human fetal brain tissue IHC: 25-50 Positive control: Human brain Predicted cell location: Cytoplasm
Reactivity:	Human, Mouse, Rat
Host:	Rabbit
Isotype:	IgG
Clonality:	Polyclonal
Immunogen:	Fusion protein corresponding to a region derived from 11-209 amino acids of Human Rab GDP dissociation inhibitor alpha
Formulation:	PBS pH7.3, 0.05% NaN ₃ , 50% glycerol
Concentration:	lot specific
Purification:	Antigen affinity purification
Conjugation:	Unconjugated
Storage:	Store at -20°C as received.
Stability:	Stable for 12 months from date of receipt.
Predicted Protein Size:	51 kDa
Gene Name:	GDP dissociation inhibitor 1
Database Link:	NP_001484 Entrez Gene 14567 Mouse Entrez Gene 25183 Rat Entrez Gene 2664 Human P31150



[View online »](#)

Background:

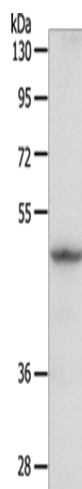
GDP dissociation inhibitors are proteins that regulate the GDP-GTP exchange reaction of members of the rab family, small GTP-binding proteins of the ras superfamily, that are involved in vesicular trafficking of molecules between cellular organelles. GDIs slow the rate of dissociation of GDP from rab proteins and release GDP from membrane-bound rabs. GDI1 is expressed primarily in neural and sensory tissues. Mutations in GDI1 have been linked to X-linked nonspecific mental retardation. [provided by RefSeq, Jul 2008]

Synonyms:

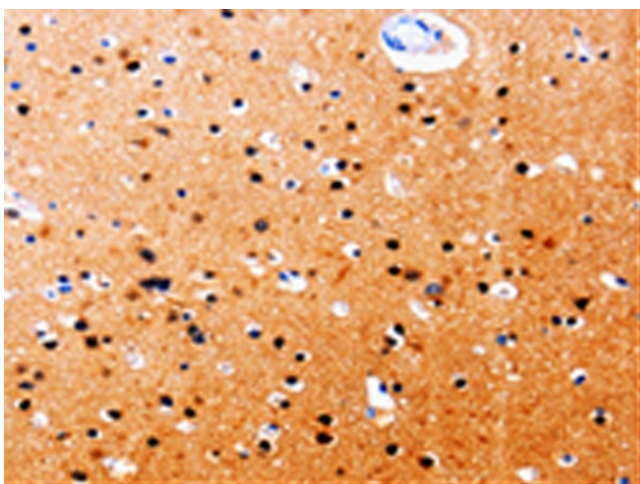
1A; GDIL; MRX41; MRX48; OPHN2; RABGD1A; RABGDIA; XAP-4

Protein Families:

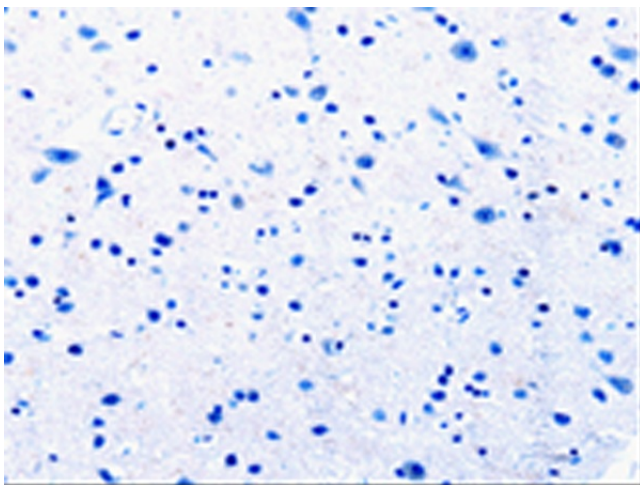
Druggable Genome

Product images:

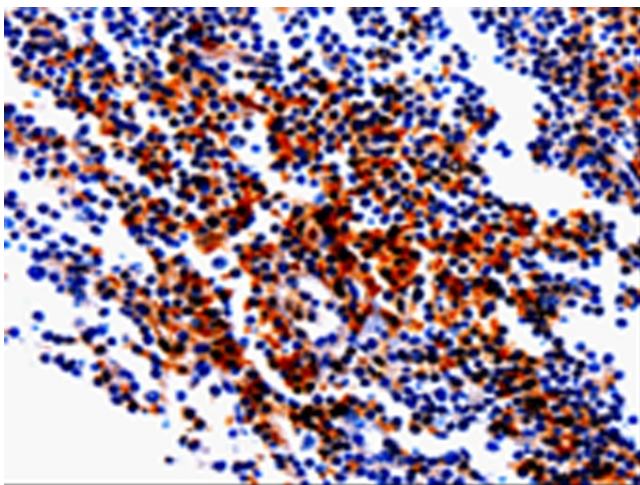
Gel: 8%SDS-PAGE
Lysate: 40 µg
Lane: Human fetal brain tissue
Primary antibody: TA323162 (GDI1 Antibody) at dilution 1/400
Secondary antibody: Goat anti rabbit IgG at 1/8000 dilution
Exposure time: 3 seconds



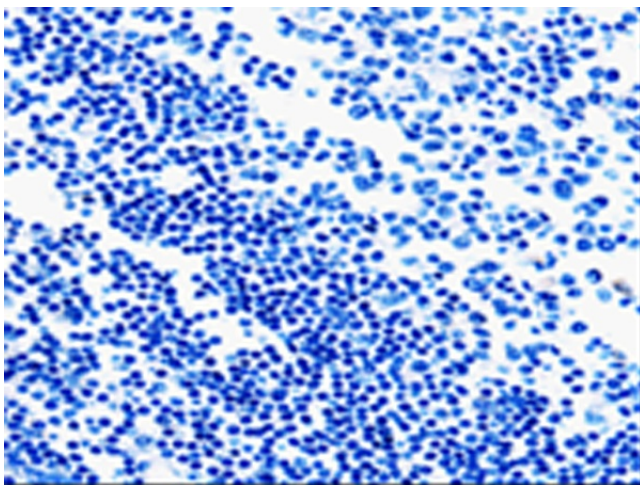
Immunohistochemistry of paraffin-embedded Human brain tissue using TA323162 (GDI1 Antibody) at dilution 1/20 (Original magnification: ×200)



Immunohistochemistry of paraffin-embedded Human brain tissue using TA323162 (GDI1 Antibody) at dilution 1/20, treated with fusion protein. (Original magnification: $\times 200$)



Immunohistochemistry of paraffin-embedded Human tonsil tissue using TA323162 (GDI1 Antibody) at dilution 1/20 (Original magnification: $\times 200$)



Immunohistochemistry of paraffin-embedded Human tonsil tissue using TA323162 (GDI1 Antibody) at dilution 1/20, treated with fusion protein. (Original magnification: $\times 200$)