

Product datasheet for **TA323161**

GDI1 Rabbit Polyclonal Antibody

Product data:

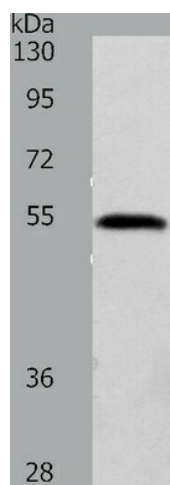
Product Type:	Primary Antibodies
Applications:	IHC, WB
Recommended Dilution:	ELISA: 1:500-2000, WB: 1:200-1000, IHC: 1:25-50
Reactivity:	Human, Mouse, Rat
Host:	Rabbit
Isotype:	IgG
Clonality:	Polyclonal
Immunogen:	Fusion protein corresponding to a region derived from 11-209 amino acids of Human Rab GDP dissociation inhibitor alpha
Formulation:	PBS pH7.3, 0.05% NaN ₃ , 50% glycerol
Concentration:	lot specific
Purification:	Antigen affinity purification
Conjugation:	Unconjugated
Storage:	Store at -20°C as received.
Stability:	Stable for 12 months from date of receipt.
Predicted Protein Size:	51 kDa
Gene Name:	GDP dissociation inhibitor 1
Database Link:	NP_001484 Entrez Gene 14567 MouseEntrez Gene 25183 RatEntrez Gene 2664 Human P31150
Background:	GDP dissociation inhibitors are proteins that regulate the GDP-GTP exchange reaction of members of the rab family, small GTP-binding proteins of the ras superfamily, that are involved in vesicular trafficking of molecules between cellular organelles. GDIs slow the rate of dissociation of GDP from rab proteins and release GDP from membrane-bound rabs. GDI1 is expressed primarily in neural and sensory tissues. Mutations in GDI1 have been linked to X-linked nonspecific mental retardation.
Synonyms:	1A; GDIL; MRX41; MRX48; OPHN2; RABGD1A; RABGDIA; XAP-4



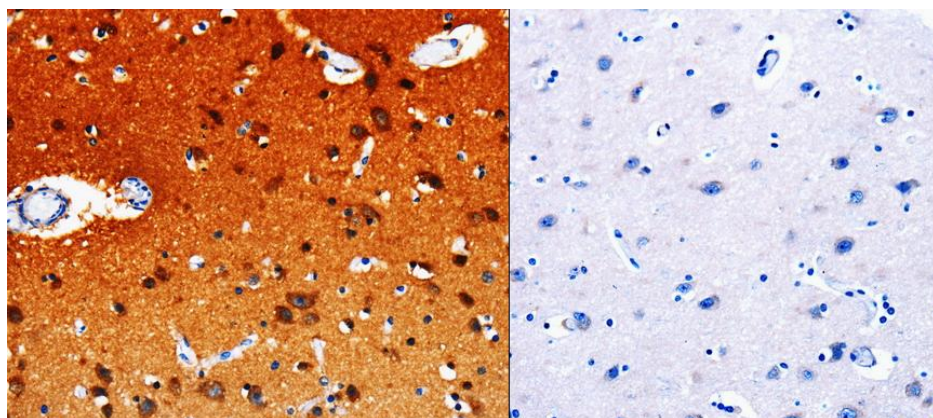
[View online »](#)

Protein Families: Druggable Genome

Product images:



Predicted band size: 51kDa. Positive control: Jurkat cell lysate. Recommended dilution: 1/200-1000. (Gel: 8%SDS-PAGE Lysate: 40 ug Primary antibody: 1/300 dilution Secondary antibody: Donkey anti Rabbit IgG - H&L (HRP) at 1/3000 dilution Exposure time: 10 seconds)



Predicted cell location: Cytoplasm. Positive control: Human brain tissue. Recommended dilution: 1/25-50 The image on the left is immunohistochemistry of paraffin-embedded Human brain tissue using GDI1 antibody at dilution 1/20, on the right is treated with the fusion protein. (Original magnification: x 200)