

## Product datasheet for **TA323160**

### GDF1 Rabbit Polyclonal Antibody

#### Product data:

Product Type:	Primary Antibodies
Applications:	WB
Recommended Dilution:	WB: 200-1000 WB positive control: Mouse brain tissue
Reactivity:	Human, Mouse
Host:	Rabbit
Isotype:	IgG
Clonality:	Polyclonal
Immunogen:	Synthetic peptide corresponding to a region derived from 82-98 amino acids of Human growth differentiation factor 1
Formulation:	PBS pH7.3, 0.05% NaN <sub>3</sub> , 50% glycerol
Concentration:	lot specific
Purification:	Antigen affinity purification
Conjugation:	Unconjugated
Storage:	Store at -20°C as received.
Stability:	Stable for 12 months from date of receipt.
Predicted Protein Size:	39 kDa
Gene Name:	growth differentiation factor 1
Database Link:	<a href="#">NP_001483</a> <a href="#">Entrez Gene 14559 Mouse</a> <a href="#">Entrez Gene 2657 Human</a> <a href="#">P27539</a>



[View online »](#)

**Background:**

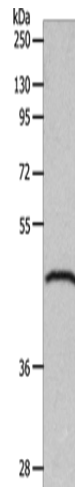
This gene encodes a member of the bone morphogenetic protein (BMP) family and the TGF-beta superfamily. This group of proteins is characterized by a polybasic proteolytic processing site that is cleaved to produce a mature protein containing seven conserved cysteine residues. The members of this family are regulators of cell growth and differentiation in both embryonic and adult tissues. Studies in rodents suggest that this protein is involved in the establishment of left-right asymmetry in early embryogenesis and in neural development in later embryogenesis. This protein is transcribed from a bicistronic mRNA that also encodes the longevity assurance gene.

**Synonyms:**

DORV; DTGA3; RAI

**Protein Families:**

Druggable Genome, Secreted Protein

**Product images:**

Gel: 10%SDS-PAGE

Lysate: 40 µg

Lane: Mouse brain tissue

Primary antibody: TA323160 (GDF1 Antibody) at dilution 1/200

Secondary antibody: Goat anti rabbit IgG at 1/8000 dilution

Exposure time: 1 minute