

Product datasheet for **TA323159S**

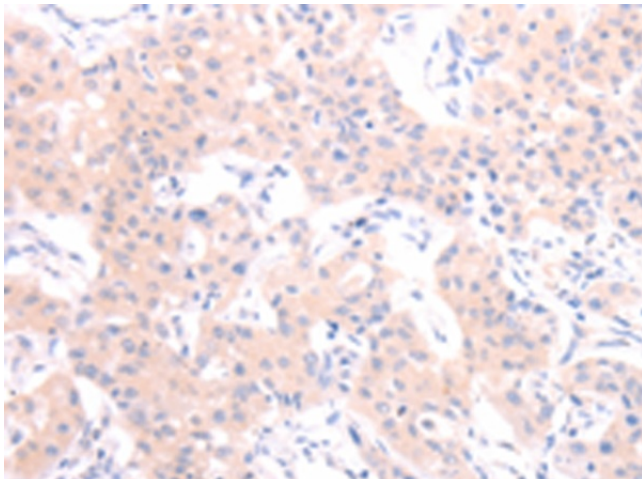
Orexin (HCRT) Rabbit Polyclonal Antibody

Product data:

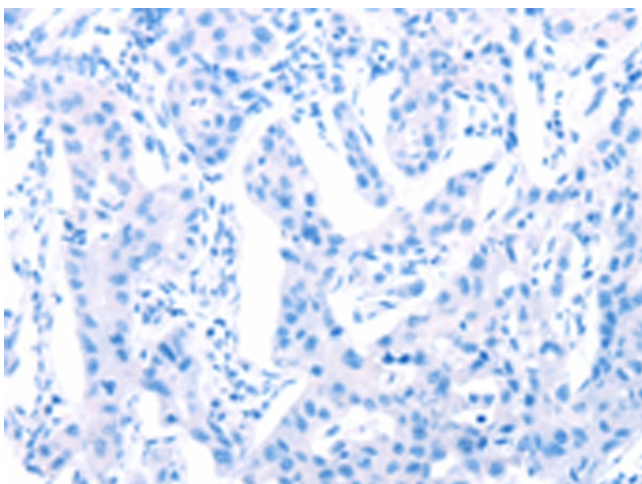
Product Type:	Primary Antibodies
Applications:	IHC
Recommended Dilution:	IHC: 25-100 Positive control: Human lung cancer Predicted cell location: Cytoplasm
Reactivity:	Human, Mouse, Rat
Host:	Rabbit
Isotype:	IgG
Clonality:	Polyclonal
Immunogen:	Synthetic peptide corresponding to a region derived from 2-15 amino acids of human hypocretin (orexin) neuropeptide precursor
Formulation:	PBS pH7.3, 0.05% NaN ₃ , 50% glycerol
Purification:	Antigen affinity purification
Conjugation:	Unconjugated
Storage:	Store at -20°C as received.
Stability:	Stable for 12 months from date of receipt.
Gene Name:	hypocretin (orexin) neuropeptide precursor
Database Link:	NP_001515 Entrez Gene 15171 Mouse Entrez Gene 25723 Rat Entrez Gene 3060 Human O43612
Background:	This gene encodes a hypothalamic neuropeptide precursor protein that gives rise to two mature neuropeptides; orexin A and orexin B; by proteolytic processing. Orexin A and orexin B; which bind to orphan G-protein coupled receptors HCRTR1 and HCRTR2; function in the regulation of sleep and arousal. This neuropeptide arrangement may also play a role in feeding behavior; metabolism; and homeostasis.
Synonyms:	NRCLP1; OX; PPOX
Protein Families:	Druggable Genome, Transmembrane



[View online »](#)

Product images:

Immunohistochemistry of paraffin-embedded Human lung cancer tissue using [TA323159] (HCRT/pan Orexin Antibody) at dilution 1/20 (Original magnification: ×200)



Immunohistochemistry of paraffin-embedded Human lung cancer tissue using [TA323159] (HCRT/pan Orexin Antibody) at dilution 1/20, treated with synthetic peptide. (Original magnification: ×200)