

Product datasheet for **TA323158**

HDAC2 Rabbit Polyclonal Antibody

Product data:

Product Type:	Primary Antibodies
Applications:	IHC
Recommended Dilution:	IHC: 25-100 Positive control: Human ovarian cancer Predicted cell location: Nucleus
Reactivity:	Human, Mouse
Host:	Rabbit
Isotype:	IgG
Clonality:	Polyclonal
Immunogen:	Synthetic peptide corresponding to a region derived from 474-488 amino acids of Human histone deacetylase 2
Formulation:	PBS pH7.3, 0.05% NaN ₃ , 50% glycerol
Concentration:	lot specific
Purification:	Antigen affinity purification
Conjugation:	Unconjugated
Storage:	Store at -20°C as received.
Stability:	Stable for 12 months from date of receipt.
Gene Name:	histone deacetylase 2
Database Link:	NP_001518 Entrez Gene 15182 Mouse Entrez Gene 3066 Human Q92769

Background: This gene product belongs to the histone deacetylase family. Histone deacetylases act via the formation of large multiprotein complexes; and are responsible for the deacetylation of lysine residues at the N-terminal regions of core histones (H2A; H2B; H3 and H4). This protein forms transcriptional repressor complexes by associating with many different proteins; including YY1; a mammalian zinc-finger transcription factor. Thus; it plays an important role in transcriptional regulation; cell cycle progression and developmental events. Alternative splicing results in multiple transcript variants.



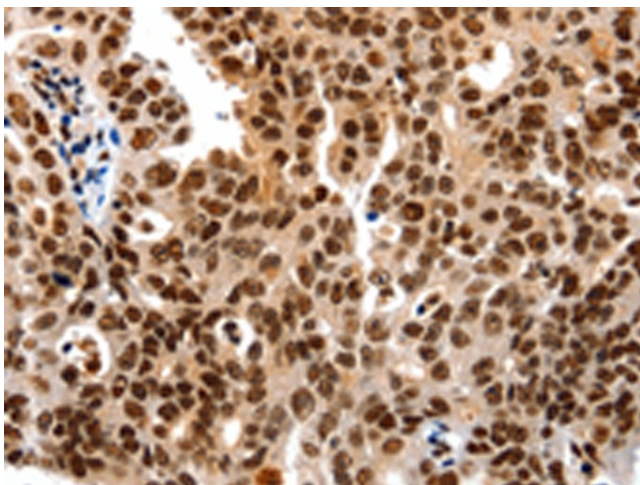
[View online »](#)

Synonyms: HD2; RPD3; YAF1

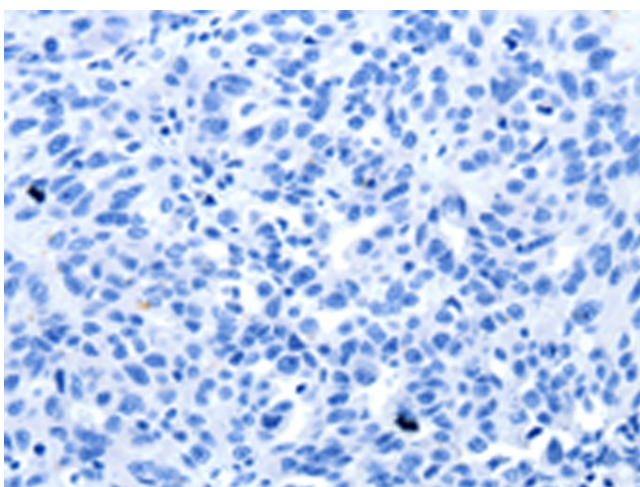
Protein Families: Druggable Genome, Stem cell - Pluripotency, Transcription Factors

Protein Pathways: Cell cycle, Chronic myeloid leukemia, Huntington's disease, Notch signaling pathway, Pathways in cancer

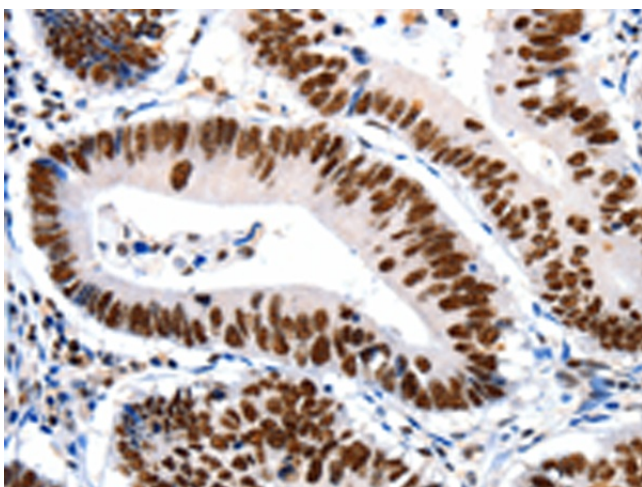
Product images:



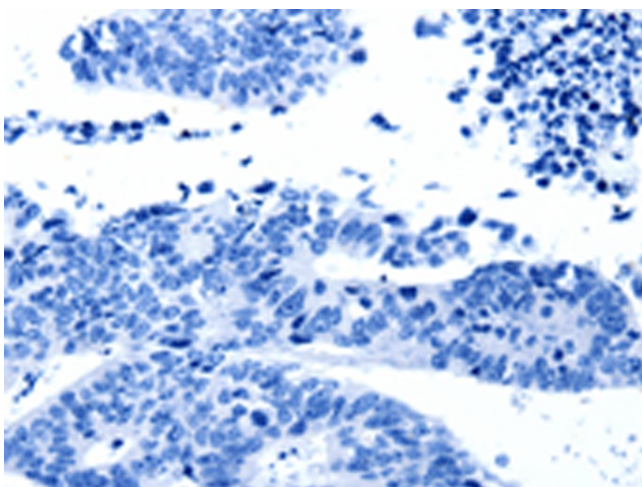
Immunohistochemistry of paraffin-embedded Human ovarian cancer tissue using TA323158 (HDAC2 Antibody) at dilution 1/25 (Original magnification: $\times 200$)



Immunohistochemistry of paraffin-embedded Human ovarian cancer tissue using TA323158 (HDAC2 Antibody) at dilution 1/25, treated with synthetic peptide. (Original magnification: $\times 200$)



Immunohistochemistry of paraffin-embedded Human colon cancer tissue using TA323158 (HDAC2 Antibody) at dilution 1/25 (Original magnification: $\times 200$)



Immunohistochemistry of paraffin-embedded Human colon cancer tissue using TA323158 (HDAC2 Antibody) at dilution 1/25, treated with synthetic peptide. (Original magnification: $\times 200$)