

Product datasheet for **TA323152S**

HSPB2 Rabbit Polyclonal Antibody

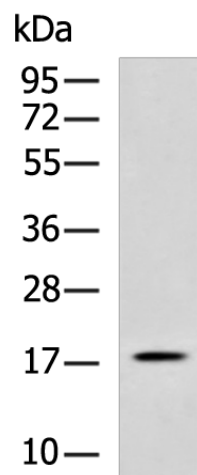
Product data:

Product Type:	Primary Antibodies
Applications:	IHC, WB
Recommended Dilution:	WB: 500-2000 WB positive control: Human heart tissue lysate IHC: 100-200 Positive control: Human colorectal cancer Predicted cell location: Nucleus
Reactivity:	Human, Mouse, Rat
Host:	Rabbit
Isotype:	IgG
Clonality:	Polyclonal
Immunogen:	Full length fusion protein
Formulation:	PBS pH7.3, 0.05% NaN ₃ , 50% glycerol
Purification:	Antigen affinity purification
Conjugation:	Unconjugated
Storage:	Store at -20°C as received.
Stability:	Stable for 12 months from date of receipt.
Gene Name:	heat shock protein family B (small) member 2
Database Link:	NP_001532 Entrez Gene 69253 Mouse Entrez Gene 161476 Rat Entrez Gene 3316 Human Q16082
Background:	Heat shock protein beta-2 is a protein that in humans is encoded by the HSPB2 gene. Alpha-B-crystallin is a member of the alpha-crystallin/small heat-shock protein (HSP) family and under various neuropathologic conditions accumulates in reactive astrocytes and degenerating neurons. In the 5-prime flanking region of the CRYAB gene on 11q22-q23; where a constitutive DNase I hypersensitive site is located HSPB2 has been shown to interact with TRAF6; HSPB8; Myotonic dystrophy protein kinase and CRYAB.
Synonyms:	Hs.78846; HSP27; LOH11CR1K; MKBP

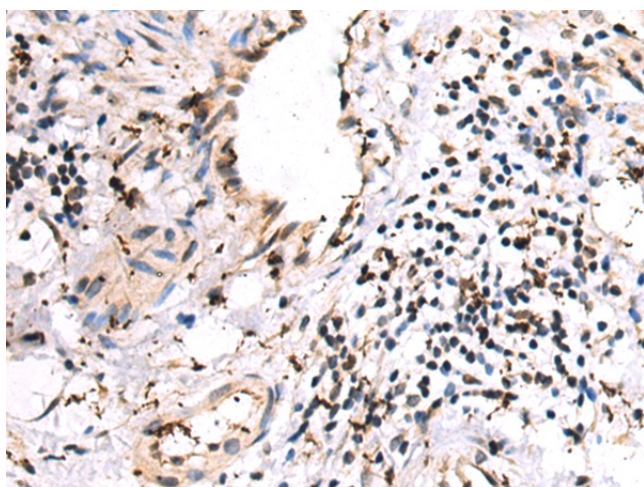


[View online »](#)

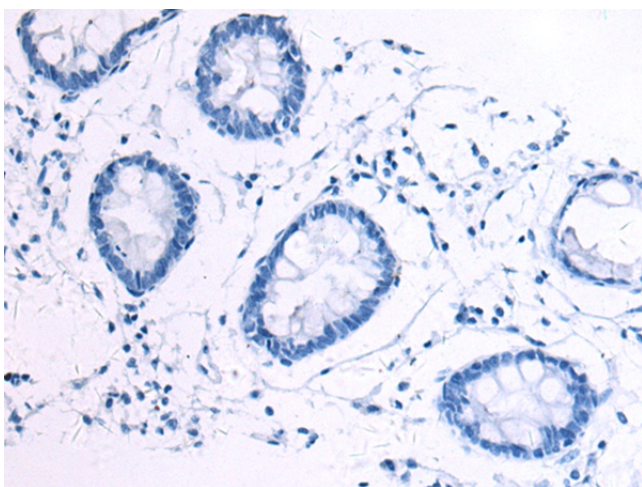
Product images:



Gel: 8%SDS-PAGE
Lysate: 40 μ g
Lane: Human heart tissue lysate
Primary antibody: [TA323152] (HSPB2 Antibody) at dilution 1/800
Secondary antibody: Goat anti rabbit IgG at 1/5000 dilution
Exposure time: 1 minute



Immunohistochemistry of paraffin-embedded Human colorectal cancer tissue using [TA323152] (HSPB2 Antibody) at dilution 1/110 (Original magnification: \times 200)



Immunohistochemistry of paraffin-embedded Human colorectal cancer tissue using [TA323152] (HSPB2 Antibody) at dilution 1/110, treated with fusion protein. (Original magnification: $\times 200$)