

Product datasheet for **TA323151**

IGFBP7 Rabbit Polyclonal Antibody

Product data:

Product Type:	Primary Antibodies
Applications:	IHC, WB
Recommended Dilution:	WB: 500-2000 WB positive control: Mouse brain tissue IHC: 10-50 Positive control: Human breast cancer Predicted cell location: Cytoplasm
Reactivity:	Human, Mouse
Host:	Rabbit
Isotype:	IgG
Clonality:	Polyclonal
Immunogen:	Synthetic peptide corresponding to a region derived from 270-282 amino acids of Human insulin-like growth factor binding protein 7
Formulation:	PBS pH7.3, 0.05% NaN ₃ , 50% glycerol
Concentration:	lot specific
Purification:	Antigen affinity purification
Conjugation:	Unconjugated
Storage:	Store at -20°C as received.
Stability:	Stable for 12 months from date of receipt.
Predicted Protein Size:	29 kDa
Gene Name:	insulin like growth factor binding protein 7
Database Link:	NP_001544 Entrez Gene 29817 Mouse Entrez Gene 3490 Human Q16270



[View online »](#)

Background:

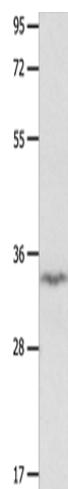
This gene encodes a member of the insulin-like growth factor (IGF)-binding protein (IGFBP) family. IGFBPs bind IGFs with high affinity; and regulate IGF availability in body fluids and tissues and modulate IGF binding to its receptors. This protein binds IGF-I and IGF-II with relatively low affinity; and belongs to a subfamily of low-affinity IGFBPs. It also stimulates prostacyclin production and cell adhesion. Alternatively spliced transcript variants encoding different isoforms have been described for this gene; and one variant has been associated with retinal arterial macroaneurysm

Synonyms:

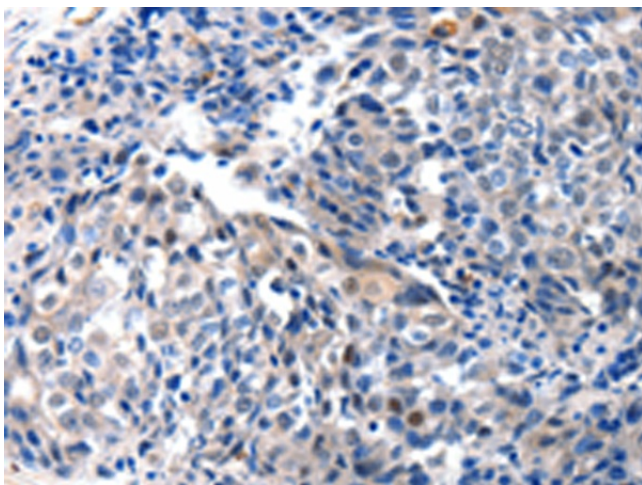
AGM; FSTL2; IBP-7; IGFBP-7; IGFBP-7v; IGFBPRP1; MAC25; PSF; RAMSVPS; TAF

Protein Families:

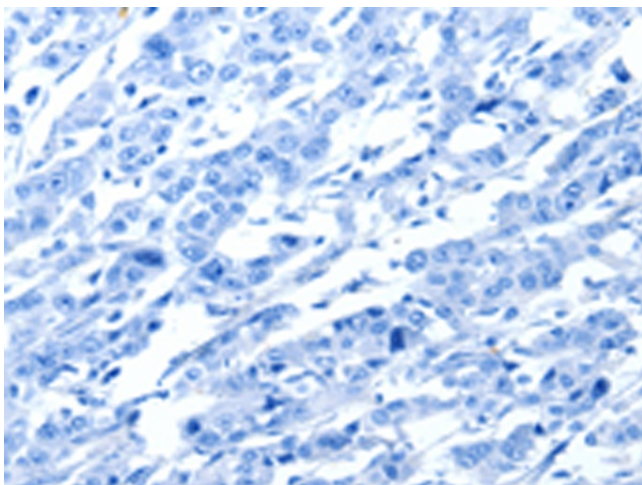
Secreted Protein

Product images:

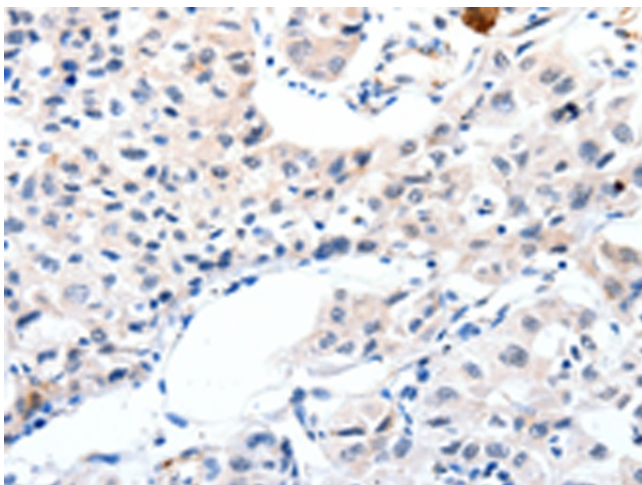
Gel: 10%SDS-PAGE
Lysate: 40 µg
Lane: Mouse brain tissue
Primary antibody: TA323151 (IGFBP7 Antibody) at dilution 1/400
Secondary antibody: Goat anti rabbit IgG at 1/8000 dilution
Exposure time: 1 minute



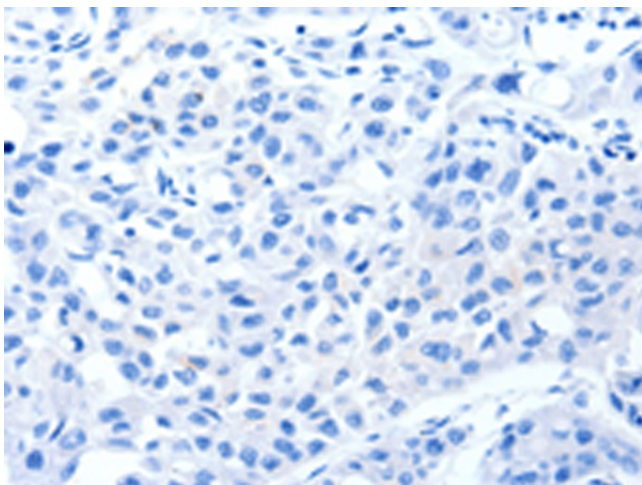
Immunohistochemistry of paraffin-embedded Human breast cancer tissue using TA323151 (IGFBP7 Antibody) at dilution 1/25 (Original magnification: ×200)



Immunohistochemistry of paraffin-embedded Human breast cancer tissue using TA323151 (IGFBP7 Antibody) at dilution 1/25, treated with synthetic peptide. (Original magnification: ×200)



Immunohistochemistry of paraffin-embedded Human lung cancer tissue using TA323151 (IGFBP7 Antibody) at dilution 1/25 (Original magnification: ×200)



Immunohistochemistry of paraffin-embedded Human lung cancer tissue using TA323151 (IGFBP7 Antibody) at dilution 1/25, treated with synthetic peptide. (Original magnification: ×200)