

## Product datasheet for **TA323148**

### IGFBP4 Rabbit Polyclonal Antibody

#### Product data:

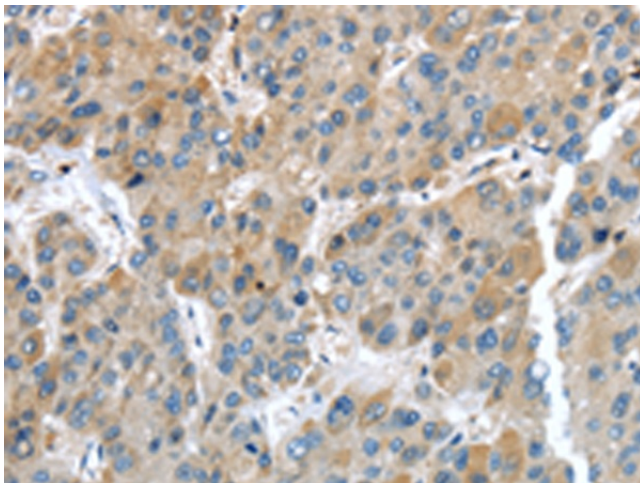
Product Type:	Primary Antibodies
Applications:	IHC
Recommended Dilution:	IHC: 25-100 Positive control: Human liver cancer Predicted cell location: Secreted
Reactivity:	Human, Mouse, Rat
Host:	Rabbit
Isotype:	IgG
Clonality:	Polyclonal
Immunogen:	Fusion protein corresponding to a region derived from 22-258 amino acids of human insulin-like growth factor binding protein 4
Formulation:	PBS pH7.3, 0.05% NaN <sub>3</sub> , 50% glycerol
Concentration:	lot specific
Purification:	Antigen affinity purification
Conjugation:	Unconjugated
Storage:	Store at -20°C as received.
Stability:	Stable for 12 months from date of receipt.
Predicted Protein Size:	28 kDa
Gene Name:	insulin like growth factor binding protein 4
Database Link:	<a href="#">NP_001543</a> <a href="#">Entrez Gene 16010 Mouse</a> <a href="#">Entrez Gene 360622 Rat</a> <a href="#">Entrez Gene 3487 Human</a> <a href="#">P22692</a>
Background:	This gene is a member of the insulin-like growth factor binding protein (IGFBP) family and encodes a protein with an IGFBP domain and a thyroglobulin type-I domain. The protein binds both insulin-like growth factors (IGFs) I and II and circulates in the plasma in both glycosylated and non-glycosylated forms. Binding of this protein prolongs the half-life of the IGFs and alters their interaction with cell surface receptors.?
Synonyms:	BP-4; HT29-IGFBP; IBP4; IGFBP-4



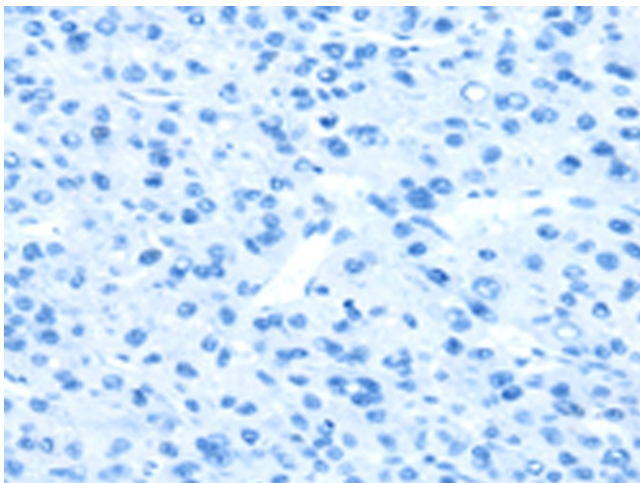
[View online »](#)

Protein Families: Secreted Protein

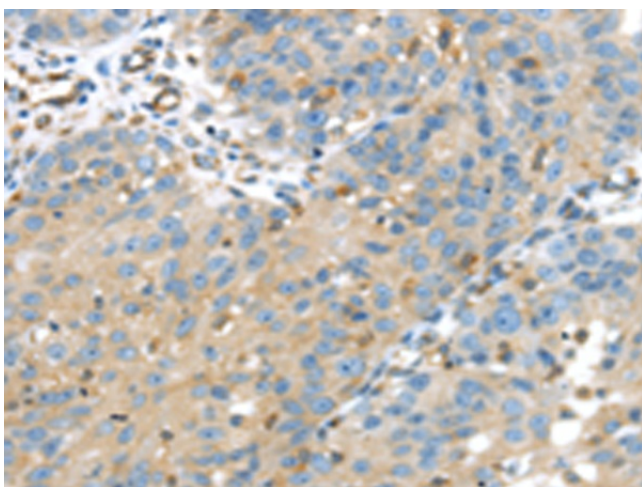
### Product images:



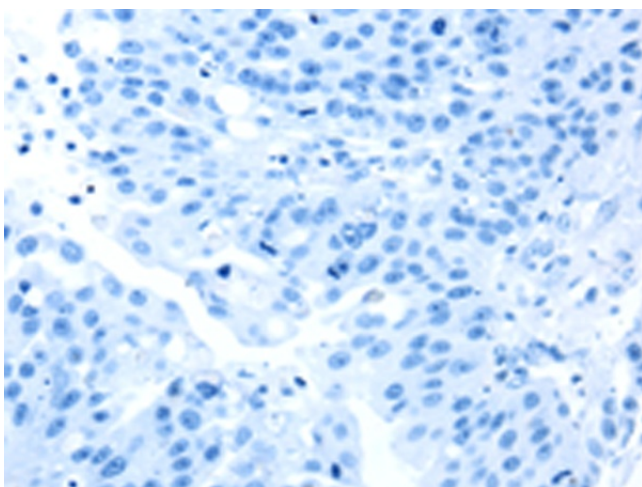
Immunohistochemistry of paraffin-embedded Human liver cancer tissue using TA323148 (IGFBP4 Antibody) at dilution 1/35 (Original magnification: ×200)



Immunohistochemistry of paraffin-embedded Human liver cancer tissue using TA323148 (IGFBP4 Antibody) at dilution 1/35, treated with fusion protein. (Original magnification: ×200)



Immunohistochemistry of paraffin-embedded Human breast cancer tissue using TA323148 (IGFBP4 Antibody) at dilution 1/35 (Original magnification: ×200)



Immunohistochemistry of paraffin-embedded Human breast cancer tissue using TA323148 (IGFBP4 Antibody) at dilution 1/35, treated with fusion protein. (Original magnification: ×200)