

## Product datasheet for **TA323146S**

### ABCA2 Rabbit Polyclonal Antibody

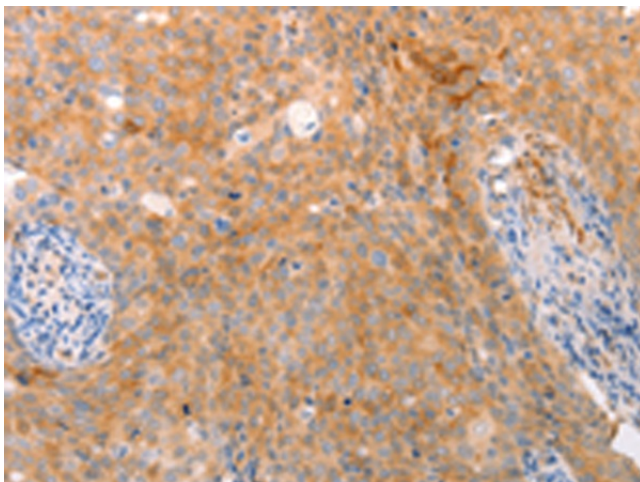
#### Product data:

Product Type:	Primary Antibodies
Applications:	IHC
Recommended Dilution:	IHC: 25-100 Positive control: Human cervical cancer Predicted cell location: Cytoplasm
Reactivity:	Human, Mouse, Rat
Host:	Rabbit
Isotype:	IgG
Clonality:	Polyclonal
Immunogen:	Synthetic peptide corresponding to a region derived from 113-127 amino acids of human ATP-binding cassette, sub-family A (ABC1), member 2
Formulation:	PBS pH7.3, 0.05% NaN <sub>3</sub> , 50% glycerol
Purification:	Antigen affinity purification
Conjugation:	Unconjugated
Storage:	Store at -20°C as received.
Stability:	Stable for 12 months from date of receipt.
Gene Name:	ATP binding cassette subfamily A member 2
Database Link:	<a href="#">NP_001597</a> <a href="#">Entrez Gene 11305 Mouse</a> <a href="#">Entrez Gene 79248 Rat</a> <a href="#">Entrez Gene 20 Human</a> <a href="#">Q9BZC7</a>
Background:	The membrane-associated protein encoded by this gene is a member of the superfamily of ATP-binding cassette (ABC) transporters. ABC proteins transport various molecules across extra- and intracellular membranes. ABC genes are divided into seven distinct subfamilies (ABC1; MDR/TAP; MRP; ALD; OABP; GCN20; White). This protein is a member of the ABC1 subfamily. Members of the ABC1 subfamily comprise the only major ABC subfamily found exclusively in multicellular eukaryotes. This protein is highly expressed in brain tissue and may play a role in macrophage lipid metabolism and neural development. Two transcript variants encoding different isoforms have been found for this gene.

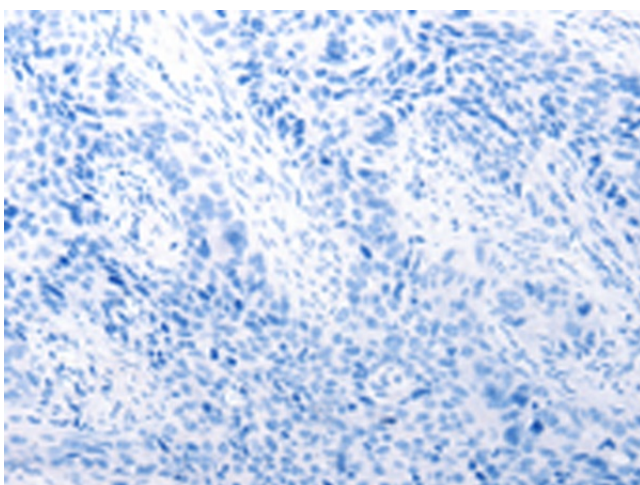


[View online »](#)

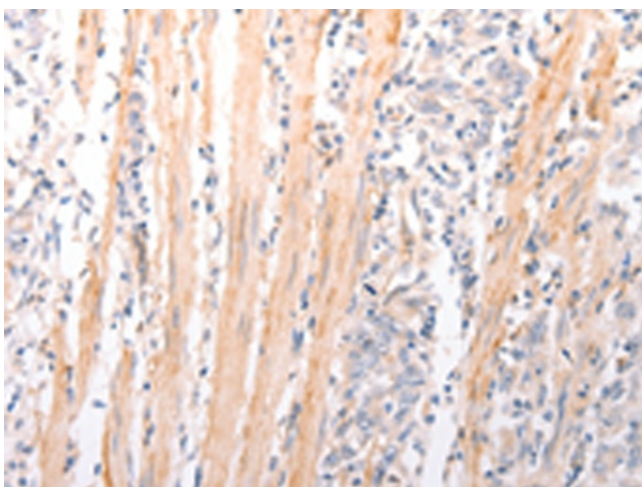
Synonyms: ABC2  
Protein Families: Druggable Genome, Transmembrane  
Protein Pathways: ABC transporters, Lysosome

**Product images:**

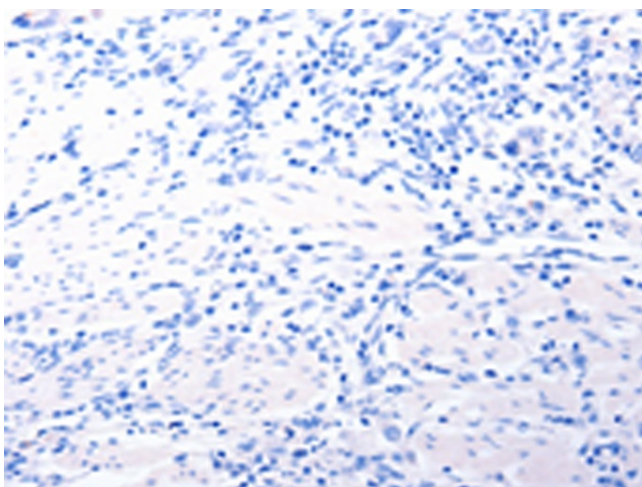
Immunohistochemistry of paraffin-embedded Human cervical cancer tissue using [TA323146] (ABCA2 Antibody) at dilution 1/25 (Original magnification: x200)



Immunohistochemistry of paraffin-embedded Human cervical cancer tissue using [TA323146] (ABCA2 Antibody) at dilution 1/25, treated with synthetic peptide. (Original magnification: x200)



Immunohistochemistry of paraffin-embedded Human gastric cancer tissue using [TA323146] (ABCA2 Antibody) at dilution 1/25 (Original magnification:  $\times 200$ )



Immunohistochemistry of paraffin-embedded Human gastric cancer tissue using [TA323146] (ABCA2 Antibody) at dilution 1/25, treated with synthetic peptide. (Original magnification:  $\times 200$ )