

## Product datasheet for **TA323138**

### AKT2 Rabbit Polyclonal Antibody

#### Product data:

|                       |  |
|-----------------------|--|
| Product Type:         | Primary Antibodies   |
| Applications:         | IHC  |
| Recommended Dilution: | IHC: 50-200<br>Positive control: Human brain<br>Predicted cell location: Cytoplasm   |
| Reactivity:           | Human, Mouse, Rat  |
| Host:                 | Rabbit   |
| Isotype:              | IgG  |
| Clonality:            | Polyclonal   |
| Immunogen:            | Synthetic peptide corresponding to a region derived from 455-469 amino acids of human v-akt murine thymoma viral oncogene homolog 2  |
| Formulation:          | PBS pH7.3, 0.05% NaN <sub>3</sub> , 50% glycerol   |
| Concentration:        | lot specific   |
| Purification:         | Antigen affinity purification  |
| Conjugation:          | Unconjugated   |
| Storage:              | Store at -20°C as received.  |
| Stability:            | Stable for 12 months from date of receipt.   |
| Gene Name:            | AKT serine/threonine kinase 2  |
| Database Link:        | <a href="#">NP_001617</a><br><a href="#">Entrez Gene 11652 MouseEntrez Gene 25233 RatEntrez Gene 208 Human P31751</a>  |
| Background:           | This gene is a putative oncogene encoding a protein belonging to a subfamily of serine/threonine kinases containing SH2-like (Src homology 2-like) domains. The gene was shown to be amplified and overexpressed in 2 of 8 ovarian carcinoma cell lines and 2 of 15 primary ovarian tumors. Overexpression contributes to the malignant phenotype of a subset of human ductal pancreatic cancers. The encoded protein is a general protein kinase capable of phosphorylating several known proteins. |
| Synonyms:             | HIHGHH; PKBB; PKBBETA; PRKBB; RAC-BETA   |

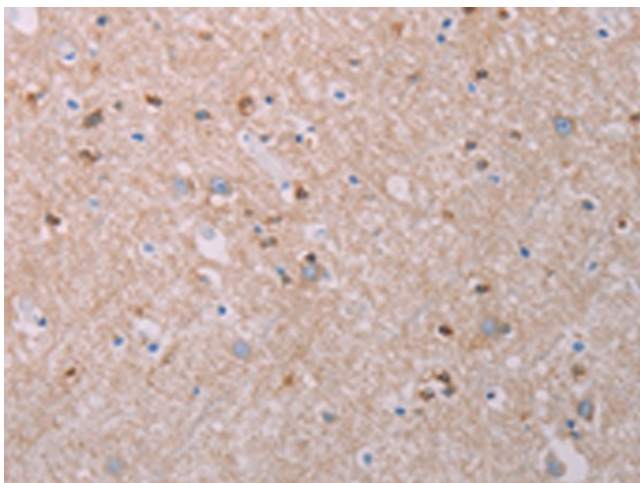


[View online »](#)

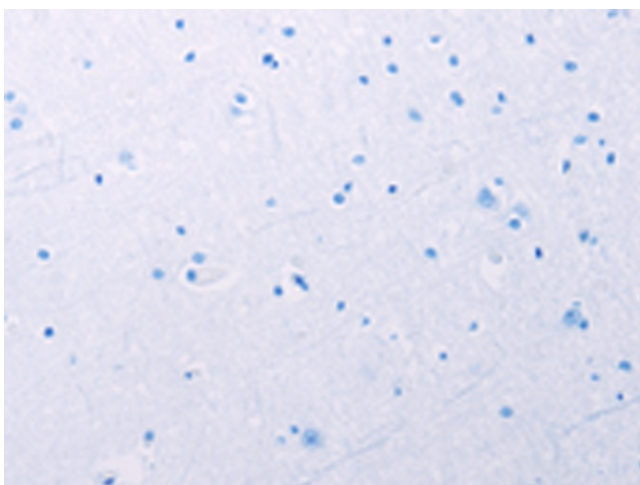
**Protein Families:** Druggable Genome, ES Cell Differentiation/IPS, Protein Kinase

**Protein Pathways:** Acute myeloid leukemia, Adipocytokine signaling pathway, Apoptosis, B cell receptor signaling pathway, Chemokine signaling pathway, Chronic myeloid leukemia, Colorectal cancer, Endometrial cancer, ErbB signaling pathway, Fc epsilon RI signaling pathway, Fc gamma R-mediated phagocytosis, Focal adhesion, Glioma, Insulin signaling pathway, Jak-STAT signaling pathway, MAPK signaling pathway, Melanoma, mTOR signaling pathway, Neurotrophin signaling pathway, Non-small cell lung cancer, Pancreatic cancer, Pathways in cancer, Progesterone-mediated oocyte maturation, Prostate cancer, Renal cell carcinoma, Small cell lung cancer, T cell receptor signaling pathway, Tight junction, Toll-like receptor signaling pathway, VEGF signaling pathway

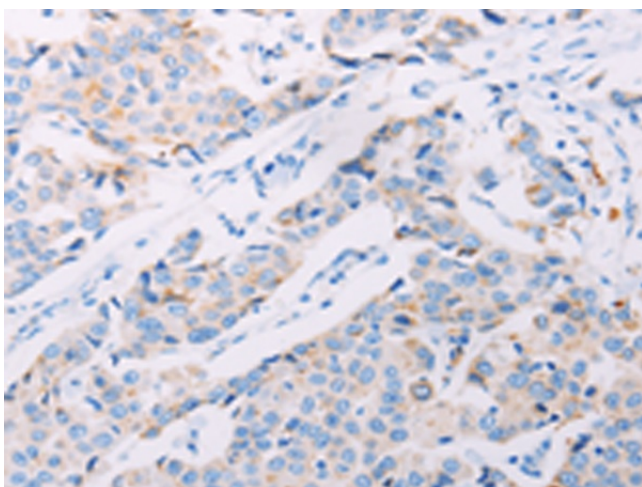
**Product images:**



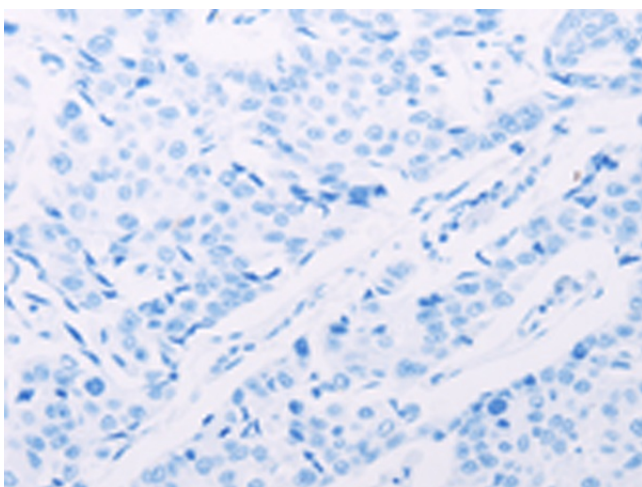
Immunohistochemistry of paraffin-embedded Human brain tissue using TA323138 (AKT2 Antibody) at dilution 1/70 (Original magnification: ×200)



Immunohistochemistry of paraffin-embedded Human brain tissue using TA323138 (AKT2 Antibody) at dilution 1/70, treated with synthetic peptide. (Original magnification: ×200)



Immunohistochemistry of paraffin-embedded Human breast cancer tissue using TA323138 (AKT2 Antibody) at dilution 1/70 (Original magnification:  $\times 200$ )



Immunohistochemistry of paraffin-embedded Human breast cancer tissue using TA323138 (AKT2 Antibody) at dilution 1/70, treated with synthetic peptide. (Original magnification:  $\times 200$ )