

## Product datasheet for **TA323136S**

### Iba1 (AIF1) Rabbit Polyclonal Antibody

#### Product data:

Product Type:	Primary Antibodies
Applications:	IHC, WB
Recommended Dilution:	WB: 200-1000 WB positive control: Mouse kidney tissue IHC: 50-200 Positive control: Human breast cancer Predicted cell location: Cytoplasm
Reactivity:	Human, Mouse, Rat
Host:	Rabbit
Isotype:	IgG
Clonality:	Polyclonal
Immunogen:	Full length fusion protein
Formulation:	PBS pH7.3, 0.05% NaN <sub>3</sub> , 50% glycerol
Purification:	Antigen affinity purification
Conjugation:	Unconjugated
Storage:	Store at -20°C as received.
Stability:	Stable for 12 months from date of receipt.
Predicted Protein Size:	17 kDa
Gene Name:	allograft inflammatory factor 1
Database Link:	<a href="#">NP_001614</a> <a href="#">Entrez Gene 11629 MouseEntrez Gene 29427 RatEntrez Gene 199 Human P55008</a>



[View online »](#)

**Background:**

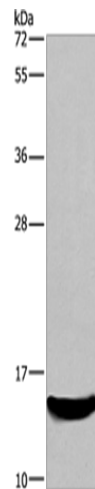
This gene is induced by cytokines and interferon. Its protein product is thought to be involved in negative regulation of growth of vascular smooth muscle cells; which contributes to the anti-inflammatory response to vessel wall trauma. Three transcript variants encoding different isoforms have been found for this gene. Actin-binding protein that enhances membrane ruffling and RAC activation. Enhances the actin-bundling activity of LCP1. Binds calcium. Plays a role in RAC signaling and in phagocytosis. May play a role in macrophage activation and function. Promotes the proliferation of vascular smooth muscle cells and of T-lymphocytes. Enhances lymphocyte migration. Plays a role in vascular inflammation.

**Synonyms:**

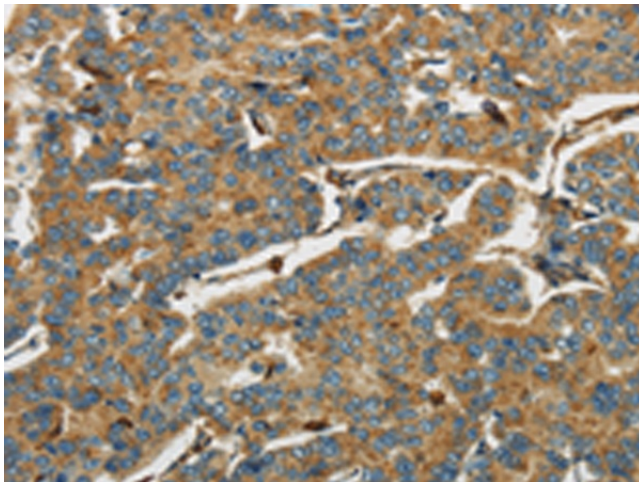
AIF-1; IBA1; IRT-1; IRT1

**Protein Families:**

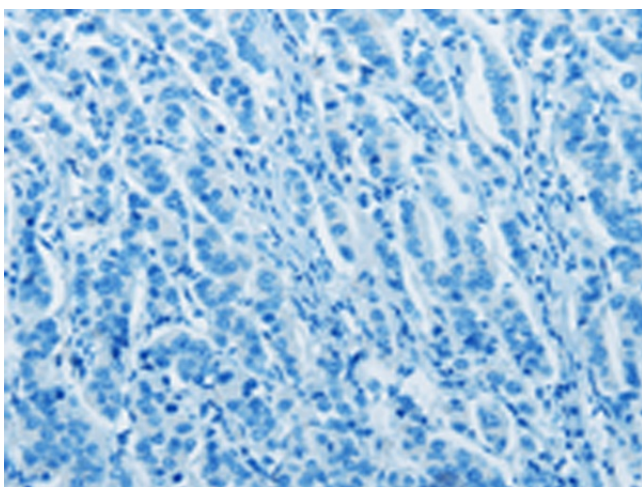
Druggable Genome

**Product images:**


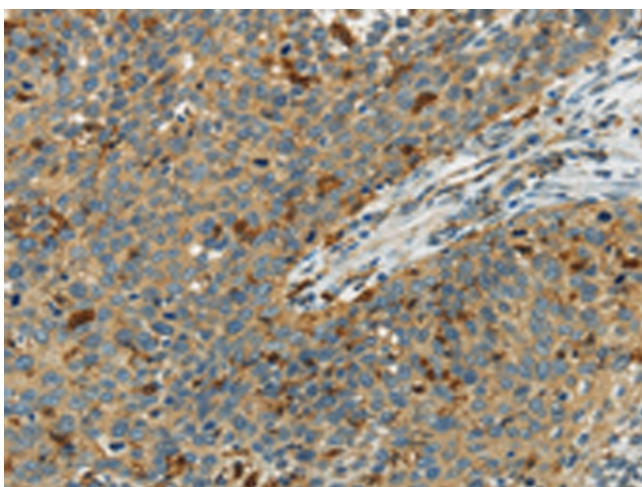
Gel: 10%SDS-PAGE  
 Lysate: 40 µg  
 Lane: Mouse kidney tissue  
 Primary antibody: [TA323136] (AIF1 Antibody) at dilution 1/500  
 Secondary antibody: Goat anti rabbit IgG at 1/8000 dilution  
 Exposure time: 4 minutes



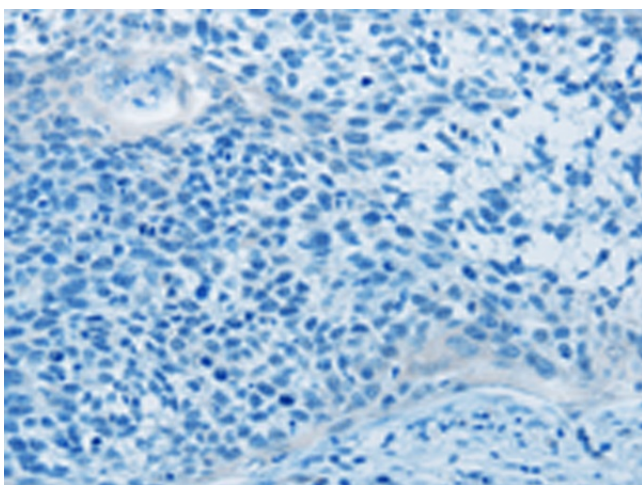
Immunohistochemistry of paraffin-embedded Human breast cancer tissue using [TA323136] (AIF1 Antibody) at dilution 1/40 (Original magnification: ×200)



Immunohistochemistry of paraffin-embedded Human breast cancer tissue using [TA323136] (AIF1 Antibody) at dilution 1/40, treated with fusion protein. (Original magnification:  $\times 200$ )



Immunohistochemistry of paraffin-embedded Human cervical cancer tissue using [TA323136] (AIF1 Antibody) at dilution 1/40 (Original magnification:  $\times 200$ )



Immunohistochemistry of paraffin-embedded Human cervical cancer tissue using [TA323136] (AIF1 Antibody) at dilution 1/40, treated with fusion protein. (Original magnification:  $\times 200$ )