

## Product datasheet for **TA323134S**

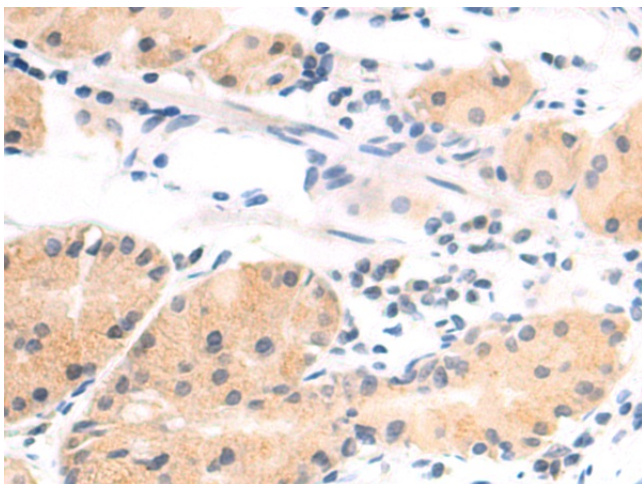
### AMD1 Rabbit Polyclonal Antibody

#### Product data:

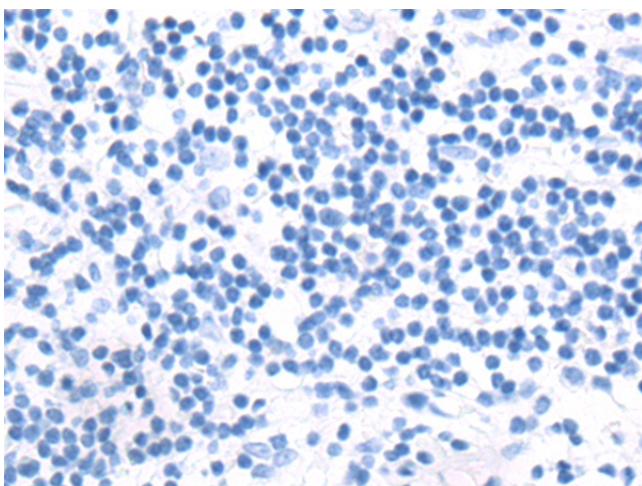
Product Type:	Primary Antibodies
Applications:	IHC
Recommended Dilution:	IHC: 50-200 Positive control: Human gastric cancer Predicted cell location: Cytoplasm
Reactivity:	Human, Mouse, Rat
Host:	Rabbit
Isotype:	IgG
Clonality:	Polyclonal
Immunogen:	Synthetic peptide corresponding to a region derived from 20-33 amino acids of human adenosylmethionine decarboxylase 1
Formulation:	PBS pH7.3, 0.05% NaN <sub>3</sub> , 50% glycerol
Purification:	Antigen affinity purification
Conjugation:	Unconjugated
Storage:	Store at -20°C as received.
Stability:	Stable for 12 months from date of receipt.
Gene Name:	adenosylmethionine decarboxylase 1
Database Link:	<a href="#">NP_001625</a> <a href="#">Entrez Gene 11702 Mouse</a> <a href="#">Entrez Gene 81640 Rat</a> <a href="#">Entrez Gene 262 Human</a> <a href="#">P17707</a>
Background:	This gene encodes an important intermediate enzyme in polyamine biosynthesis. The polyamines spermine; spermidine; and putrescine are low-molecular-weight aliphatic amines essential for cellular proliferation and tumor promotion. Two alternatively spliced transcript variants that encode different proteins have been identified. Pseudogenes of this gene are found on chromosomes 5; 6; 10; X and Y.
Synonyms:	ADOMETDC; AMD; SAMDC
Protein Families:	Druggable Genome
Protein Pathways:	Arginine and proline metabolism, Cysteine and methionine metabolism, Metabolic pathways



[View online »](#)

**Product images:**

Immunohistochemistry of paraffin-embedded Human gastric cancer tissue using [TA323134] (AMD1 Antibody) at dilution 1/50 (Original magnification:  $\times 200$ )



Immunohistochemistry of paraffin-embedded Human gastric cancer tissue using [TA323134] (AMD1 Antibody) at dilution 1/50, treated with synthetic peptide. (Original magnification:  $\times 200$ )