

Product datasheet for **TA323132**

ARF1 Rabbit Polyclonal Antibody

Product data:

Product Type:	Primary Antibodies
Applications:	IHC, WB
Recommended Dilution:	WB: 500-2000 WB positive control: Human fetal brain and kidney tissue IHC: 25-100 Positive control: Human thyroid cancer Predicted cell location: Cytoplasm
Reactivity:	Human, Mouse, Rat
Host:	Rabbit
Isotype:	IgG
Clonality:	Polyclonal
Immunogen:	Synthetic peptide corresponding to a region derived from 100-115 amino acids of Human ADP-ribosylation factor 1
Formulation:	PBS pH7.3, 0.05% NaN ₃ , 50% glycerol
Concentration:	lot specific
Purification:	Antigen affinity purification
Conjugation:	Unconjugated
Storage:	Store at -20°C as received.
Stability:	Stable for 12 months from date of receipt.
Predicted Protein Size:	21 kDa
Gene Name:	ADP ribosylation factor 1
Database Link:	NP_001649 Entrez Gene 11840 Mouse Entrez Gene 64310 Rat Entrez Gene 375 Human P84077



[View online »](#)

Background:

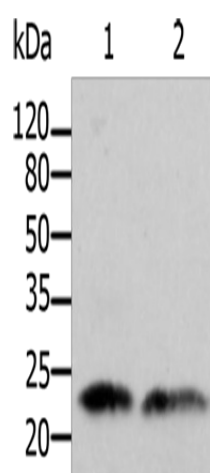
ADP-ribosylation factor 1 (ARF1) is a member of the human ARF gene family. The family members encode small guanine nucleotide-binding proteins that stimulate the ADP-ribosyltransferase activity of cholera toxin and play a role in vesicular trafficking as activators of phospholipase D. The gene products; including 6 ARF proteins and 11 ARF-like proteins; constitute a family of the RAS superfamily. The ARF proteins are categorized as class I (ARF1; ARF2 and ARF3); class II (ARF4 and ARF5) and class III (ARF6); and members of each class share a common gene organization. The ARF1 protein is localized to the Golgi apparatus and has a central role in intra-Golgi transport. Multiple alternatively spliced transcript variants encoding the same protein have been found for this gene.

Synonyms:

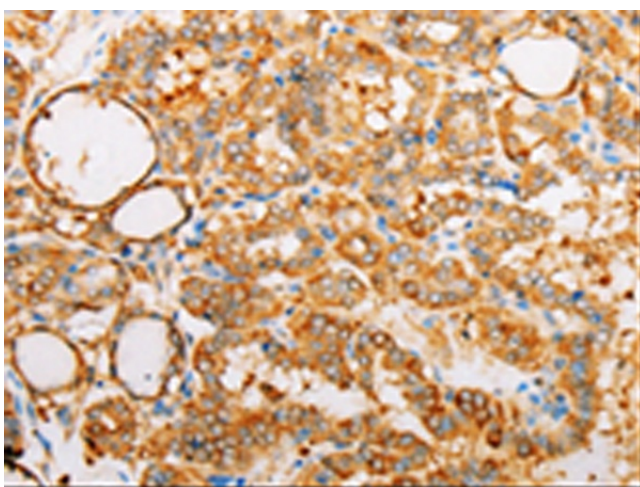
ADP-ribosylation factor 1; OTTHUMP00000035715

Protein Pathways:

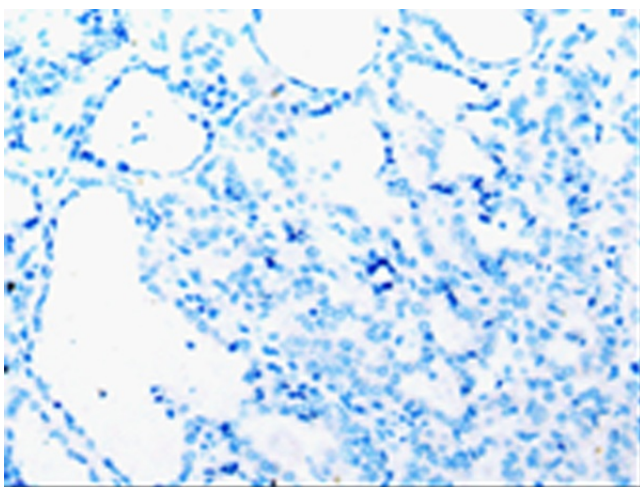
Vibrio cholerae infection

Product images:

Gel: 12%SDS-PAGE
Lysate: 40 µg
Lane 1-2: Human fetal brain tissue
Human kidney tissue
Primary antibody: TA323132 (ARF1 Antibody) at dilution 1/500
Secondary antibody: Goat anti rabbit IgG at 1/8000 dilution
Exposure time: 1 minute



Immunohistochemistry of paraffin-embedded Human thyroid cancer tissue using TA323132 (ARF1 Antibody) at dilution 1/25 (Original magnification: ×200)



Immunohistochemistry of paraffin-embedded Human thyroid cancer tissue using TA323132 (ARF1 Antibody) at dilution 1/25, treated with synthetic peptide. (Original magnification: ×200)