

## Product datasheet for **TA323131S**

### ARL2 Rabbit Polyclonal Antibody

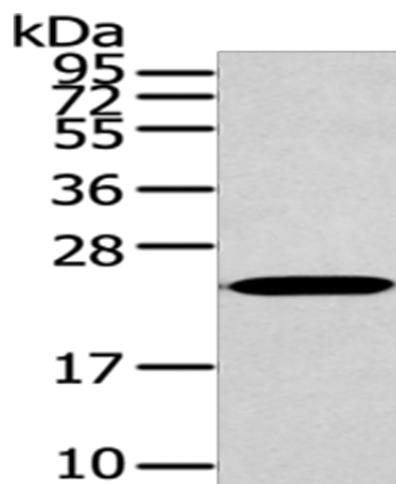
#### Product data:

Product Type:	Primary Antibodies
Applications:	WB
Recommended Dilution:	WB: 500-2000 WB positive control: 293T cells
Reactivity:	Human, Mouse, Rat
Host:	Rabbit
Isotype:	IgG
Clonality:	Polyclonal
Immunogen:	Synthetic peptide corresponding to a region derived from 8-19 amino acids of Human ADP-ribosylation factor-like protein 2
Formulation:	PBS pH7.3, 0.05% NaN <sub>3</sub> , 50% glycerol
Purification:	Antigen affinity purification
Conjugation:	Unconjugated
Storage:	Store at -20°C as received.
Stability:	Stable for 12 months from date of receipt.
Predicted Protein Size:	21 kDa
Gene Name:	ADP ribosylation factor like GTPase 2
Database Link:	<a href="#">NP_001658</a> <a href="#">Entrez Gene 56327 Mouse</a> <a href="#">Entrez Gene 65142 Rat</a> <a href="#">Entrez Gene 402 Human</a> <a href="#">P36404</a>
Background:	ADP-ribosylation factor-like protein 2 is a protein that in humans is encoded by the ARL2 gene. The ADP-ribosylation factor (ARF) genes are small GTP-binding proteins of the RAS superfamily. ARL2 is a member of a functionally distinct group of ARF-like genes. Together with ARL2; plays a role in the nuclear translocation; retention and transcriptional activity of STAT3. Component of a regulated secretory pathway involved in Ca <sup>2+</sup> -dependent release of acetylcholine. Required for normal progress through the cell cycle.
Synonyms:	ARFL2



[View online »](#)

## Product images:



Gel: 12%SDS-PAGE

Lysate: 40  $\mu$ g

Lane: 293T cells

Primary antibody: [TA323131] (ARL2 Antibody) at dilution 1/200

Secondary antibody: Goat anti rabbit IgG at 1/8000 dilution

Exposure time: 10 seconds