

Product datasheet for **TA323130**

ARL2 Rabbit Polyclonal Antibody

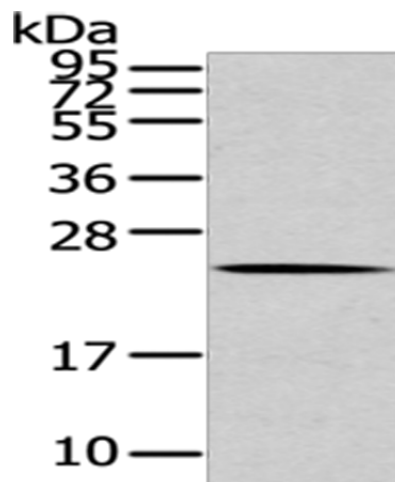
Product data:

Product Type:	Primary Antibodies
Applications:	WB
Recommended Dilution:	WB: 200-1000 WB positive control: 293T cells
Reactivity:	Human, Mouse, Rat
Host:	Rabbit
Isotype:	IgG
Clonality:	Polyclonal
Immunogen:	Synthetic peptide corresponding to a region derived from 8-19 amino acids of Human ADP-ribosylation factor-like protein 2
Formulation:	PBS pH7.3, 0.05% NaN ₃ , 50% glycerol
Concentration:	lot specific
Purification:	Antigen affinity purification
Conjugation:	Unconjugated
Storage:	Store at -20°C as received.
Stability:	Stable for 12 months from date of receipt.
Predicted Protein Size:	21 kDa
Gene Name:	ADP ribosylation factor like GTPase 2
Database Link:	NP_001658 Entrez Gene 56327 Mouse Entrez Gene 65142 Rat Entrez Gene 402 Human P36404
Background:	ADP-ribosylation factor-like protein 2 is a protein that in humans is encoded by the ARL2 gene. The ADP-ribosylation factor (ARF) genes are small GTP-binding proteins of the RAS superfamily. ARL2 is a member of a functionally distinct group of ARF-like genes. Together with ARL2; plays a role in the nuclear translocation; retention and transcriptional activity of STAT3. Component of a regulated secretory pathway involved in Ca ²⁺ -dependent release of acetylcholine. Required for normal progress through the cell cycle.
Synonyms:	ARFL2



[View online »](#)

Product images:



Gel: 12%SDS-PAGE
Lysate: 40 μ g
Lane: 293T cells
Primary antibody: TA323130 (ARL2 Antibody) at dilution 1/200
Secondary antibody: Goat anti rabbit IgG at 1/8000 dilution
Exposure time: 10 seconds