

## Product datasheet for **TA323129**

### **SERCA2 (ATP2A2) Rabbit Polyclonal Antibody**

#### **Product data:**

Product Type:	Primary Antibodies
Applications:	WB
Recommended Dilution:	WB: 1:500-2000
Reactivity:	Human, Mouse, Rat
Host:	Rabbit
Isotype:	IgG
Clonality:	Polyclonal
Immunogen:	Fusion protein corresponding to a region derived from 111-253 amino acids of human ATPase, Ca <sup>++</sup> transporting, cardiac muscle, slow twitch 2
Formulation:	PBS pH7.3, 0.05% NaN <sub>3</sub> , 50% glycerol
Concentration:	lot specific
Purification:	Antigen affinity purification
Conjugation:	Unconjugated
Storage:	Store at -20°C as received.
Stability:	Stable for 12 months from date of receipt.
Predicted Protein Size:	115 kDa
Gene Name:	ATPase sarcoplasmic/endoplasmic reticulum Ca <sup>2+</sup> transporting 2
Database Link:	<a href="#">NP_001672</a> <a href="#">Entrez Gene 11938 Mouse</a> <a href="#">Entrez Gene 29693 Rat</a> <a href="#">Entrez Gene 488 Human</a> <a href="#">P16615</a>



[View online »](#)

**Background:**

The ATP2A2 (SERCA2) calcium pump is one of several sarcoplasmic and endoplasmic reticulum Ca<sup>2+</sup>-ATPases responsible for regulating calcium transport across intracellular membranes. Multiple isoforms have been isolated, with ATP2A2a (SERCA2a) found predominantly in the sarcoplasmic reticulum of muscle cells and ATP2A2b (SERCA2b) more ubiquitously expressed in the endoplasmic reticulum of most cell types. An isoform containing a truncated carboxy region (ATP2A2c) is expressed in epithelial and hematopoietic cell lines and may be involved in monocyte differentiation). Post-translational modification of ATP2A2 (SERCA2), including phosphorylation and tyrosine nitration, modify Ca<sup>2+</sup> -ATPase activity and calcium transport). Mutation in the corresponding ATP2A2 (SERCA2) gene results in Darier disease, a skin disorder characterized by the presence of dark, keratotic papules or rash found on the head and torso.

**Synonyms:**

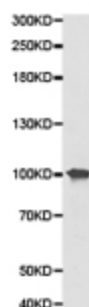
ATP2B; DAR; DD; SERCA2

**Protein Families:**

Druggable Genome, Transmembrane

**Protein Pathways:**

Alzheimer's disease, Arrhythmogenic right ventricular cardiomyopathy (ARVC), Calcium signaling pathway, Cardiac muscle contraction, Dilated cardiomyopathy, Hypertrophic cardiomyopathy (HCM)

**Product images:**

Predicted band size: 115 kDa. Positive control: Heart tissue lysate. Recommended dilution: 1/500-2000. (Gel: 8%SDS-PAGE Lysate: 40 ug Primary antibody: 1/500 dilution Secondary antibody: Goat anti Rabbit IgG - H&L (HRP) at 1/10000 dilution Exposure time: 1 minute)