

Product datasheet for **TA323127S**

KLF5 Rabbit Polyclonal Antibody

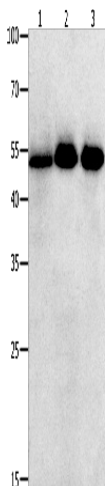
Product data:

Product Type:	Primary Antibodies
Applications:	WB
Recommended Dilution:	WB: 500-2000 WB positive control: Human lymphoma , ovarian and colon cancer tissue
Reactivity:	Human, Mouse
Host:	Rabbit
Isotype:	IgG
Clonality:	Polyclonal
Immunogen:	Synthetic peptide corresponding to a region derived from 107-120 amino acids of Human Kruppel-like factor 6 (intestinal)
Formulation:	PBS pH7.3, 0.05% NaN ₃ , 50% glycerol
Purification:	Antigen affinity purification
Conjugation:	Unconjugated
Storage:	Store at -20°C as received.
Stability:	Stable for 12 months from date of receipt.
Predicted Protein Size:	51 kDa
Gene Name:	Kruppel-like factor 5 (intestinal)
Database Link:	NP_001721 Entrez Gene 12224 Mouse Entrez Gene 688 Human Q13887
Background:	This gene encodes a member of the Kruppel-like factor subfamily of zinc finger proteins. Since the protein localizes to the nucleus and binds the epidermal growth factor response element; it is thought to be a transcription factor.
Synonyms:	BTEB2; CKLF; IKLF
Protein Families:	Embryonic stem cells, ES Cell Differentiation/IPS, Induced pluripotent stem cells, Transcription Factors



[View online »](#)

Product images:



Gel: 10+12+15%SDS-PAGE

Lysate: 40 μ g

Lane 1-3: Human lymphoma tissue

Human ovarian tissue

Human colon cancer tissue

Primary antibody: [TA323127] (KLF5 Antibody) at dilution 1/350

Secondary antibody: Goat anti rabbit IgG at 1/8000 dilution

Exposure time: 20 seconds