

## Product datasheet for **TA323127**

### **KLF5 Rabbit Polyclonal Antibody**

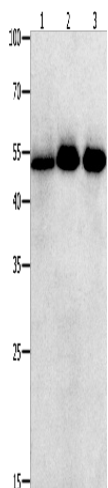
#### **Product data:**

<b>Product Type:</b>	Primary Antibodies
<b>Applications:</b>	WB
<b>Recommended Dilution:</b>	WB: 500-2000 WB positive control: Human lymphoma , ovarian and colon cancer tissue
<b>Reactivity:</b>	Human, Mouse
<b>Host:</b>	Rabbit
<b>Isotype:</b>	IgG
<b>Clonality:</b>	Polyclonal
<b>Immunogen:</b>	Synthetic peptide corresponding to a region derived from 107-120 amino acids of Human Kruppel-like factor 6 (intestinal)
<b>Formulation:</b>	PBS pH7.3, 0.05% NaN <sub>3</sub> , 50% glycerol
<b>Concentration:</b>	lot specific
<b>Purification:</b>	Antigen affinity purification
<b>Conjugation:</b>	Unconjugated
<b>Storage:</b>	Store at -20°C as received.
<b>Stability:</b>	Stable for 12 months from date of receipt.
<b>Predicted Protein Size:</b>	51 kDa
<b>Gene Name:</b>	Kruppel-like factor 5 (intestinal)
<b>Database Link:</b>	<a href="#">NP_001721</a> <a href="#">Entrez Gene 12224 Mouse</a> <a href="#">Entrez Gene 688 Human</a> <a href="#">Q13887</a>
<b>Background:</b>	This gene encodes a member of the Kruppel-like factor subfamily of zinc finger proteins. Since the protein localizes to the nucleus and binds the epidermal growth factor response element; it is thought to be a transcription factor.
<b>Synonyms:</b>	BTEB2; CKLF; IKLF
<b>Protein Families:</b>	Embryonic stem cells, ES Cell Differentiation/IPS, Induced pluripotent stem cells, Transcription Factors



[View online »](#)

## Product images:



Gel: 10+12+15%SDS-PAGE

Lysate: 40 µg

Lane 1-3: Human lymphoma tissue

Human ovarian tissue

Human colon cancer tissue

Primary antibody: TA323127 (KLF5 Antibody) at  
dilution 1/350

Secondary antibody: Goat anti rabbit IgG at  
1/8000 dilution

Exposure time: 20 seconds