

Product datasheet for **TA323126**

KLF5 Rabbit Polyclonal Antibody

Product data:

Product Type:	Primary Antibodies
Applications:	IHC, WB
Recommended Dilution:	WB: 500-2000 WB positive control: Jurkat cells and human ovarian cancer tissue IHC: 100-300 Positive control: Human ovarian cancer Predicted cell location: Cytoplasm, Nucleus
Reactivity:	Human, Mouse
Host:	Rabbit
Isotype:	IgG
Clonality:	Polyclonal
Immunogen:	Synthetic peptide corresponding to a region derived from 107-119 amino acids of Human Kruppel-like factor 5 (intestinal)
Formulation:	PBS pH7.3, 0.05% NaN ₃ , 50% glycerol
Concentration:	lot specific
Purification:	Antigen affinity purification
Conjugation:	Unconjugated
Storage:	Store at -20°C as received.
Stability:	Stable for 12 months from date of receipt.
Predicted Protein Size:	51 kDa
Gene Name:	Kruppel-like factor 5 (intestinal)
Database Link:	NP_001721 Entrez Gene 12224 Mouse Entrez Gene 688 Human Q13887
Background:	This gene encodes a member of the Kruppel-like factor subfamily of zinc finger proteins. Since the protein localizes to the nucleus and binds the epidermal growth factor response element; it is thought to be a transcription factor.
Synonyms:	BTEB2; CKLF; IKLF



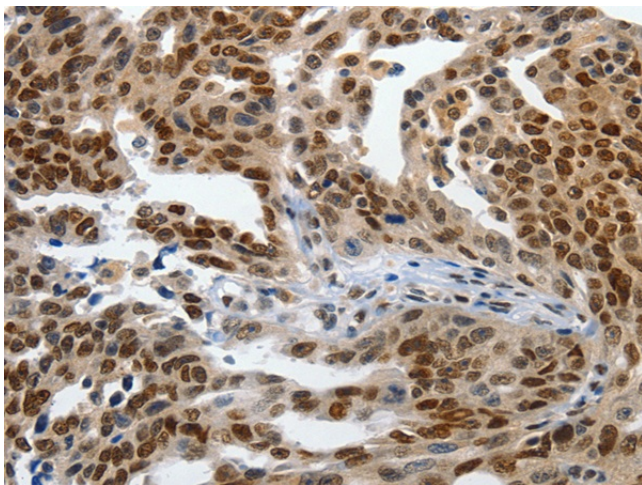
[View online »](#)

Protein Families: Embryonic stem cells, ES Cell Differentiation/IPS, Induced pluripotent stem cells, Transcription Factors

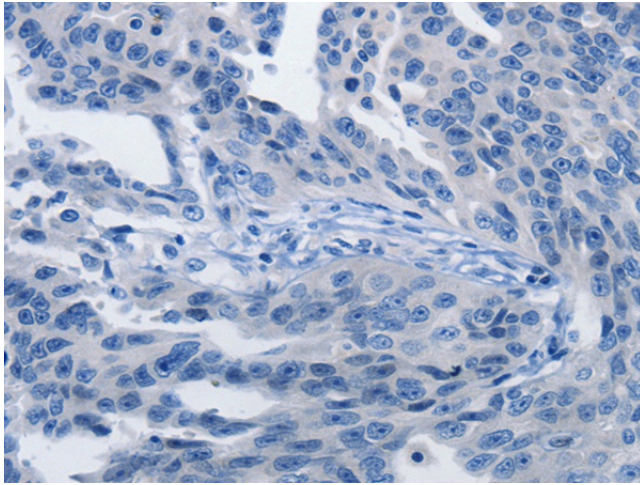
Product images:



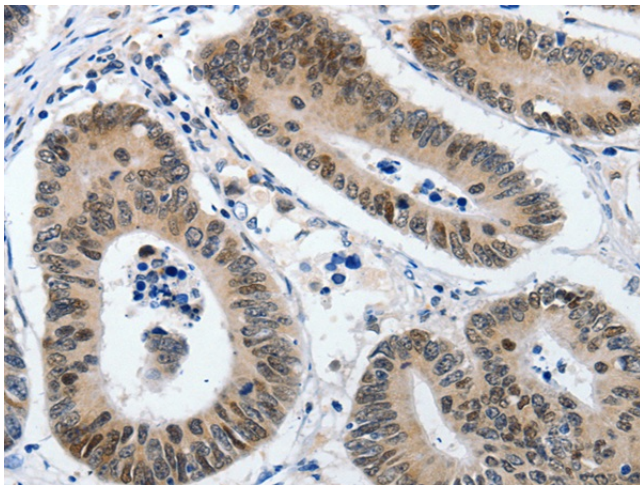
Gel: 10+12+15%SDS-PAGE
Lysate: 40 µg
Lane 1-2: Jurkat cells
human ovarian cancer tissue
Primary antibody: TA323126 (KLF5 Antibody) at dilution 1/1700
Secondary antibody: Goat anti rabbit IgG at 1/8000 dilution
Exposure time: 20 seconds



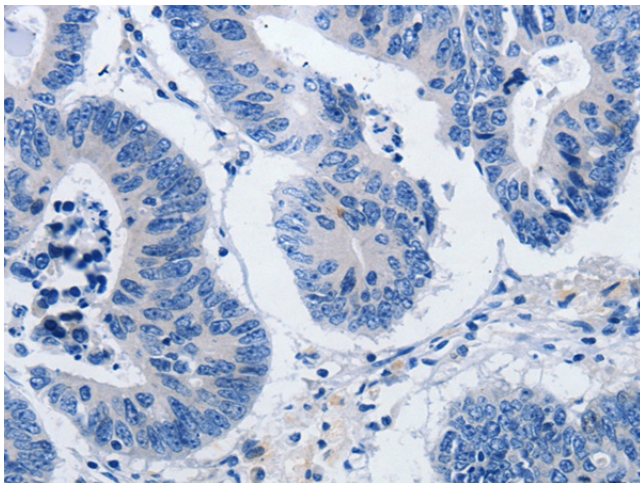
Immunohistochemistry of paraffin-embedded Human ovarian cancer tissue using TA323126 (KLF5 Antibody) at dilution 1/120 (Original magnification: ×200)



Immunohistochemistry of paraffin-embedded Human ovarian cancer tissue using TA323126 (KLF5 Antibody) at dilution 1/120, treated with synthetic peptide. (Original magnification: ×200)



Immunohistochemistry of paraffin-embedded Human colon cancer tissue using TA323126 (KLF5 Antibody) at dilution 1/120 (Original magnification: ×200)



Immunohistochemistry of paraffin-embedded Human colon cancer tissue using TA323126 (KLF5 Antibody) at dilution 1/120, treated with synthetic peptide. (Original magnification: ×200)