

Product datasheet for **TA323125**

RUNX1 Rabbit Polyclonal Antibody

Product data:

Product Type:	Primary Antibodies
Applications:	WB
Recommended Dilution:	ELISA: 1:500-5000, WB: 1:500-2000
Reactivity:	Human, Mouse, Rat
Host:	Rabbit
Isotype:	IgG
Clonality:	Polyclonal
Immunogen:	Synthetic peptide corresponding to a region derived from 201-215 amino acids of Human Core-binding factor subunit alpha-2
Formulation:	PBS pH7.3, 0.05% NaN ₃ , 50% glycerol
Concentration:	lot specific
Purification:	Antigen affinity purification
Conjugation:	Unconjugated
Storage:	Store at -20°C as received.
Stability:	Stable for 12 months from date of receipt.
Predicted Protein Size:	26 kDa
Gene Name:	runt related transcription factor 1
Database Link:	NP_001745 Entrez Gene 12394 MouseEntrez Gene 50662 RatEntrez Gene 861 Human Q01196
Background:	Core binding factor (CBF) is a heterodimeric transcription factor that binds to the core element of many enhancers and promoters. The protein encoded by this gene represents the alpha subunit of CBF and is thought to be involved in the development of normal hematopoiesis. Chromosomal translocations involving this gene are well-documented and have been associated with several types of leukemia. Three transcript variants encoding different isoforms have been found for this gene
Synonyms:	AML1; AML1-EVI-1; AMLCR1; CBFA2; EVI-1; PEBP2aB

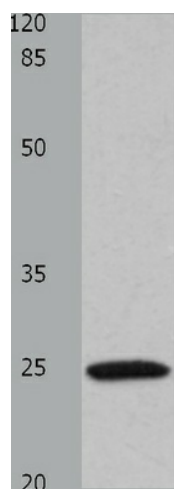


[View online »](#)

Protein Families: Druggable Genome, ES Cell Differentiation/IPS, Transcription Factors

Protein Pathways: Acute myeloid leukemia, Chronic myeloid leukemia, Pathways in cancer

Product images:



Predicted band size: 26kDa. Positive control:
Human urinary bladder tissue lysate.
Recommended dilution: 1/500-2000