

Product datasheet for **TA323118**

CDC25A Rabbit Polyclonal Antibody

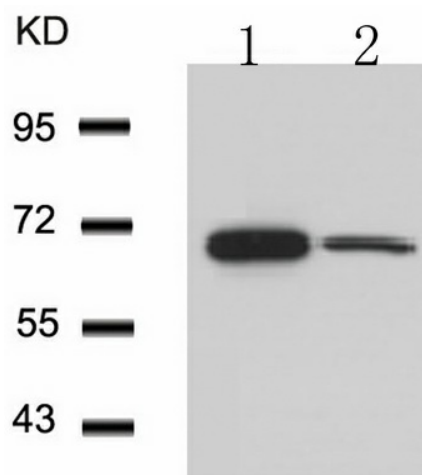
Product data:

| | |
|-------------------------|--|
| Product Type: | Primary Antibodies |
| Applications: | WB |
| Recommended Dilution: | WB: 1:500-1000 |
| Reactivity: | Human, Mouse, Rat |
| Host: | Rabbit |
| Isotype: | IgG |
| Clonality: | Polyclonal |
| Immunogen: | Peptide sequence around aa. 73~77 (M-G-S-S-E) derived from Human cdc25A. |
| Formulation: | PBS pH7.3, 0.05% NaN ₃ , 50% glycerol |
| Concentration: | lot specific |
| Purification: | Antigen affinity purification |
| Conjugation: | Unconjugated |
| Storage: | Store at -20°C as received. |
| Stability: | Stable for 12 months from date of receipt. |
| Predicted Protein Size: | 59 kDa |
| Gene Name: | cell division cycle 25A |
| Database Link: | NP_001780 Entrez Gene 12530 MouseEntrez Gene 171102 RatEntrez Gene 993 Human P30304 |
| Background: | Tyrosine protein phosphatase which functions as a dosage-dependent inducer of mitotic progression. Directly dephosphorylates CDC2 and stimulates its kinase activity. Also dephosphorylates CDK2 in complex with cyclin E, in vitro. |
| Synonyms: | CDC25A2 |
| Protein Families: | Druggable Genome, Phosphatase |
| Protein Pathways: | Cell cycle, Progesterone-mediated oocyte maturation |



[View online »](#)

Product images:



Predicted band size: 59 kDa. Positive control: HeLa and 3T6 cells lysate. Recommended dilution: 1/500-1000. (Gel: 10%SDS-PAGE Lane 1, 2: HeLa and 3T6 cells lysate Lysates: 30 ug per lane Primary antibody: 1/500 dilution Secondary antibody: Goat anti Rabbit IgG - H&L (HRP) at 1/10000 dilution Exposure time: 1 minute)