

Product datasheet for **TA323117**

CDC25A Rabbit Polyclonal Antibody

Product data:

Product Type:	Primary Antibodies
Applications:	WB
Recommended Dilution:	WB: 500-2000 WB positive control: Mouse heart tissue
Reactivity:	Human, Mouse, Rat
Host:	Rabbit
Isotype:	IgG
Clonality:	Polyclonal
Immunogen:	Fusion protein corresponding to a region derived from 376-482 amino acids of human cell division cycle 25 homolog A (<i>S. pombe</i>)
Formulation:	PBS pH7.3, 0.05% NaN ₃ , 50% glycerol
Concentration:	lot specific
Purification:	Antigen affinity purification
Conjugation:	Unconjugated
Storage:	Store at -20°C as received.
Stability:	Stable for 12 months from date of receipt.
Predicted Protein Size:	59 kDa
Gene Name:	cell division cycle 25A
Database Link:	NP_001780 Entrez Gene 12530 Mouse Entrez Gene 171102 Rat Entrez Gene 993 Human P30304
Background:	CDC25A is a member of the CDC25 family of phosphatases. CDC25A is required for progression from G1 to the S phase of the cell cycle. It activates the cyclin-dependent kinase CDC2 by removing two phosphate groups. CDC25A is specifically degraded in response to DNA damage; which prevents cells with chromosomal abnormalities from progressing through cell division. CDC25A is an oncogene; although its exact role in oncogenesis has not been demonstrated. Two transcript variants encoding different isoforms have been found for this gene.?



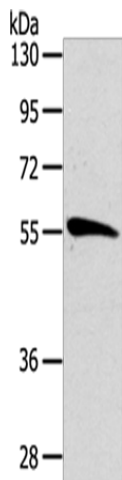
[View online »](#)

Synonyms: CDC25A2

Protein Families: Druggable Genome, Phosphatase

Protein Pathways: Cell cycle, Progesterone-mediated oocyte maturation

Product images:



Gel: 8%SDS-PAGE
Lysate: 40 μ g
Lane: Mouse heart tissue
Primary antibody: TA323117 (CDC25A Antibody)
at dilution 1/162.5
Secondary antibody: Goat anti rabbit IgG at
1/8000 dilution
Exposure time: 3 minutes