

## Product datasheet for **TA323114S**

### VE Cadherin (CDH5) Rabbit Polyclonal Antibody

#### Product data:

Product Type:	Primary Antibodies
Applications:	IHC
Recommended Dilution:	IHC: 25-100 Positive control: Human liver cancer Predicted cell location: Cytoplasm
Reactivity:	Human
Host:	Rabbit
Isotype:	IgG
Clonality:	Polyclonal
Immunogen:	Synthetic peptide corresponding to a region derived from 772-784 amino acids of Human cadherin 5, type 2 (vascular endothelium)
Formulation:	PBS pH7.3, 0.05% NaN <sub>3</sub> , 50% glycerol
Purification:	Antigen affinity purification
Conjugation:	Unconjugated
Storage:	Store at -20°C as received.
Stability:	Stable for 12 months from date of receipt.
Gene Name:	cadherin 5
Database Link:	<a href="#">NP_001786</a> <a href="#">Entrez Gene 1003 Human P33151</a>

**Background:** This gene is a classical cadherin from the cadherin superfamily and is located in a six-cadherin cluster in a region on the long arm of chromosome 16 that is involved in loss of heterozygosity events in breast and prostate cancer. The encoded protein is a calcium-dependent cell-cell adhesion glycoprotein comprised of five extracellular cadherin repeats; a transmembrane region and a highly conserved cytoplasmic tail. Functioning as a classic cadherin by imparting to cells the ability to adhere in a homophilic manner; the protein may play an important role in endothelial cell biology through control of the cohesion and organization of the intercellular junctions. An alternative splice variant has been described but its full length sequence has not been determined.

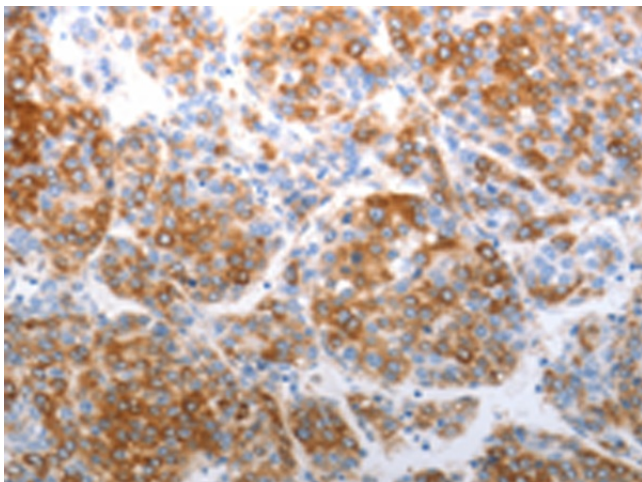


[View online »](#)

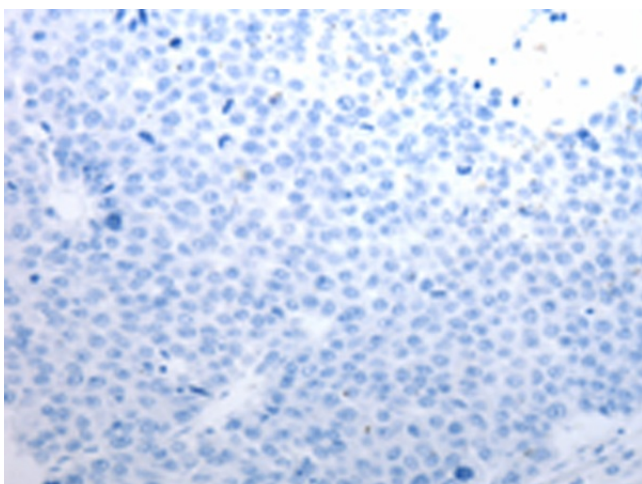
**Synonyms:** 7B4; CD144

**Protein Families:** Druggable Genome, ES Cell Differentiation/IPS, Transmembrane

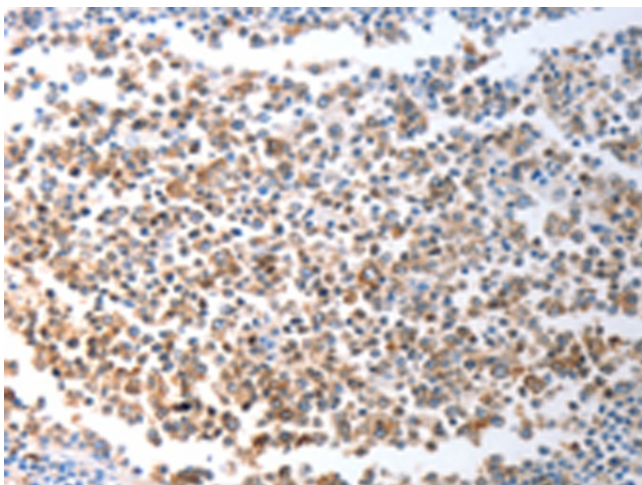
**Protein Pathways:** Cell adhesion molecules (CAMs), Leukocyte transendothelial migration

**Product images:**

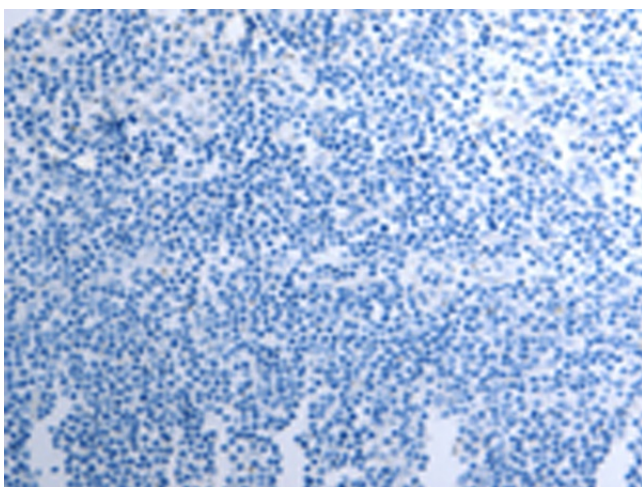
Immunohistochemistry of paraffin-embedded Human liver cancer tissue using [TA323114] (CDH5 Antibody) at dilution 1/40 (Original magnification:  $\times 200$ )



Immunohistochemistry of paraffin-embedded Human liver cancer tissue using [TA323114] (CDH5 Antibody) at dilution 1/40, treated with synthetic peptide. (Original magnification:  $\times 200$ )



Immunohistochemistry of paraffin-embedded Human tonsil tissue using [TA323114] (CDH5 Antibody) at dilution 1/40 (Original magnification: ×200)



Immunohistochemistry of paraffin-embedded Human tonsil tissue using [TA323114] (CDH5 Antibody) at dilution 1/40, treated with synthetic peptide. (Original magnification: ×200)